



botanical attributes from disturbances. No new roads are permitted in these areas, and new trails are not constructed, unless they are needed for interpretive or educational purposes or to correct resource damage currently occurring.

Management Area Goals and Objectives

Biological Elements -- Flora

Forest Communities

3.1-201. *Maintain or enhance the botanical features of these areas. Monitor to determine if botanical features are being maintained. **OBJECTIVE**

Management Area Standards and Guidelines

General

3.1-1001. *Protect the unique biological, geological, historical, paleontological, or additional botanical values that may continue to be discovered, along with the botanical values for which the botanical area was designated. No new mineral material permits will be issued for this area. **STANDARD**

Physical Elements

Minerals

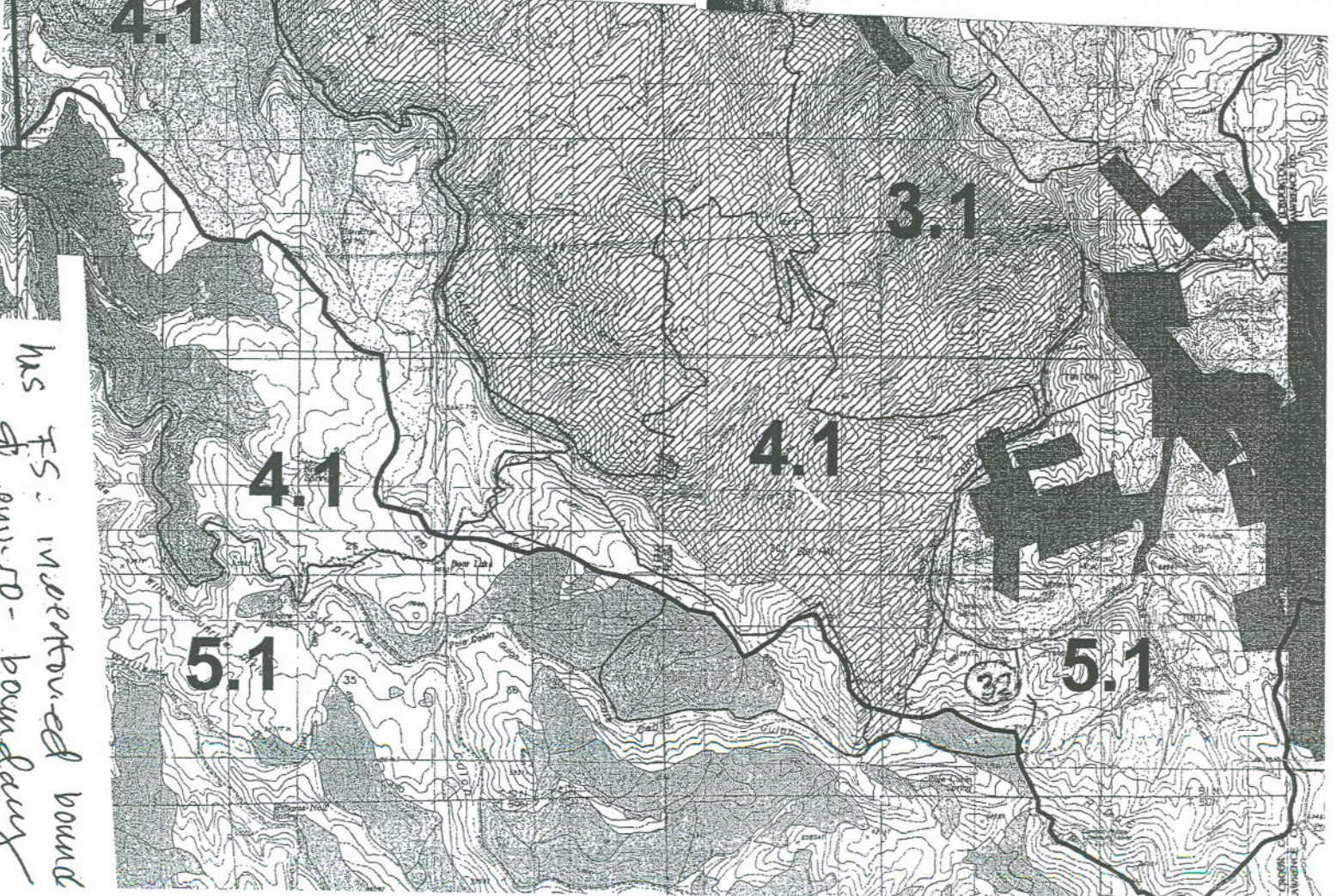
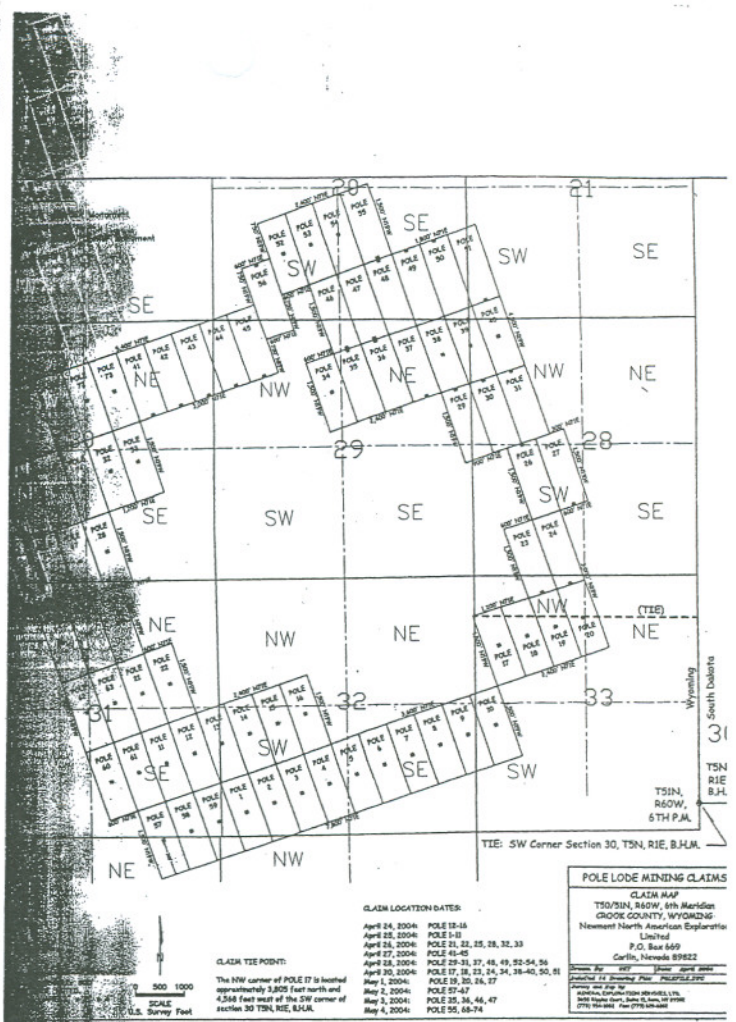
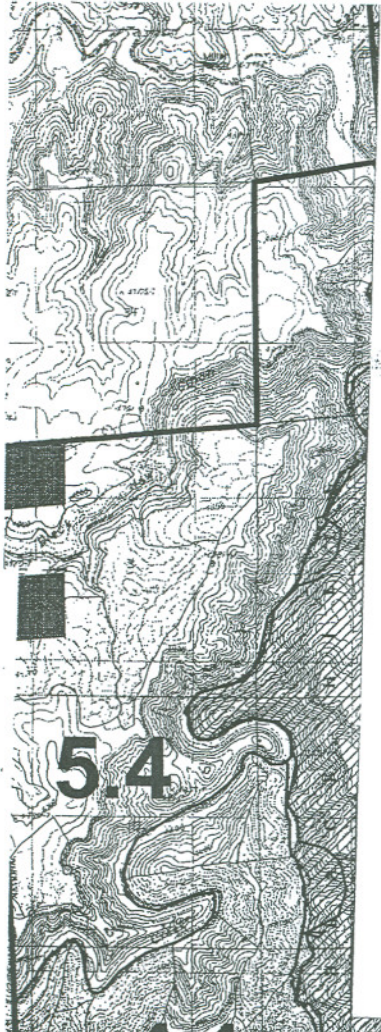
3.1-1501. Withdraw this area from mineral entry in conformance with Section 204 of the Federal Land Policy and Management Act of 1976 (PL 94-579) when withdrawal is necessary to protect the values for which the botanical area was designated. **STANDARD**

Biological Elements -- Flora

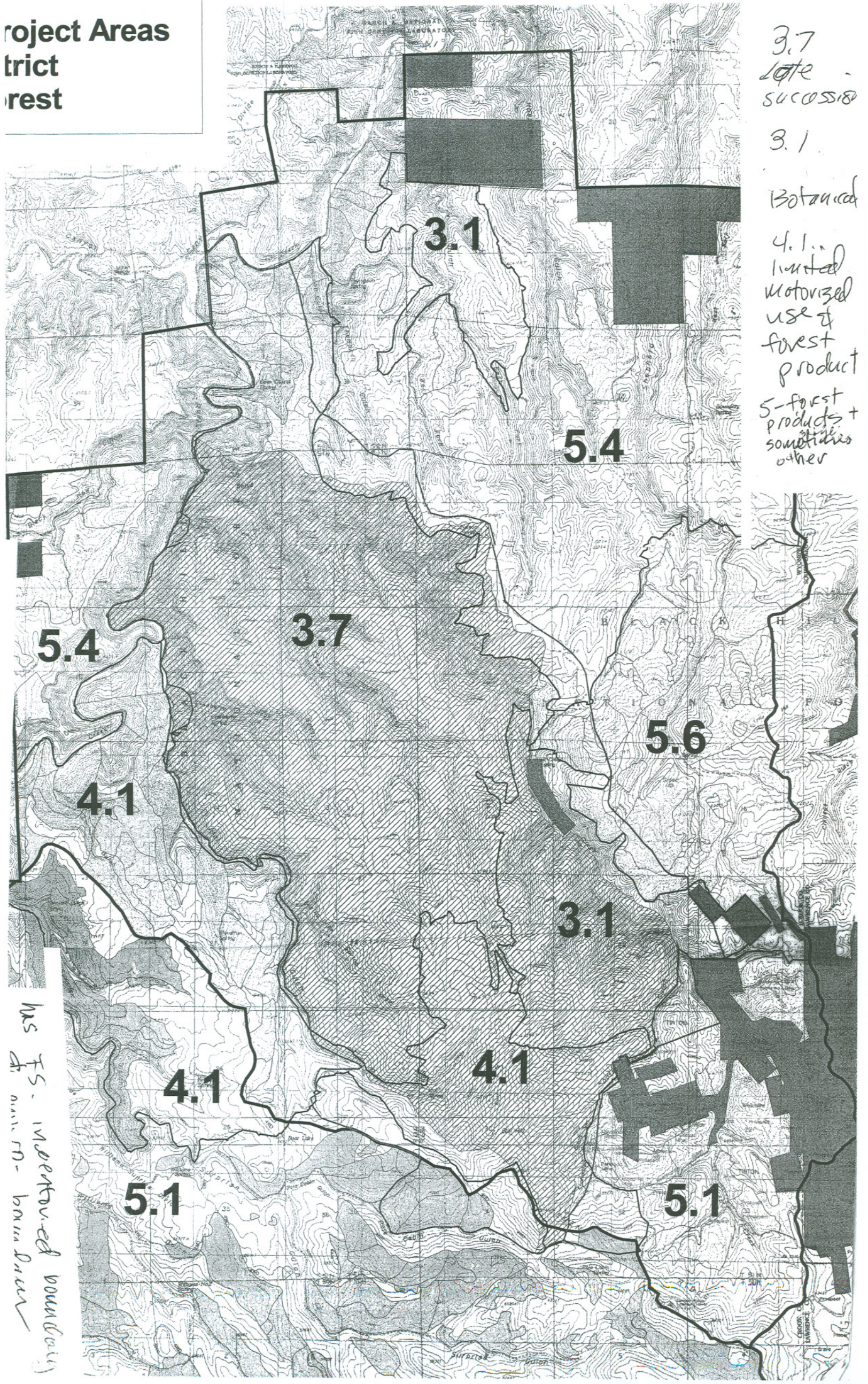
Forest Communities

3.1-2101. Allow logging and wood gathering activities only when necessary to maintain, restore or enhance values for which the botanical area was designated. **STANDARD**

3.1-2102. Tentatively suitable lands within these areas do not contribute to the allowable sale quantity and are not part of the suitable timber land base. **STANDARD**



Project Areas
Tract
rest



3.7
 late
 succession

3.1
 Botanical

4.1
 limited
 motorized
 use of
 forest
 product

5 - forest
 products +
 sometimes
 other

has its interpreted boundary
 as a main boundary