

ATTACHMENT D5-2

Locations, Total Depths, and Completion Dates of Historical Drill Holes (Table and Plates)

Attachment D5-2 Locations, Total Depths, and Completion Dates of Historical Drill Holes

HOLE ID	S	T	R	N	E	ELEV	TD	Year Drilled	HOLE ID's
1-13	13	25	93	534951	733076	6970	1000	1971	001-132593
1D-17	17	25	92	536222	745837	6965	502	1982	001D-172592
1D-18	18	25	92	535517	742596	6943	590	1982	001D-182592
1D-20	20	25	92	534519	745048	6933	530	1982	001D-202592
1M-17	17	25	92	536223	745813	6964	467	1982	001M-172592
1M-18	18	25	92	535515	742623	6943	450	1982	001M-182592
1M-19	19	25	92	534474	742623	6922	450	1982	001M-192592
1M-20	20	25	92	534520	745023	6933	440	1982	001M-202592
1S-17	17	25	92	536224	745785	6964	200	1982	001S-172592
1S-18	18	25	92	535513	742648	6943	357	1982	001S-182592
1S-20	20	25	92	534521	744998	6932	300	1982	001S-202592
2M	19	25	92	534500	742623	6923	680	1982	002M-192592
3M	19	25	92	534524	742622	6924	461	1982	003M-192592
4-1	13	25	93	534980	734943	6964	800	1972	004-01-132593
13-1	13	25	93	536446	734357	7003	800	1974	013-01-132593
13-2	13	25	93	536421	734954	7002	800	1974	013-02-132593
13-3	13	25	93	536449	735541	7002	800	1974	013-03-132593
13-4	13	25	93	536405	736285	6993	800	1974	013-04-132593
19-1	19	25	92	533679	738419	6925	800	1974	019-01-192592
24-1	24	25	93	534247	735799	6966	800	1974	024-01-242593
24-2	24	25	93	534253	736245	6949	800	1974	024-02-242593
24-3	24	25	93	534245	736669	6945	800	1974	024-03-242593
24-4	24	25	93	533467	734432	6941	800	1974	024-04-242593
24-5	24	25	93	533468	735004	6952	802	1974	024-05-242593
24-6	24	25	93	533452	735561	6943	800	1974	024-06-242593
24-7	24	25	93	533684	737018	6929	805	1974	024-07-242593
24-8	24	25	93	533689	737759	6929	802	1974	024-08-242593
24-9	24	25	93	534256	736148	6952	640	1974	024-09-242593
24-10	24	25	93	534252	736341	6947	671	1974	024-10-242593
50-1	23	25	93	533461	732899	6938	500	1968	050-01-232593
59-1	18	25	92	538215	740618	6969	300	1969	059-01-182592
72-1	19	25	92	534585	740732	6930	800	1972	072-01-192592
77-1	19	25	92	532792	740694	6918	790	1969	077-01-192592
81-1	24	25	93	534808	736051	6969	800	1973	081-01-242593
81-2	24	25	93	533491	735981	6936	795	1973	081-02-242593
82-1	24	25	93	532333	736092	6916	731	1969	082-01-242593
82-2	24	25	93	532327	736037	6916	795	1969	082-02-242593
82-3	24	25	93	532538	736088	6918	1214	1969	082-03-242593
83-1	24	25	93	533493	736182	6932	800	1969	083-01-242593
83-2	24	25	93	533615	736231	6934	600	1969	083-02-242593
83-3	24	25	93	534581	736243	6961	650	1969	083-03-242593
83-4	24	25	93	534816	736250	6968	1200	1969	083-04-242593
83-5	24	25	93	533805	736176	6940	800	1969	083-05-242593
84-1	24	25	93	533293	736188	6929	800	1969	084-01-242593
85-1	13	25	93	537469	736144	7020	600	1969	085-01-132593
86-1	13	25	93	534906	736097	6970	703	1969	086-01-132593
86-2	13	25	93	534907	736146	6970	800	1969	086-02-132593
86-3	13	25	93	534908	736051	6968	800	1969	086-03-132593
86-4	13	25	93	536382	735849	6997	800	1969	086-04-132593
86-5	13	25	93	535014	736045	6971	960	1969	086-05-132593
88-1	13	25	93	535024	736449	6967	600	1969	088-01-132593
88-2	13	25	93	535020	736245	6969	800	1969	088-02-132593
120-1	13	25	93	538676	737835	7028	440	1971	120-01-132593
131-1	13	25	93	535187	737668	6960	800	1972	131-01-132593
131-2	13	25	93	534915	736348	6970	760	1972	131-02-132593
131-3	13	25	93	534914	736438	6968	600	1972	131-03-132593
131-4	13	25	93	535025	736449	6969	1200	1973	131-04-132593
131-5	24	25	93	534819	736450	6965	800	1973	131-05-242593
135-1	24	25	93	533499	736381	6932	1200	1973	135-01-242593
139-1	24	25	93	532766	736917	6920	780	1973	139-01-242593
139-2	24	24	93	532788	737205	6920	1200	1973	139-02-242593

Attachment D5-2 Locations, Total Depths, and Completion Dates of Historical Drill Holes

HOLE ID	S	T	R	N	E	ELEV	TD	Year Drilled	HOLE ID's
139-3	24	24	93	532788	737457	6916	800	1973	139-03-242593
140-1	19	25	92	532787	737743	6910	760	1969	140-01-192592
140-2	19	25	92	532786	739205	6915	800	1972	140-02-192592
140-3	19	25	92	532780	738903	6914	1200	1973	140-03-192592
557	17	25	92	537802	743507	6985	650	1969	557-172592
558	18	25	92	535102	743484	6944	650	1969	558-182592
844	20	25	92	531016	743890	6864	560	1969	844-202592
A13	36	25	93	524354	738350	6790	600	1970	A013-362593
A23	17	25	92	536149	745000	6955	700	1970	A023-172592
A39	36	25	93	524338	733142	6800	650	1970	A039-362593
A66	18	25	92	536785	742315	6945	360	1970	A066-182592
A67	18	25	92	539193	742196	7010	740	1970	A067-182592
A176	18	25	92	537740	742658	6975	500	1970	A176-182592
A177	17	25	92	537759	744371	6980	500	1970	A177-172592
A178	17	25	92	535346	745007	6950	500	1970	A178-172592
A179	17	25	92	535746	745004	6960	500	1970	A179-172592
A180	16	25	92	537777	749575	6995	620	1970	A180-162592
A181	17	25	92	535545	745008	6955	520	1970	A181-172592
A185	20	25	92	534555	745028	6939	500	1970	A185-202592
A186	16	25	92	537619	748849	6995	620	1970	A186-162592
A187	20	25	92	534155	745030	6935	500	1970	A187-202592
A188	20	25	92	534356	745030	6935	500	1970	A188-202592
A189	17	25	92	537703	748058	6995	620	1970	A189-172592
A190	20	25	92	534740	745025	6935	500	1970	A190-202592
A191	17	25	92	537647	747276	6985	690	1970	A191-172592
A196	17	25	92	537694	746475	6980	640	1970	A196-172592
A228	17	25	92	537790	745519	6983	700	1970	A228-172592
A399	17	25	92	537664	746839	6990	520	1970	A399-172592
A400	17	25	92	537801	743889	6980	580	1970	A400-172592
A426	18	25	92	537766	743062	6980	600	1970	A426-182592
A442	17	25	92	537704	744721	6985	600	1970	A442-172592
A443	17	25	92	537659	746654	6990	520	1970	A443-172592
B33	36	25	93	524383	735795	6800	700	1972	B033-362593
CG2-1	16	25	92	539699	749994	7034	660	1992	CG2-1-162592
D19	17	25	92	539152	748419	7015	600	1973	D019-172592
D21	17	25	92	536780	746085	6960	700	1973	D021-172592
D22	18	25	92	535655	742118	6942	640	1973	D022-182592
D23	19	25	92	533160	742140	6910	560	1973	D023-192592
D49	20	25	92	534410	744485	6920	660	1970	D049-202592
D50	19	25	92	534355	742139	6921	600	1973	D050-192592
D51	19	25	92	532182	742148	6895	780	1973	D051-192592
D52	19	25	92	533146	743295	6905	540	1973	D052-192592
D53	17	25	92	539180	744778	7010	600	1973	D053-172592
D54	17	25	92	539180	747227	7010	600	1973	D054-172592
D55	17	25	92	536780	747259	6980	780	1973	D055-172592
D75	17	25	92	536780	744862	6960	600	1977	D075-172592
D76	20	25	92	534378	746885	6950	600	1977	D076-202592
D96	20	25	92	534408	745690	6935	540	1970	D096-202592
D131	20	25	92	534395	746078	6942	520	1973	D131-202592
D132	18	25	92	535850	742138	6940	640	1973	D132-182592
D144	18	25	92	535750	742129	6943	540	1973	D144-182592
D149	20	25	92	534412	745368	6935	540	1973	D149-202592
D150	20	25	92	534400	745875	6937	540	1973	D150-202592
D156	20	25	92	534420	745266	6935	540	1973	D156-202592
LC1W	24	25	93	534754	735284	6963	380	2005	LC001W
LC2	19	25	92	534705	741758	6930	800	2005	LC002
LC3	19	25	92	534630	742090	6923	800	2005	LC003
LC4	20	25	92	534908	743606	6940	800	2005	LC004
LC5C	19	25	92	534824	743398	6942	800	2005	LC005C
LC6C	19	25	92	534800	742606	6930	800	2005	LC006C
LC7C	19	25	92	534756	741947	6932	800	2005	LC007C

Attachment D5-2 Locations, Total Depths, and Completion Dates of Historical Drill Holes

HOLE ID	S	T	R	N	E	ELEV	TD	Year Drilled	HOLE ID's
LC8C	18	25	92	535399	743396	6943	800	2005	LC008C
LC9C	18	25	92	535206	743001	6934	800	2005	LC009C
LC10A	18	25	92	535299	743396	6950	240	2005	LC010A
LC10C	18	25	92	535304	743400	6950	800	2005	LC010C
LC11C	20	25	92	534805	745000	6933	800	2005	LC011C
LC12C	20	25	92	534813	744601	6935	800	2005	LC012C
LC13C	17	25	92	535400	743710	6948	800	2006	LC013C
LC14A	20	25	92	534805	744100	6933	200	2006	LC014A
LC15M	20	25	92	534823	744547	6935	350	2006	LC015M
LC16M	20	25	92	534821	744563	6935	472	2006	LC016M
LC17M	20	25	92	534840	744562	6935	575	2006	LC017M
LC18M	18	25	92	535319	743362	6949	350	2006	LC018M
LC19M	18	25	92	535318	743378	6949	463	2006	LC019M
LC20M	18	25	92	535332	743377	6949	543	2006	LC020M
LC21M	24	25	93	532851	736277	6925	410	2006	LC021M
LC22M	24	25	93	532851	736292	6925	592	2006	LC022M
LC23M	24	25	93	532835	736293	6924	634	2006	LC023M
LC24M	17	25	92	535203	744579	6943	542	2006	LC024M
LC25M	19	25	92	534620	743406	6935	380	2006	LC025M
LC26M	20	25	92	534833	748204	6953	436	2006	LC026M
LC27M	16	25	92	539018	753260	7010	477	2006	LC027M
LC28M	25	25	92	524437	733364	6804	563	2006	LC028M
LC29M	20	25	92	534837	744548	6935	171	2006	LC029M
LC30M	24	25	92	532836	736277	6925	236	2006	LC030M
LC31M	25	25	92	524434	733380	6803	191	2006	LC031M
LC32W	17	25	92	536806	747065	6987	900	2007	LC032W
LC33W	20	25	92	534313	748167	6944	1000	2007	LC033W
LC34	17	25	92	535700	744400	6954	866	2007	LC034
LC35	17	25	92	535700	744600	6953	650	2007	LC035
LC36	17	25	92	535600	744900	6959	866	2007	LC036
LC37	17	25	92	535550	745020	6957	750	2007	LC037
LC38	17	25	92	535500	744800	6954	750	2007	LC038
LC39	17	25	92	535500	744400	6948	752	2007	LC039
LC40	17	25	92	535550	744300	6951	760	2007	LC040
LC41	17	25	92	535400	744300	6944	850	2007	LC041
LC42	17	25	92	535500	744100	6951	862	2007	LC042
LC43	17	25	92	535400	744100	6947	860	2007	LC043
LC44	17	25	92	535300	744000	6944	706	2007	LC044
LC45	17	25	92	535300	743900	6946	867	2007	LC045
LC46	17	25	92	535200	743900	6942	867	2007	LC046
LC47	20	25	92	535100	743800	6941	866	2007	LC047
LC48	20	25	92	535025	743716	6943	765	2007	LC048
LC49	20	25	92	535002	743888	6942	766	2007	LC049
LC50	20	25	92	535100	743993	6942	784	2007	LC050
LC51	20	25	92	534900	744000	6938	604	2007	LC051
LC52	20	25	92	534800	743900	6990	604	2007	LC052
LC53	20	25	92	534746	743986	6988	804	2007	LC053
LC54	20	25	92	534831	744084	6935	604	2007	LC054
LC55	20	25	92	534900	744200	6938	604	2007	LC055
LC56	20	25	92	535000	744300	6991	604	2007	LC056
LC57	20	25	92	535100	744300	6940	764	2007	LC057
LC58	20	25	92	535200	744300	6941	750	2007	LC058
LC59	20	25	92	535300	744400	6941	750	2007	LC059
LC60	20	25	92	535160	744500	6941	704	2007	LC060
LC60C	20	25	92	534833	743909	6990	764	2007	LC060C
LC61	20	25	92	535100	744600	6993	764	2007	LC061
LC62	20	25	92	535130	744800	6942	750	2007	LC062
LC63	20	25	92	535700	745400	6959	750	2007	LC063
LC64	20	25	92	535700	745800	6959	804	2007	LC064
LC67	17	25	92	536060	747093	6967	865	2007	LC067
LC69	17	25	92	536420	747079	6979	840	2007	LC069

Attachment D5-2 Locations, Total Depths, and Completion Dates of Historical Drill Holes

HOLE ID	S	T	R	N	E	ELEV	TD	Year Drilled	HOLE ID's
LC70	20	25	92	534534	748147	6948	850	2007	LC070
LC71	20	25	92	534422	748158	6945	860	2007	LC071
LC72	20	25	92	534202	748180	6943	860	2007	LC072
LC73	20	25	92	534524	748353	6946	860	2007	LC073
LC75	19	25	92	531498	742486	6932	850	2007	LC075
LC76	19	25	92	531683	742367	6934	850	2007	LC076
LC80	18	25	92	537597	739884	7034	920	2007	LC080
LC81	18	25	92	537602	740036	7034	1000	2007	LC081
LC82	18	25	92	537466	739726	7032	850	2007	LC082
LC85	20	25	92	534600	745000	6993	840	2007	LC085
LC86	20	25	92	534400	745000	6990	840	2007	LC086
LC87	20	25	92	534300	745000	6990	840	2007	LC087
LC88	20	25	92	534700	745700	6994	600	2007	LC088
LC89	20	25	92	534600	745700	6993	600	2007	LC089
LC90	20	25	92	534500	745700	6992	605	2007	LC090
LC91	20	25	92	534700	745600	6995	605	2007	LC091
LC92	20	25	92	534500	745600	6991	605	2007	LC092
LC93	20	25	92	534400	745600	6991	605	2007	LC093
LC94	20	25	92	534700	745500	6994	605	2007	LC094
LC95	20	25	92	534600	745500	6993	605	2007	LC095
LC96	20	25	92	534500	745500	6992	605	2007	LC096
LC97	20	25	92	534400	745500	6991	605	2007	LC097
LC98	20	25	92	534300	745500	6990	605	2007	LC098
LC99	20	25	92	534700	745400	6994	605	2007	LC099
LC100	20	25	92	534500	745400	6992	850	2007	LC100
LC101	20	25	92	534300	745400	6989	850	2007	LC101
LC102	20	25	92	534800	745300	6996	850	2007	LC102
LC103	20	25	92	534700	745300	6995	850	2007	LC103
LC104	20	25	92	534600	745300	6992	850	2007	LC104
LC105	20	25	92	534500	745300	6992	850	2007	LC105
LC106	20	25	92	534400	745300	6991	850	2007	LC106
LC107	20	25	92	534300	745300	6990	850	2007	LC107
LC108	20	25	92	534900	745200	6994	850	2007	LC108
LC109	20	25	92	534700	745200	6996	850	2007	LC109
LC110	20	25	92	534500	745199	6992	850	2007	LC110
LC111	20	25	92	534400	745200	6991	850	2007	LC111
LC112	20	25	92	534300	745200	6991	850	2007	LC112
LC113	20	25	92	534900	745100	6991	850	2007	LC113
LC114	20	25	92	534800	745100	6993	850	2007	LC114
LC115	20	25	92	534700	745100	6994	850	2007	LC115
LC116	20	25	92	534600	745100	6995	850	2007	LC116
LC117	20	25	92	534500	745100	6992	850	2007	LC117
LC118	20	25	92	534400	745100	6991	850	2007	LC118
LC119	20	25	92	534300	745100	6989	850	2007	LC119
LC120	20	25	92	534900	745000	6991	850	2007	LC120
LC121	20	25	92	534900	744900	6991	850	2007	LC121
LC122	20	25	92	534800	744900	6989	850	2007	LC122
LC123	20	25	92	534700	744900	6988	850	2007	LC123
LC124	20	25	92	534600	744900	6990	850	2007	LC124
LC125	20	25	92	534500	744900	6990	850	2007	LC125
LC126	20	25	92	534400	744900	6991	850	2007	LC126
LC127	20	25	92	534300	744900	6989	850	2007	LC127
LC128	20	25	92	534900	744800	6990	850	2007	LC128
LC129	20	25	92	534700	744800	6987	850	2007	LC129
LC131	20	25	92	534200	745400	6989	850	2007	LC131
LC132	20	25	92	534200	745200	6990	850	2007	LC132
LC133	20	25	92	534627	744696	6984	850	2007	LC133
LC137	20	25	92	534900	743800	6991	850	2007	LC137
LC139	20	25	92	534900	743900	6991	850	2007	LC139
LC143	20	25	92	534700	744100	6987	850	2007	LC143
LC144	20	25	92	534600	744100	6985	850	2007	LC144

Attachment D5-2 Locations, Total Depths, and Completion Dates of Historical Drill Holes

HOLE ID	S	T	R	N	E	ELEV	TD	Year Drilled	HOLE ID's
LC145	20	25	92	534700	743700	6988	850	2007	LC145
LC146	20	25	92	534600	743700	6986	850	2007	LC146
LC147	20	25	92	534900	744300	6989	850	2007	LC147
LC148	20	25	92	534700	744300	6987	850	2007	LC148
LC149	20	25	92	534600	744300	6985	850	2007	LC149
LC150	20	25	92	534500	744300	6984	850	2007	LC150
LC151	19	25	92	534710	743479	6986	850	2007	LC151
LC152	20	25	92	534900	744400	6988	850	2007	LC152
LC153	20	25	92	534500	744400	6982	850	2007	LC153
LC155	20	25	92	535000	744500	6990	850	2007	LC155
LC156	20	25	92	534900	744500	6988	850	2007	LC156
LC157	20	25	92	534800	744500	6987	850	2007	LC157
LC158	20	25	92	534699	744486	6984	850	2007	LC158
LC159	20	25	92	534601	744498	6983	850	2007	LC159
LC160	20	25	92	534495	744501	6982	850	2007	LC160
LC161	20	25	92	534506	744601	6983	850	2007	LC161
LC162	20	25	92	535000	744700	6990	850	2007	LC162
LC163	20	25	92	534900	744700	6989	850	2007	LC163
LC164	20	25	92	534800	744700	6988	850	2007	LC164
LC165	20	25	92	534700	744700	6986	850	2007	LC165
LC167	20	25	92	534500	744700	6987	850	2007	LC167
LC168	20	25	92	535000	744900	6992	850	2007	LC168
LC169	17	25	92	535200	745000	6997	850	2007	LC169
LC170	20	25	92	535100	745000	6994	850	2007	LC170
LC171	17	25	92	535200	745200	6995	850	2007	LC171
LC172	20	25	92	535100	745200	6994	850	2007	LC172
LC173	17	25	92	535200	745400	6997	850	2007	LC173
LC174	20	25	92	535100	745400	6997	850	2007	LC174
LC175	20	25	92	535000	745600	6998	850	2007	LC175
LC176	20	25	92	535000	745700	6999	850	2007	LC176
LC177	20	25	92	535100	745800	7001	850	2007	LC177
LC178	20	25	92	534700	745800	6994	850	2007	LC178
LC179	20	25	92	534500	745800	6992	850	2007	LC179
LC180	20	25	92	534400	745800	6994	850	2007	LC180
LC-HJMO101	19	25	92	534988	743281	6952	326	2007	LC-HJMO-101
LC-HJMO102	19	25	92	534762	742550	6987	330	2007	LC-HJMO-102
LC-HJMO103	18	25	92	535101	742646	6939	330	2007	LC-HJMO-103
LC-HJMO104	19	25	92	534899	742898	6946	328	2007	LC-HJMO-104
LC-HJMO105	19	25	92	535074	742953	6944	328	2007	LC-HJMO-105
LC-HJMO106	18	25	92	535258	743169	6995	328	2007	LC-HJMO-106
LC-HJMO107	20	25	92	534790	743697	6990	370	2007	LC-HJMO-107
LC-HJMO108	18	25	92	535298	743461	6954	333	2007	LC-HJMO-108
LC-HJMO109	20	25	92	534825	743904	6991	379	2007	LC-HJMO-109
LC-HJMO110	17	25	92	535194	743674	6950	330	2007	LC-HJMO-110
LC-HJMO111	17	25	92	535371	743825	6953	330	2007	LC-HJMO-111
LC-HJMO112	20	25	92	534674	744375	6931	350	2007	LC-HJMO-112
LC-HJMO113	20	25	92	534805	744265	6934	362	2007	LC-HJMO-113
LC-HJMO114	20	25	92	534676	744979	6938	360	2007	LC-HJMO-114
LC-HJMP101	19	25	92	534998	743287	6951	490	2007	LC-HJMP-101
LC-HJMP102	19	25	92	534755	742559	6939	440	2007	LC-HJMP-102
LC-HJMP103	18	25	92	535109	742652	6939	432	2007	LC-HJMP-103
LC-HJMP104	19	25	92	534897	742885	6943	430	2007	LC-HJMP-104
LC-HJMP106	18	25	92	535258	743168	6945	480	2007	LC-HJMP-106
LC-HJMP107	20	25	92	534802	743684	6941	464	2007	LC-HJMP-107
LC-HJMP108	18	25	92	535311	743466	6955	436	2007	LC-HJMP-108
LC-HJMP109	20	25	92	534830	743895	6991	512	2007	LC-HJMP-109
LC-HJMP110	17	25	92	535184	743682	6950	476	2007	LC-HJMP-110
LC-HJMP111	17	25	92	535366	743835	6952	440	2007	LC-HJMP-111
LC-HJMP112	20	25	92	534668	744385	6931	400	2007	LC-HJMP-112
LC-HJMP113	20	25	92	534797	744273	6934	462	2007	LC-HJMP-113
LC-HJMP114	20	25	92	534687	744976	6938	460	2007	LC-HJMP-114

Attachment D5-2 Locations, Total Depths, and Completion Dates of Historical Drill Holes

HOLE ID	S	T	R	N	E	ELEV	TD	Year Drilled	HOLE ID's
LC-HJMU101	19	25	92	534997	743277	6951	535	2007	LC-HJMU-101
LC-HJMU102	19	25	92	534748	742547	6987	600	2007	LC-HJMU-102
LC-HJMU103	18	25	92	535098	742657	6938	850	2007	LC-HJMU-103
LC-HJMU104	19	25	92	534907	742891	6946	550	2007	LC-HJMU-104
LC-HJMU105	19	25	92	535076	742942	6944	548	2007	LC-HJMU-105
LC-HJMU106	18	25	92	535258	743159	6944	547	2007	LC-HJMU-106
LC-HJMU107	20	25	92	534788	743686	6990	855	2007	LC-HJMU-107
LC-HJMU108	18	25	92	535299	743476	6954	850	2007	LC-HJMU-108
LC-HJMU109	20	25	92	534835	743904	6992	850	2007	LC-HJMU-109
LC-HJMU110	17	25	92	535195	743685	6954	850	2007	LC-HJMU-110
LC-HJMU111	17	25	92	535375	743841	6952	853	2007	LC-HJMU-111
LC-HJMU112	20	25	92	534675	744386	6931	802	2007	LC-HJMU-112
LC-HJMU113	20	25	92	534807	744277	6934	800	2007	LC-HJMU-113
LC-HJMU114	20	25	92	534678	744966	6937	557	2007	LC-HJMU-114
LC-HJT101	19	25	92	534610	742561	6993	478	2007	LC-HJT-101
LC-HJT102	19	25	92	534696	742886	6942	430	2007	LC-HJT-102
LC-HJT103	19	25	92	534670	743180	6944	430	2007	LC-HJT103
LC-HJT104	20	25	92	534892	743653	6942	460	2007	LC-HJT-104
LC-HJT105	20	25	92	535027	744437	6941	850	2007	LC-HJT-105
LC-HJT106	20	25	92	534493	743890	6934	850	2007	LC-HJT-106
LC-HJT107	20	25	92	534830	745230	6995	850	2007	LC-HJT-107
LC-UKMO101	20	25	92	534943	744085	6939	487	2007	LC-UKMO-101
LC-UKMO102	17	25	92	535134	744206	6947	420	2007	LC-UKMO-102
LC-UKMO103	17	25	92	535556	744501	6953	438	2007	LC-UKMO-103
LC-UKMP101	20	25	92	534929	744090	6939	575	2007	LC-UKMP-101
LC-UKMP102	17	25	92	535145	744204	6947	498	2007	LC-UKMP-102
LC-UKMP103	17	25	92	535558	744487	6953	537	2007	LC-UKMP-103
LC-UKMU101	20	25	92	534931	744101	6939	850	2007	LC-UKMU-101
LC-UKMU102	17	25	92	535143	744191	6945	580	2007	LC-UKMU-102
LC-UKMU103	17	25	92	535546	744487	6953	850	2007	LC-UKMU-103
OH1	16	25	92	537410	750061	6991	323	1968	OH-1-162592
P1-16	16	25	92	535240	749380	6945	680	1988	P01-162592
P1-17	17	25	92	535964	745571	6961	500	1987	P01-172592
P1-18	18	25	92	535288	743252	6939	560	1987	P01-182592
P1-19	19	25	92	533745	738394	6934	560	1987	P01-192592
P1-20	20	25	92	534558	744585	6927	560	1987	P01-202592
P1-24	24	25	93	533000	737450	6917	600	1987	P01-242593
P2-16	16	25	92	535655	749388	6942	600	1988	P02-162592
P2-17	17	25	92	535730	744805	6949	660	1988	P02-172592
P2-18	18	25	92	535253	743395	6949	500	1990	P02-182592
P2-19	19	25	92	533240	738578	6920	720	1988	P02-192592
P2-20	20	25	92	534620	745600	6935	560	1987	P02-202592
P2-24	24	25	93	532873	735930	6925	560	1987	P02-242593
P3-17	17	25	92	535198	746590	6946	640	1988	P03-172592
P3-18	18	25	92	535337	743382	6944	500	1990	P03-182592
P3-19	19	25	92	535052	742605	6931	500	1992	P03-192592
P3-20	20	25	92	534713	744606	6934	520	1990	P03-202592
P3-24	24	25	93	532378	734386	6920	730	1988	P03-242593
P4-17	17	25	92	536000	746000	6964	633	1988	P04-172592
P4-18	18	25	92	535436	743373	6942	500	1990	P04-182592
P4-19	19	25	92	534927	742602	6929	500	1992	P04-192592
P4-20	20	25	92	534762	744606	6934	520	1990	P04-202592
P5-17	17	25	92	535550	744644	6945	650	1988	P05-172592
P5-18	18	25	92	535487	743369	6940	500	1990	P05-182592
P5-19	19	25	92	534751	742593	6933	500	1992	P05-192592
P5-20	20	25	92	534862	744608	6936	520	1990	P05-202592
P6-17	17	25	92	535304	743799	6946	500	1990	P06-172592
P6-18	18	25	92	535151	742602	6935	500	1992	P06-182592
P6-19	19	25	92	534654	742596	6933	500	1992	P06-192592
P6-20	20	25	92	534913	744610	6937	520	1990	P06-202592
P7-17	17	25	92	535354	743798	6948	500	1990	P07-172592

Attachment D5-2 Locations, Total Depths, and Completion Dates of Historical Drill Holes

HOLE ID	S	T	R	N	E	ELEV	TD	Year Drilled	HOLE ID's
P7-19	19	25	92	535096	742805	6933	500	1990	P07-192592
P7-20	20	25	92	534947	744605	6935	520	1990	P07-202592
P8-17	17	25	92	535503	743795	6953	500	1990	P08-172592
P8-19	19	25	92	534897	742798	6936	500	1992	P08-192592
P9-17	17	25	92	535300	743592	6947	500	1990	P09-172592
P10-17	17	25	92	535502	743603	6950	500	1968	P10-172592
RD34	16	25	92	537786	751305	6972	840	1968	RD034-162592
RD106	9	25	92	540450	748750	7050	1200	1967	RD106-092592
RD107	9	25	92	540437	751330	7040	800	1967	RD107-092592
RD108	10	25	92	540450	753950	7020	800	1967	RD108-102592
RD125	21	25	92	535200	751500	6955	480	1967	RD125-212592
RD130	16	25	92	540450	751700	7035	850	1967	RD130-162592
RD131	16	25	92	539200	751500	7005	900	1968	RD131-162592
RD150	9	25	92	540450	751150	7040	800	1968	RD150-092592
RD187	20	25	92	533437	744882	6931	774	1968	RD187-202592
RD188	17	25	92	535332	747248	6950	800	1968	RD188-172592
RD189	16	25	92	536725	749225	6975	800	1968	RD189-162592
RD210	16	25	92	535697	753550	6980	600	1968	RD210-162592
RD211	15	25	92	535191	753949	6964	570	1968	RD211-152592
RD301	16	25	92	535780	750500	6945	600	1968	RD301-162592
RD310	20	25	92	533520	748578	6929	550	1968	RD310-202592
RD343	20	25	92	533941	746072	6947	650	1968	RD343-202592
RD345	17	25	92	535299	745779	6950	791	1968	RD345-172592
RD392	16	25	92	535172	750066	6940	600	1968	RD392-162592
RD393	16	25	92	535810	753180	6963	200	1968	RD393-162592
RD396	20	25	92	532266	744003	6899	640	1968	RD396-202592
RD404	16	25	92	537535	750145	6985	550	1968	RD404-162592
RD412	17	25	92	538050	746040	6997	700	1968	RD412-172592
RD436	19	25	92	534436	742838	6925	670	1968	RD436-192592
RD445	16	25	92	537751	753179	6987	600	1968	RD445-162592
RD446	16	25	92	539024	748856	7015	800	1968	RD446-162592
S19	26	25	93	526745	733058	6940	515	1968	S19-262593
TE1	24	25	93	532611	736015	6920	680	1977	TE001-242593
TE2	24	25	93	532464	736159	6918	700	1977	TE002-242593
TE3	24	25	93	534251	736293	6946	680	1977	TE003-242593
TE4	24	25	93	534348	736356	6950	680	1977	TE004-242593
TE5	24	25	93	534148	736340	6945	680	1977	TE005-242593
TE6	24	25	93	534853	736198	6969	700	1977	TE006-242593
TE7	24	25	93	534704	736071	6943	700	1977	TE007-242593
TE8	24	25	93	534806	735850	6967	720	1977	TE008-242593
TE9	24	25	93	533428	734213	6939	820	1977	TE009-242593
TE10	24	25	93	533347	734409	6940	820	1977	TE010-242593
TE11	24	25	93	533535	734932	6948	720	1977	TE011-242593
TE12	24	25	93	533392	735080	6949	720	1977	TE012-242593
TE17	24	25	93	534463	736085	6961	1200	1977	TE017-242593
TE18	24	25	93	532773	735925	6923	775	1977	TE018-242593
TE19	24	25	93	532368	736251	6917	700	1977	TE019-242593
TE20	24	25	93	532346	735895	6917	800	1977	TE020-242593
TE21	24	25	93	533264	734028	6936	1200	1977	TE021-242593
TE22	24	25	93	533555	735137	6949	800	1977	TE022-242593
TE23	24	25	93	533224	735180	6945	800	1977	TE023-242593
TE26	24	25	93	534877	734690	6963	600	1977	TE026-242593
TE27	24	25	93	534654	735023	6961	600	1977	TE027-242593
TE28	24	25	93	534441	735444	6963	640	1977	TE028-242593
TE29	24	25	93	533952	735799	6952	620	1977	TE029-242593
TE30	24	25	93	534391	735912	6962	620	1977	TE030-242593
TE31	24	25	93	534858	735315	6962	620	1977	TE031-242593
TE32	13	25	93	535264	735117	6972	700	1977	TE032-132593
TE33	13	25	93	535324	735649	6977	800	1977	TE033-132593
TE34	24	25	93	534803	737380	6964	620	1977	TE034-242593
TE35	24	25	93	534839	734652	6963	620	1977	TE035-242593

Attachment D5-2 Locations, Total Depths, and Completion Dates of Historical Drill Holes

HOLE ID	S	T	R	N	E	ELEV	TD	Year Drilled	HOLE ID's
TE36	24	25	93	534693	735103	6962	620	1977	TE036-242593
TE37	24	25	93	534622	735031	6957	620	1977	TE037-242593
TE38	24	25	93	534757	735323	6961	380	1977	TE038-242593
TE39	24	25	93	534418	735953	6962	620	1977	TE039-242593
TE40	24	25	93	534349	735882	6961	620	1977	TE040-242593
TE41	31	25	93	535016	734539	6970	620	1977	TE041-312593
TE42	24	25	93	534728	734857	6957	620	1977	TE042-242593
TE43	24	25	93	534496	735217	6956	620	1977	TE043-242593
TE44	24	25	93	534529	735751	6963	620	1977	TE044-242593
TE45	24	25	93	534286	736037	6954	620	1977	TE045-242593
TE46	24	25	93	533794	735984	6943	1200	1977	TE046-242593
TE47	24	25	93	533504	735874	6940	760	1977	TE047-242593
TE48	24	25	93	533644	735563	6947	600	1977	TE048-242593
TE49	24	25	93	533656	734818	6938	600	1977	TE049-242593
TE50	24	25	93	533606	734575	6940	800	1977	TE050-242593
TE51	24	25	93	533577	734220	6941	700	1977	TE051-242593
TE52	24	25	93	533363	733504	6936	1200	1977	TE052-242593
TE53	24	25	93	533122	733504	6935	800	1977	TE053-242593
TE54	22	25	93	533165	732894	6931	1200	1977	TE054-222593
TE56	24	25	93	532836	733821	6930	700	1977	TE056-242593
TE57	24	25	93	533203	734299	6938	1200	1977	TE057-242593
TE58	24	25	93	532478	733875	6921	1200	1977	TE058-242593
TE59	24	25	93	532517	734237	6927	700	1977	TE059-242593
TE60	24	25	93	532821	734692	6923	700	1977	TE060-242593
TE61	24	25	93	533017	735043	6941	1200	1977	TE061-242593
TE62	24	25	93	532421	734616	6917	700	1977	TE062-242593
TE63	24	25	93	533099	735337	6936	700	1977	TE063-242593
TE64	24	25	93	532993	735516	6931	680	1977	TE064-242593
TE65	24	25	93	532933	735377	6931	1203	1977	TE065-242593
TE66	24	25	93	532914	735683	6927	700	1977	TE066-242593
TE67	24	25	93	532607	735805	6921	719	1977	TE067-242593
TE68	24	25	93	533128	736061	6928	1202	1977	TE068-242593
TE69	24	25	93	532781	736195	6922	793	1977	TE069-242593
TE70	24	25	93	532541	735889	6919	1202	1977	TE070-242593
TE71	24	25	93	532691	736211	6923	700	1977	TE071-242593
TE72	24	25	93	532792	736105	6924	700	1977	TE072-242593
TE73	24	25	93	532902	736216	6926	700	1977	TE073-242593
TE74	24	25	93	534927	734450	6969	600	1977	TE074-242593
TE75	24	25	93	534827	734335	6968	600	1977	TE075-242593
TE77	24	25	93	533078	733539	6934	640	1977	TE077-242593
TE78	23	25	93	533128	732950	6931	640	1977	TE078-232593
TE79	23	25	93	533601	733396	6939	700	1977	TE079-232593
TE80	24	25	93	533464	733539	6937	680	1977	TE080-242593
TE81	24	25	93	534606	734395	6958	700	1977	TE081-242593
TE83	23	25	93	532752	733541	6928	640	1977	TE083-232593
TE84	24	25	93	533831	734645	6944	600	1977	TE084-242593
TE87	23	25	93	534825	733945	6969	700	1977	TE087-242593
TE88	23	25	93	534011	734536	6948	700	1977	TE088-242593
TE89	24	25	93	532895	736202	6927	660	1977	TE089-242593
TE90	24	25	93	533200	733800	6936	700	1977	TE090-242593
TE91	24	25	93	532599	734797	6916	700	1977	TE091-242593
TE92	24	25	93	532600	734399	6927	700	1977	TE092-242593
TE93	24	25	93	532802	734196	6933	600	1977	TE093-242593
TE94	24	25	93	532999	733800	6931	700	1977	TE094-242593
TE96	24	25	93	532800	735000	6928	700	1977	TE096-242593
TE97	24	25	93	532800	734800	6925	700	1977	TE097-242593
TE101	24	25	93	532600	734600	6919	720	1977	TE101-242593
TG1-17	17	25	92	535200	743600	6944	500	1978	TG01-172592
TG1-18	18	25	92	535000	742400	6929	600	1992	TG01-182592
TG1-19	19	25	92	532400	742400	6908	600	1992	TG01-192592
TG1-20	20	25	92	534800	743600	6936	500	1978	TG01-202592

Attachment D5-2 Locations, Total Depths, and Completion Dates of Historical Drill Holes

HOLE ID	S	T	R	N	E	ELEV	TD	Year Drilled	HOLE ID's
TG1-21	21	25	92	535000	749000	6947	600	1978	TG01-212592
TG1A-19(60deg)	19	25	92	534724	743405	6940	200	1978	TG01A-192592(60deg)
TG1A-19(75deg)	19	25	92	534720	743405	6940	380	1978	TG01A-192592(75deg)
TG1A-20(60deg)	20	25	92	534902	744200	6933	200	1978	TG01A-202592(60deg)
TG1A-20(75deg)	20	25	92	534900	744200	6933	380	1978	TG01A-202592(75deg)
TG2-18	18	25	92	535200	742400	6933	600	1978	TG02-182592
TG2-19	19	25	92	532800	742400	6912	600	1978	TG02-192592
TG2-20	20	25	92	535000	743600	6940	500	1978	TG02-202592
TG2-21	21	25	92	534800	749000	6942	540	1978	TG02-212592
TG3-17	17	25	92	535400	745400	6945	600	1978	TG03-172592
TG3-18	18	25	92	535400	742400	6939	600	1978	TG03-182592
TG3-19	19	25	92	533200	742400	6912	600	1978	TG03-192592
TG3-20	20	25	92	535000	744000	6937	500	1978	TG03-202592
TG3-21	21	25	92	534600	749000	6940	540	1978	TG03-212592
TG4-18	18	25	92	535600	742400	6940	600	1978	TG04-182592
TG4-19	19	25	92	533600	742400	6923	600	1978	TG04-192592
TG4-20	20	25	92	534800	744000	6934	600	1978	TG04-202592
TG4-21	21	25	92	535000	750600	6931	500	1978	TG04-212592
TG5-17	17	25	92	535200	744000	6939	500	1978	TG05-172592
TG5-18	18	25	92	535800	742400	6944	660	1978	TG05-182592
TG5-19	19	25	92	534000	742400	6934	600	1978	TG05-192592
TG5-20	20	25	92	535000	744400	6934	600	1978	TG05-202592
TG5-21	21	25	92	535000	749400	6946	600	1978	TG05-212592
TG6-17	17	25	92	535400	743600	6950	600	1978	TG06-172592
TG6-18	18	25	92	536000	742400	6947	600	1978	TG06-182592
TG6-19	19	25	92	534400	742400	6927	600	1978	TG06-192592
TG6-20	20	25	92	534800	744400	6931	600	1978	TG06-202592
TG6-21	21	25	92	535000	749800	6939	540	1978	TG06-212592
TG7-17	17	25	92	535400	744000	6945	540	1978	TG07-172592
TG7-18	18	25	92	536200	742400	6949	660	1978	TG07-182592
TG7-19	19	25	92	534600	742400	6929	600	1978	TG07-192592
TG7-20	20	25	92	534400	744800	6932	520	1978	TG07-202592
TG8-17	17	25	92	535600	744000	6953	560	1978	TG08-172592
TG8-18	18	25	92	535212	743201	6944	600	1978	TG08-182592
TG8-19	19	25	92	534800	742400	6926	600	1978	TG08-192592
TG8-20	20	25	92	534800	744800	6934	600	1978	TG08-202592
TG9-17	17	25	92	535123	744387	6936	560	1978	TG09-172592
TG9-18	18	25	92	535200	742800	6935	600	1978	TG09-182592
TG9-19	19	25	92	534800	742800	6935	600	1978	TG09-192592
TG9-20	20	25	92	534600	744800	6932	600	1978	TG09-202592
TG10-17	17	25	92	535400	744400	6941	600	1977	TG10-172592
TG10-18	18	25	92	535600	742800	6946	600	1977	TG10-182592
TG10-19	19	25	92	534600	742800	6932	500	1977	TG10-192592
TG10-20	20	25	92	534600	744400	6930	600	1977	TG10-202592
TG11-17	17	25	92	535600	744400	6949	600	1978	TG11-172592
TG11-18	18	25	92	536006	742800	6951	660	1978	TG11-182592
TG11-19	19	25	92	535000	742800	6932	500	1978	TG11-192592
TG11-20	20	25	92	534600	744000	6931	600	1978	TG11-202592
TG12-17	17	25	92	535121	744788	6939	560	1978	TG12-172592
TG12-18	18	25	92	536400	742800	6959	660	1978	TG12-182592
TG12-19	19	25	92	535000	743200	6942	500	1978	TG12-192592
TG12-20	20	25	92	535000	745000	6938	600	1978	TG12-202592
TG12-21	21	25	92	535000	751000	6948	500	1978	TG12-212592
TG13-17	17	25	92	535400	744800	6949	600	1978	TG13-172592
TG13-18	18	25	92	535200	742900	6936	500	1978	TG13-182592
TG13-19	19	25	92	534600	743200	6932	540	1978	TG13-192592
TG13-20	20	25	92	535000	745400	6942	600	1978	TG13-202592
TG13-21	21	25	92	535000	750200	6935	540	1978	TG13-212592
TG14-18	18	25	92	536400	743200	6949	600	1978	TG14-182592
TG14-19	19	25	92	534800	743200	6941	500	1978	TG14-192592
TG14-20	20	25	92	534800	745400	6941	540	1978	TG14-202592

Attachment D5-2 Locations, Total Depths, and Completion Dates of Historical Drill Holes

HOLE ID	S	T	R	N	E	ELEV	TD	Year Drilled	HOLE ID's
TG15-17	17	25	92	535800	745400	6961	600	1978	TG15-172592
TG15-18	18	25	92	535414	743205	6943	500	1978	TG15-182592
TG15-19	19	25	92	534600	742600	6930	580	1980	TG15-192592
TG15-20	20	25	92	534600	745400	6938	540	1978	TG15-202592
TG16-17	17	25	92	535800	745800	6961	600	1978	TG16-172592
TG16-19	19	25	92	534800	742600	6930	580	1980	TG16-192592
TG16-20	20	25	92	534600	745800	6938	600	1978	TG16-202592
TG17-17	17	25	92	535400	746200	6949	600	1978	TG17-172592
TG17-19	19	25	92	535000	742600	6929	580	1980	TG17-192592
TG17-20	20	25	92	534800	745800	6940	540	1978	TG17-202592
TG18-17	17	25	92	535800	746200	6961	600	1978	TG18-172592
TG18-19	19	25	92	534600	743000	6931	580	1980	TG18-192592
TG18-20	20	25	92	535000	745800	6943	600	1978	TG18-202592
TG19-17	17	25	92	535400	746600	6948	600	1978	TG19-172592
TG19-19	19	25	92	534800	743000	6940	580	1980	TG19-192592
TG19-20	20	25	92	535013	746209	6948	600	1978	TG19-202592
TG20-17	17	25	92	535800	746600	6956	600	1978	TG20-172592
TG20-18	18	25	92	535200	742600	6935	580	1980	TG20-182592
TG20-19	19	25	92	535000	743000	6935	580	1980	TG20-192592
TG20-20	20	25	92	534800	746200	6941	540	1978	TG20-202592
TG21-17	17	25	92	535600	745800	6954	600	1978	TG21-172592
TG21-18	18	25	92	535200	743000	6933	580	1980	TG21-182592
TG21-19	19	25	92	534800	743400	6936	580	1980	TG21-192592
TG21-20	20	25	92	534600	746200	6949	516	1978	TG21-202592
TG22-17	17	25	92	536000	745800	6966	600	1978	TG22-172592
TG22-18	18	25	92	535400	743000	6938	580	1980	TG22-182592
TG22-19	19	25	92	535000	743400	6942	580	1980	TG22-192592
TG22-20	20	25	92	534600	746600	6947	540	1978	TG22-202592
TG23-17	17	25	92	535200	747000	6948	600	1978	TG23-172592
TG23-18	18	25	92	535200	743400	6942	580	1980	TG23-182592
TG23-19	19	25	92	535000	742200	6936	580	1980	TG23-192592
TG23-20	20	25	92	534800	746600	6944	540	1978	TG23-202592
TG24-17	20	25	92	535400	747000	6944	600	1978	TG24-172592
TG24-18	18	25	92	535417	743401	6948	580	1980	TG24-182592
TG24-19	19	25	92	534800	742200	6931	580	1980	TG24-192592
TG24-20	17	25	92	535000	746600	6951	600	1978	TG24-202592
TG25-17	17	25	92	535200	747400	6954	600	1978	TG25-172592
TG25-18	18	25	92	535600	743400	6942	580	1980	TG25-182592
TG25-19	19	25	92	534600	742200	6931	580	1980	TG25-192592
TG25-20	20	25	92	535000	747000	6949	600	1978	TG25-202592
TG26-17	17	25	92	535400	747400	6953	600	1978	TG26-172592
TG26-20	20	25	92	534800	747000	6950	540	1978	TG26-202592
TG27-17	17	25	92	535800	747400	6960	600	1978	TG27-172592
TG27-18	18	25	92	535302	743392	6951	580	1980	TG27-182592
TG27-20	20	25	92	534600	747000	6951	540	1978	TG27-202592
TG28-17	17	25	92	535800	747000	6956	600	1978	TG28-172592
TG28-20	20	25	92	534600	747400	6956	600	1978	TG28-202592
TG29-17	17	25	92	535600	745400	6946	600	1978	TG29-172592
TG29-20	20	25	92	534800	747400	6953	540	1978	TG29-202592
TG30-17	17	25	92	536000	746200	6964	600	1978	TG30-172592
TG30-20	20	25	92	535000	747400	6952	600	1978	TG30-202592
TG31-20	20	25	92	535000	747800	6957	600	1978	TG31-202592
TG32-17	17	25	92	535200	747800	6956	600	1978	TG32-172592
TG32-20	20	25	92	534800	747800	6953	540	1978	TG32-202592
TG33-17	17	25	92	535400	747800	6957	600	1978	TG33-172592
TG33-20	20	25	92	534600	747800	6949	540	1978	TG33-202592
TG34-17	17	25	92	535200	748200	6958	600	1978	TG34-172592
TG34-20	20	25	92	535000	748200	6955	600	1978	TG34-202592
TG35-17	17	25	92	535200	748600	6954	600	1978	TG35-172592
TG35-20	20	25	92	534800	748200	6949	540	1978	TG35-202592
TG36-17	17	25	92	535200	743800	6940	580	1980	TG36-172592

Attachment D5-2 Locations, Total Depths, and Completion Dates of Historical Drill Holes

HOLE ID	S	T	R	N	E	ELEV	TD	Year Drilled	HOLE ID's
TG36-20	20	25	92	534600	748200	6943	540	1978	TG36-202592
TG37-17	17	25	92	535400	743800	6947	580	1980	TG37-172592
TG38-17	17	25	92	535200	744200	6937	580	1980	TG38-172592
TG39-17	17	25	92	535400	744200	6941	580	1978	TG39-172592
TG39-20	20	25	92	535000	748600	6950	600	1978	TG39-202592
TG40-17	17	25	92	535600	744200	6949	580	1980	TG40-172592
TG41-17	17	25	92	535200	744600	6938	580	1980	TG41-172592
TG41-20	20	25	92	534800	748600	6946	540	1978	TG41-202592
TG42-17	17	25	92	535440	744600	6942	580	1980	TG42-172592
TG42-20	20	25	92	534600	748600	6941	540	1978	TG42-202592
TG43-17	17	25	92	535600	744800	6950	580	1980	TG43-172592
TG43-20	20	25	92	534400	748600	6939	540	1978	TG43-202592
TG44-17	17	25	92	535800	745200	6958	580	1980	TG44-172592
TG44-20	20	25	92	531400	743800	6879	460	1979	TG44-202592
TG45-17	17	25	92	535800	745600	6958	580	1980	TG45-172592
TG46-17	17	25	92	536000	745600	6962	580	1980	TG46-172592
TG47-17	17	25	92	535800	746000	6958	580	1980	TG47-172592
TG48-17	17	25	92	535600	743800	6951	580	1980	TG48-172592
TG49-17	17	25	92	535300	744200	6938	580	1980	TG49-172592
TG50-17	17	25	92	535500	744200	6945	580	1980	TG50-172592
TG51-17	17	25	92	536400	746400	6972	600	1981	TG51-172592
TG52-17	17	25	92	538400	747200	7001	600	1981	TG52-172592
TG52-20	20	25	92	534600	743800	6929	580	1980	TG52-202592
TG53-20	20	25	92	534800	743800	6933	580	1980	TG53-202592
TG54-20	20	25	92	535000	743800	6936	580	1980	TG54-202592
TG55-20	20	25	92	534400	744200	6926	580	1980	TG55-202592
TG56-20	20	25	92	534600	744200	6928	580	1980	TG56-202592
TG57-20	20	25	92	534800	744200	6932	580	1980	TG57-202592
TG58-20	20	25	92	535000	744200	6936	580	1980	TG58-202592
TG59-20	20	25	92	534600	744600	6928	580	1980	TG59-202592
TG60-20	20	25	92	534800	744600	6930	580	1980	TG60-202592
TG61-20	20	25	92	535014	744604	6939	580	1980	TG61-202592
TG62-20	20	25	92	534800	745000	6933	580	1980	TG62-202592
TG63-20	20	25	92	534600	745200	6938	580	1980	TG63-202592
TG64-20	20	25	92	534800	745200	6938	580	1980	TG64-202592
TG65-20	20	25	92	535000	745200	6936	580	1980	TG65-202592
TG66-20	20	25	92	534600	745600	6935	580	1980	TG66-202592
TG67-20	20	25	92	534800	745600	6939	580	1980	TG67-202592
TG68-20	20	25	92	535000	745600	6941	580	1980	TG68-202592
TG69-20	20	25	92	534600	746000	6937	580	1980	TG69-202592
TG70-20	20	25	92	534800	746000	6941	580	1980	TG70-202592
TG71-20	20	25	92	535000	744800	6935	580	1980	TG71-202592
TG72-20	20	25	92	534700	744200	6930	580	1980	TG72-202592
TG73-20	20	25	92	535100	744200	6935	580	1980	TG73-202592
TGC1-19	19	25	92	534700	742600	6932	500	1980	TGC01-192592
TGC1A(45deg)	19	25	92	534502	742600	6927	300	1980	TGC01A-192592(45deg)
TGC1A(60deg)	19	25	92	534500	742600	6927	300	1980	TGC01A-192592(60deg)
TGC2-19	19	25	92	534860	742600	6935	480	1980	TGC02-192592
TGC16	18	25	92	535200	742850	6936	475	1979	TGC16-182592
TGC17	18	25	92	535200	742840	6935	423	1979	TGC17-182592
TGC18	18	25	92	535200	742830	6935	442	1979	TGC18-182592
TGC19	18	25	92	535200	742810	6935	475	1979	TGC19-182592
TGC20	18	25	92	535300	742600	6939	460	1980	TGC20-182592
TGC21	18	25	92	535100	742600	6933	480	1980	TGC21-182592
TT1	24	25	93	534248	736505	6945	680	1977	TT001-242593
TT2	24	25	93	534770	736632	6959	700	1977	TT002-242593
TT3	24	25	93	534715	736460	6962	720	1977	TT003-242593
TT4	24	25	93	532712	737140	6919	600	1977	TT004-242593
TT5	19	25	92	532690	739388	6913	580	1977	TT005-192592
TT6	19	25	92	532707	740881	6914	600	1977	TT006-192592
TT7	24	25	93	533583	736925	6928	820	1978	TT007-242593

Attachment D5-2 Locations, Total Depths, and Completion Dates of Historical Drill Holes

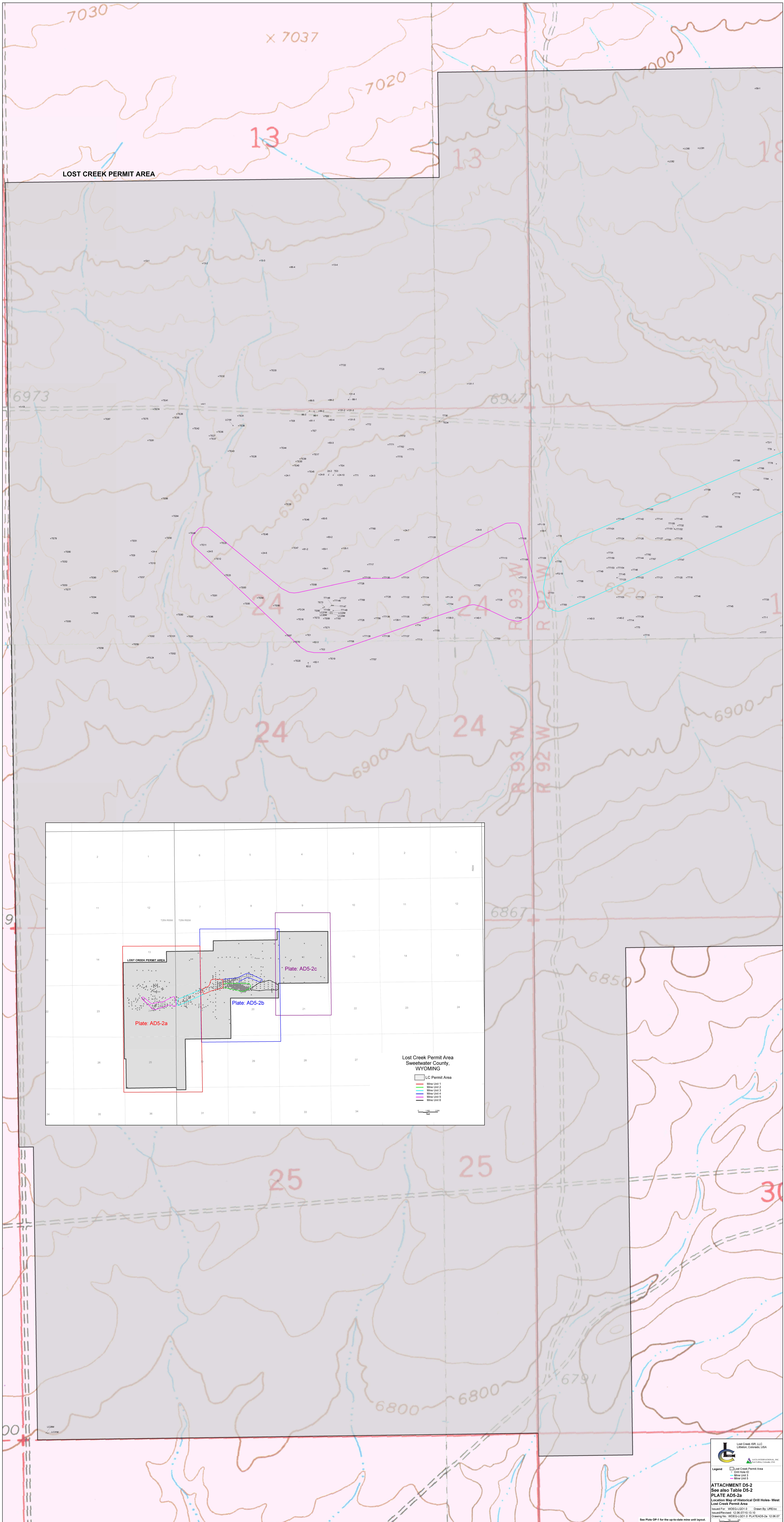
HOLE ID	S	T	R	N	E	ELEV	TD	Year Drilled	HOLE ID's
TT8	19	25	92	533626	738587	6923	740	1978	TT008-192592
TT9	19	25	92	534510	740816	6928	600	1978	TT009-192592
TT10	18	25	92	538540	740748	6973	740	1977	TT010-182592
TT13	24	25	92	532565	737144	6914	500	1977	TT013-242593
TT14	19	25	92	532763	739313	6914	500	1977	TT014-192592
TT15	19	25	92	532611	739476	6912	540	1977	TT015-192592
TT16	19	25	92	532570	741037	6907	600	1977	TT016-192592
TT17	24	25	93	533334	736646	6927	1140	1977	TT017-242593
TT18	19	25	92	533201	739915	6923	1000	1977	TT018-192592
TT19	19	25	92	534410	740974	6921	600	1977	TT019-192592
TT20	18	25	92	538428	740962	6972	1160	1977	TT020-182592
TT22	13	25	93	535378	736361	6975	700	1977	TT022-132593
TT23	13	25	93	535338	736755	6974	600	1977	TT023-132593
TT24	13	25	93	535303	737181	6972	600	1977	TT024-132593
TT25	13	25	93	533003	736823	6923	700	1977	TT025-242593
TT26	24	25	93	532765	736551	6922	700	1977	TT026-242593
TT27	24	25	93	532993	736379	6929	700	1977	TT027-242593
TT28	24	25	93	533139	736549	6926	700	1977	TT028-242593
TT29	24	25	93	532972	737964	6913	700	1977	TT029-242593
TT30	19	25	92	534804	737380	6919	780	1977	TT030-192592
TT31	19	25	92	533454	739102	6923	600	1977	TT031-192592
TT32	19	25	92	533734	739826	6930	600	1977	TT032-192592
TT33	23	25	93	532975	740698	6911	600	1977	TT033-232593
TT34	19	25	92	534200	740986	6921	600	1977	TT034-192592
TT35	19	25	92	532657	741212	6909	600	1977	TT035-192592
TT36	19	25	92	532838	741601	6910	600	1977	TT036-192592
TT37	19	25	92	535203	741350	6936	800	1977	TT037-182592
TT38	19	25	92	533221	741874	6911	600	1977	TT038-192592
TT39	19	25	92	534597	741211	6930	600	1977	TT039-192592
TT40	19	25	92	534099	740600	6924	800	1977	TT040-192592
TT41	19	25	92	533990	741087	6916	600	1977	TT041-192592
TT42	19	25	92	534423	741109	6925	600	1977	TT042-192592
TT43	19	25	92	533475	741581	6913	1000	1977	TT043-192592
TT44	19	25	92	532722	741402	6912	600	1977	TT044-192592
TT45	19	25	92	532906	740333	6918	1000	1977	TT045-192592
TT46	19	25	92	533009	739997	6920	1000	1977	TT046-192592
TT47	19	25	92	533382	739831	6921	700	1977	TT047-192592
TT48	19	25	92	533279	739352	6920	1000	1977	TT048-192592
TT49	19	25	92	533263	738999	6919	1000	1977	TT049-192592
TT50	19	25	92	533364	738575	6919	900	1977	TT050-192592
TT51	19	25	92	533043	738499	6913	1000	1977	TT051-192592
TT52	24	25	93	533120	737742	6919	1000	1977	TT052-242593
TT53	24	25	93	532575	737943	6907	1000	1977	TT053-242593
TT54	24	25	93	532929	737462	6916	700	1977	TT054-242593
TT55	24	25	93	532657	737323	6915	700	1977	TT055-242593
TT56	24	25	93	532783	736716	6921	700	1977	TT056-242593
TT57	24	25	93	532360	736674	6916	700	1977	TT057-242593
TT58	24	25	93	532547	736445	6919	700	1977	TT058-242593
TT59	24	25	93	533264	736402	6928	1060	1977	TT059-242593
TT60	24	25	93	533701	736666	6933	900	1977	TT060-242593
TT61	24	25	93	532780	736311	6921	700	1977	TT061-242593
TT62	24	25	93	534541	736958	6948	820	1977	TT062-242593
TT63	19	25	92	534730	741361	6933	600	1977	TT063-192592
TT64	19	25	92	534205	740788	6923	600	1977	TT064-192592
TT65	19	25	92	533720	740218	6928	600	1977	TT065-192592
TT66	19	25	92	534320	740648	6927	600	1978	TT066-192592
TT67	19	25	92	533390	739541	6922	700	1978	TT067-192592
TT68	19	25	92	533163	738795	6915	700	1978	TT068-192592
TT69	24	25	93	532971	736555	6924	700	1978	TT069-242593
TT70	24	25	93	534439	736943	6947	760	1978	TT070-242593
TT71	24	25	93	534563	736857	6951	760	1978	TT071-242593

Attachment D5-2 Locations, Total Depths, and Completion Dates of Historical Drill Holes

HOLE ID	S	T	R	N	E	ELEV	TD	Year Drilled	HOLE ID's
TT72	24	25	93	534652	736971	6951	760	1978	TT072-242593
TT73	24	25	93	534513	737060	6947	760	1978	TT073-242593
TT74	19	25	92	534519	741445	6928	600	1978	TT074-192592
TT75	19	25	92	534637	741746	6927	600	1978	TT075-192592
TT76	19	25	92	532907	741106	6921	600	1978	TT076-192592
TT77	19	25	92	532638	740672	6909	600	1978	TT077-192592
TT78	19	25	92	534367	740835	6925	600	1978	TT078-192592
TT79	19	25	92	534052	740388	6931	600	1978	TT079-192592
TT80	19	25	92	533823	740077	6933	600	1978	TT080-192592
TT81	19	25	92	533587	739699	6926	700	1978	TT081-192592
TT82	19	25	92	533435	739490	6923	700	1978	TT082-192592
TT83	19	25	92	532922	738626	6911	700	1978	TT083-192592
TT84	24	25	93	532787	738163	6908	700	1978	TT084-242593
TT85	19	25	92	534292	741243	6921	600	1978	TT085-192592
TT86	19	25	92	534431	741740	6921	600	1978	TT086-192592
TT87	19	25	92	534699	741544	6932	600	1978	TT087-192592
TT88	19	25	92	534732	741952	6926	600	1978	TT088-192592
TT89	19	25	92	533893	741807	6909	600	1978	TT089-192592
TT90	19	25	92	535196	741864	6937	600	1978	TT090-182592
TT94	18	25	92	535900	742100	6948	660	1978	TT094-182592
TT95	18	25	92	535500	742100	6938	660	1978	TT095-182592
TT96	18	25	92	535100	742100	6934	660	1978	TT096-182592
TT97	19	25	93	534723	742106	6927	600	1978	TT097-192592
TT98	19	25	92	534400	740400	6912	700	1978	TT098-192592
TT99	19	25	92	534100	740100	6916	700	1978	TT099-192592
TT100	19	25	92	533900	739500	6918	700	1977	TT100-192592
TT101	19	25	92	533700	739100	6912	700	1977	TT101-192592
TT102	19	25	92	533000	738800	6914	660	1977	TT102-192592
TT103	19	25	92	533000	739200	6918	700	1977	TT103-192592
TT104	19	25	92	533000	739600	6919	600	1977	TT104-192592
TT105	24	25	93	533600	738200	6926	660	1977	TT105-192592
TT106	24	25	93	533385	738216	6924	700	1977	TT106-242593
TT107	24	25	93	532919	737215	6920	700	1977	TT107-242593
TT108	24	25	93	533613	737270	6924	700	1977	TT108-242593
TT109	19	25	92	533400	738400	6923	700	1977	TT109-192592
TT110	19	25	92	534063	740395	6932	560	1977	TT110-192592
TT111	19	25	92	534741	741947	6928	500	1977	TT111-192592
TT112	24	25	93	533200	738200	6919	660	1977	TT112-242593
TT113	24	25	93	533400	738000	6921	660	1977	TT113-242593
TT114	24	25	93	533000	737200	6920	660	1977	TT114-242593
TT120	19	25	92	533200	739800	6920	600	1977	TT120-192592
TT121	19	25	92	533200	739600	6919	600	1977	TT121-192592
TT122	19	25	92	533200	739400	6919	600	1977	TT122-192592
TT123	19	25	92	533200	739200	6919	600	1977	TT123-192592
TT124	19	25	92	533600	739200	6927	620	1977	TT124-192592
TT125	19	25	92	533000	739400	6917	600	1977	TT125-192592
TT126	19	25	92	533600	739400	6927	600	1977	TT126-192592
TT127	19	25	92	533600	739600	6926	600	1977	TT127-192592
TT128	19	25	92	532800	739400	6916	600	1977	TT128-192592
TT129	19	25	92	533600	739800	6926	600	1977	TT129-192592
TT130	24	25	93	533200	736800	6927	700	1977	TT130-242593
TT131	24	25	93	533200	737000	6924	700	1977	TT131-242593
TT132	24	25	93	533000	737000	6920	700	1977	TT132-242593
TT133	24	25	93	533200	736600	6927	700	1977	TT133-242593
TT134	24	25	93	533200	737200	6921	700	1977	TT134-242593
TT135	24	25	93	532800	737000	6922	700	1977	TT135-242593
TT136	24	25	93	532800	736800	6920	700	1977	TT136-242593
TT137	24	25	93	532600	737000	6919	700	1977	TT137-242593
TT138	24	25	93	532600	736800	6922	700	1977	TT138-242593
TT139	24	25	93	532600	736600	6922	630	1977	TT139-242593
TT140	19	25	92	533800	739800	6923	600	1977	TT140-192592

Attachment D5-2 Locations, Total Depths, and Completion Dates of Historical Drill Holes

HOLE ID	S	T	R	N	E	ELEV	TD	Year Drilled	HOLE ID's
TT141	19	25	92	533800	739600	6924	600	1977	TT141-192592
TT142	19	25	92	533800	739400	6922	620	1977	TT142-192592
TT143	19	25	92	533800	739200	6924	620	1977	TT143-192592
TT144	19	25	92	533400	739400	6922	620	1977	TT144-192592
TT145	19	25	92	533200	739200	6923	620	1977	TT145-192592
TT146	24	25	93	532967	736309	6929	700	1977	TT146-242593
TT147	24	25	93	532918	736308	6927	560	1977	TT147-242593
TT148	24	25	93	532918	736298	6927	560	1977	TT148-242593
TT149	24	25	93	532866	736307	6925	700	1977	TT149-242593
TT150	19	25	92	533400	739100	6925	650	1977	TT150-192592
TT151	19	25	92	533700	739700	6927	660	1977	TT151-192592
TT152	19	25	92	533695	739801	6910	520	1977	TT152-192592
TT153	19	25	92	533300	739100	6923	650	1977	TT153-192592
TT154	19	25	92	533300	739200	6924	700	1977	TT154-192592
TT155	19	25	92	533700	739790	6924	490	1977	TT155-192592
TT156	24	25	93	532918	736288	6927	600	1977	TT156-242593



LOST CREEK PERMIT AREA

13

13

18

6973

6947

24

24

1

24

24

R 93 W
R 92 W

6900

6867

6850

25

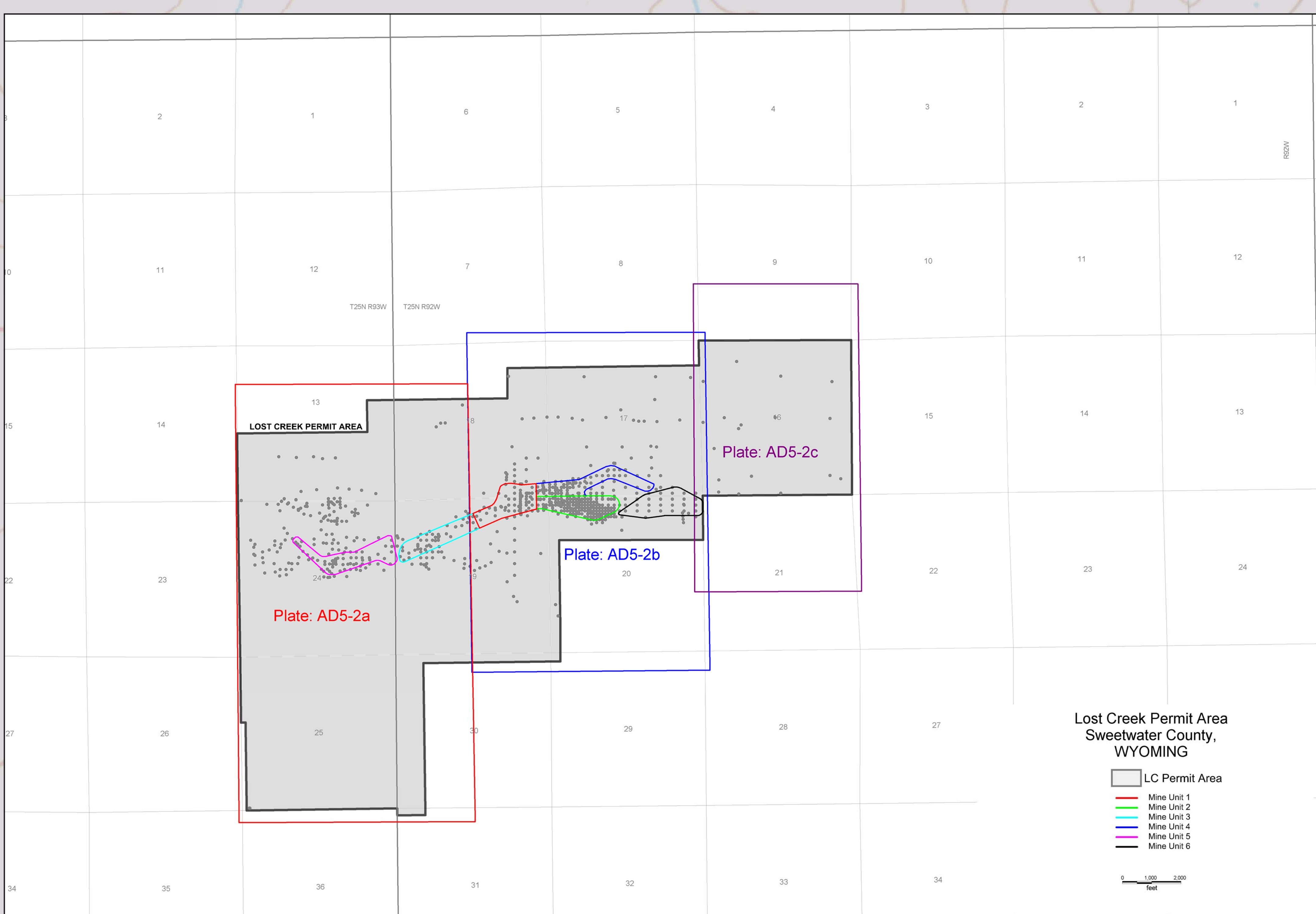
25

30

6800

6800

6791



Lost Creek Permit Area
Sweetwater County,
WYOMING

- LC Permit Area
- Mine Unit 1
- Mine Unit 2
- Mine Unit 3
- Mine Unit 4
- Mine Unit 5
- Mine Unit 6

Lost Creek DR, LLC
Littleton, Colorado, USA

Legend

- Lost Creek Permit Area
- Mine Unit 1
- Mine Unit 2
- Mine Unit 3
- Mine Unit 4
- Mine Unit 5
- Mine Unit 6

ATTACHMENT D5-2
See also Table D5-2
PLATE AD5-2a
Location Map of Historical Drill Holes - West
Lost Creek Permit Area

Issued For: WDEQ-120718
Issued/Revised: 12/06/18 13:10
Drawing No.: WDEQ-120718 PLATEAD5-2a 12/06/18

See Plate OP-1 for the up-to-date mine unit layout.

7037

70

LOST CREEK PERMIT AREA

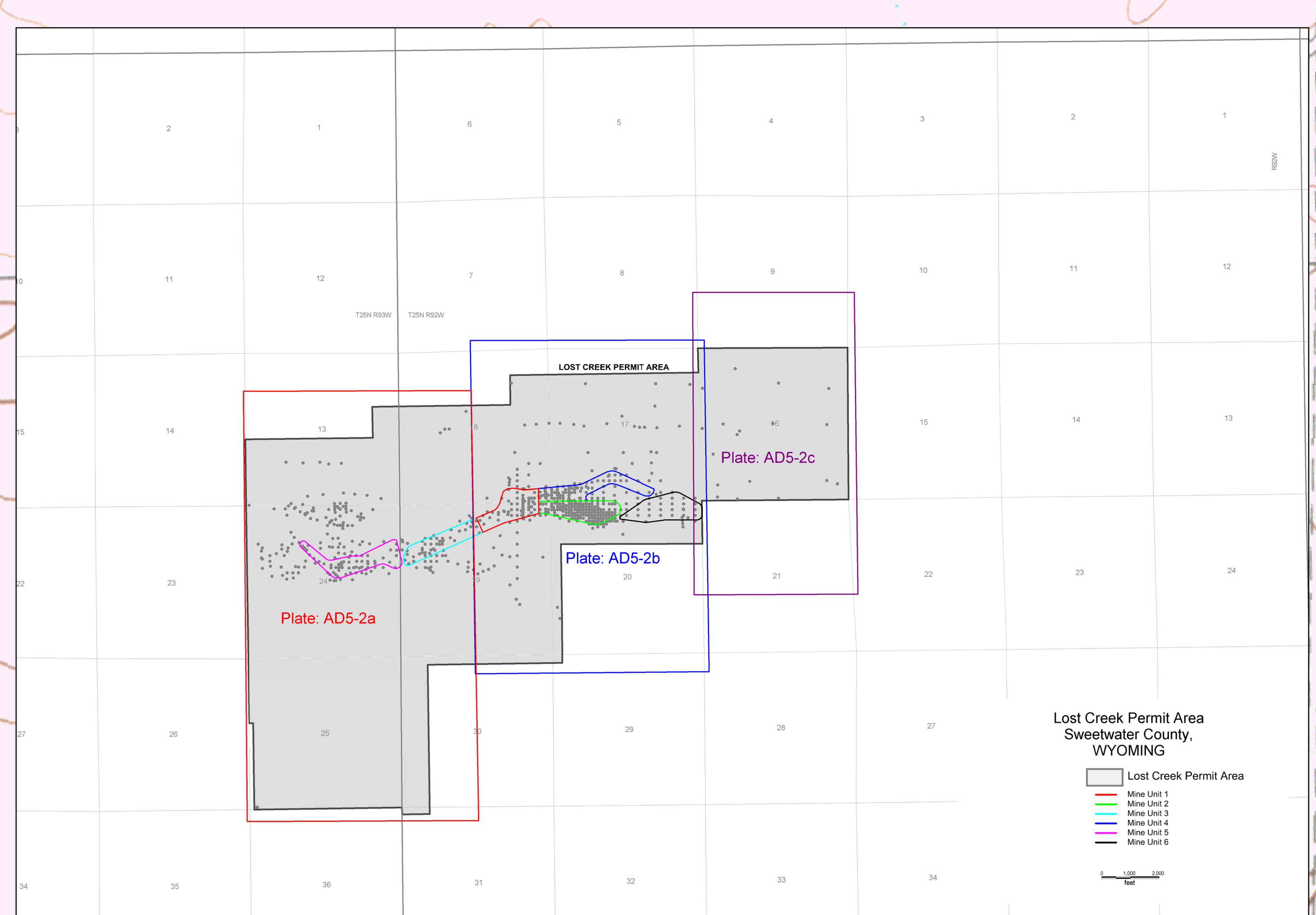
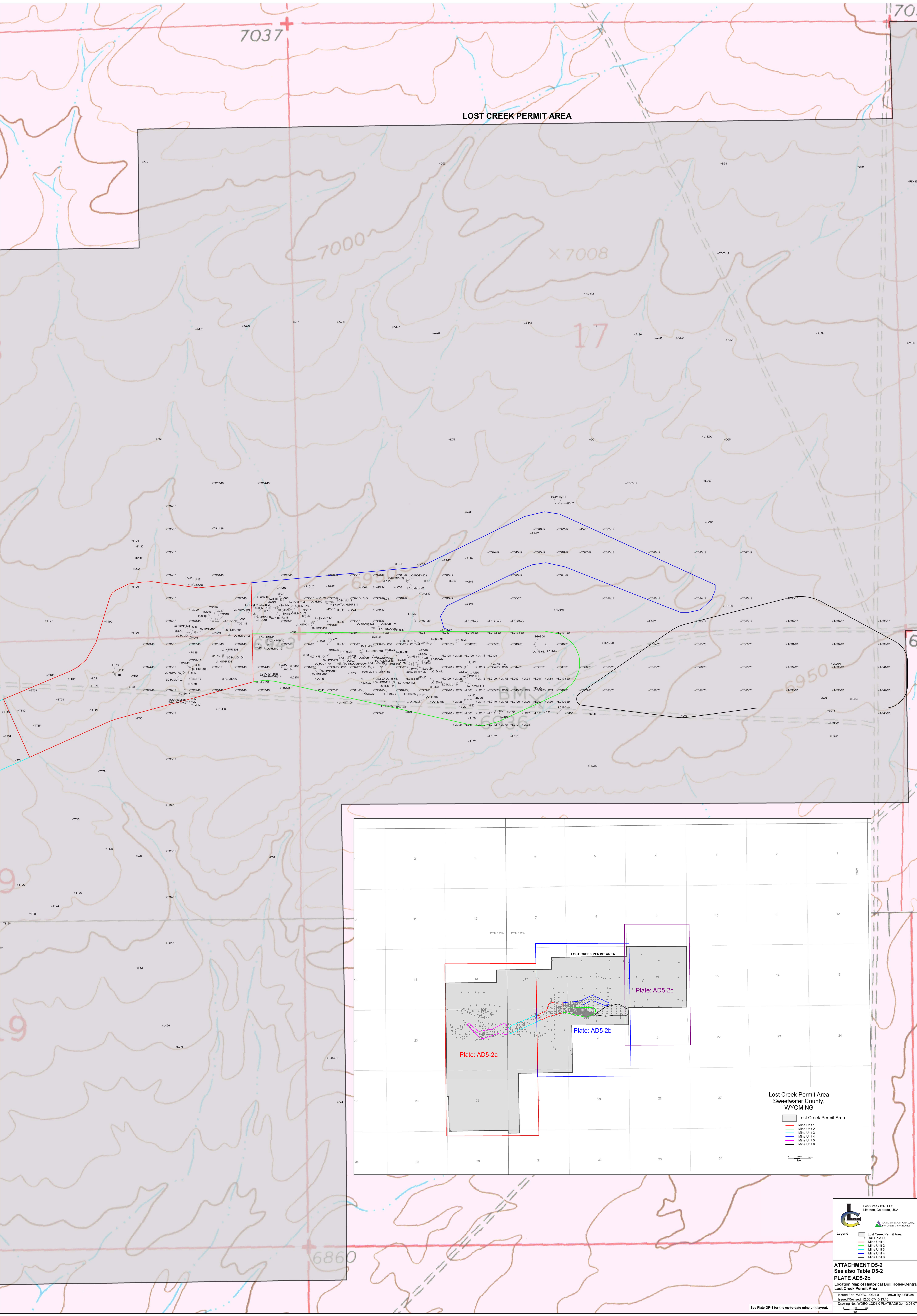
7000

X 7008

17

6950

6



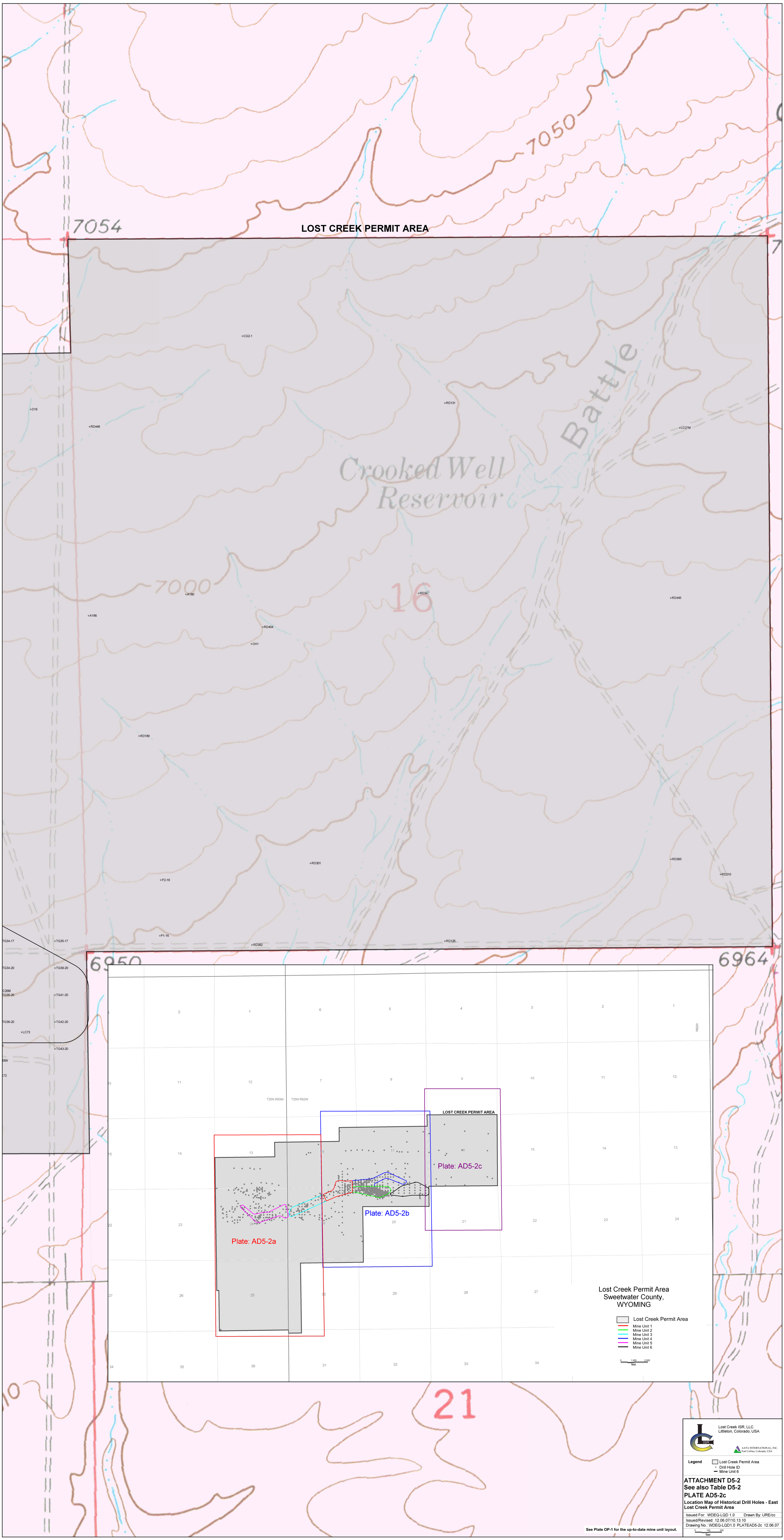
Lost Creek Permit Area
Sweetwater County,
WYOMING

- Lost Creek Permit Area
- Mine Unit 1
- Mine Unit 2
- Mine Unit 3
- Mine Unit 4
- Mine Unit 5
- Mine Unit 6

Legend
 Lost Creek Permit Area
 Drill Hole ID
 Mine Unit 1
 Mine Unit 2
 Mine Unit 3
 Mine Unit 4
 Mine Unit 5
 Mine Unit 6

ATTACHMENT D5-2
See also Table D5-2
PLATE AD5-2b
 Location Map of Historical Drill Holes-Central
 Lost Creek Permit Area
 Issued For: WDEQ-LDD1.0
 Issue/Revised: 12.06.07/12.13.10
 Drawing No.: WDEQ-LDD1.0 PLATEAD5-2b 12.06.07
 Drawn By: URE/EC

See Plate OP-1 for the up-to-date mine unit layout.



LOST CREEK PERMIT AREA

Crooked Well Reservoir

Battle

16

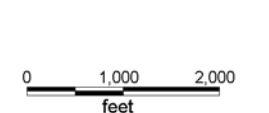
6950

6964

21

Lost Creek Permit Area
Sweetwater County,
WYOMING

- Lost Creek Permit Area
- Mine Unit 1
- Mine Unit 2
- Mine Unit 3
- Mine Unit 4
- Mine Unit 5
- Mine Unit 6




 Lost Creek ISR, LLC
 Littleton, Colorado, USA


 DATA INTERNATIONAL, INC.
 Fort Collins, Colorado, USA

Legend
 Lost Creek Permit Area
 Drill Hole ID
 Mine Unit 6

ATTACHMENT D5-2
See also Table D5-2
PLATE AD5-2c
 Location Map of Historical Drill Holes - East
 Lost Creek Permit Area

Issued For: WDEQ-LOD 1.0 Drawn By: URE/cc
 Issued/Revised: 12.06.07/10.13.10
 Drawing No.: WDEQ-LOD1.0 PLATEAD5-2c 12.06.07

See Plate OP-1 for the up-to-date mine unit layout.