


  
**Lost Creek ISR, LLC**  
 Littleton, Colorado USA  

  
 AFA INTERNATIONAL, INC.  
 Fort Collins, Colorado, USA

- Legend**
- Lost Creek Permit Area
  - County/BLM Road
- Sage Grouse Leks**
- + Occupied and Active
  - + Unoccupied and Active
  - + Inactive

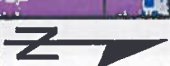
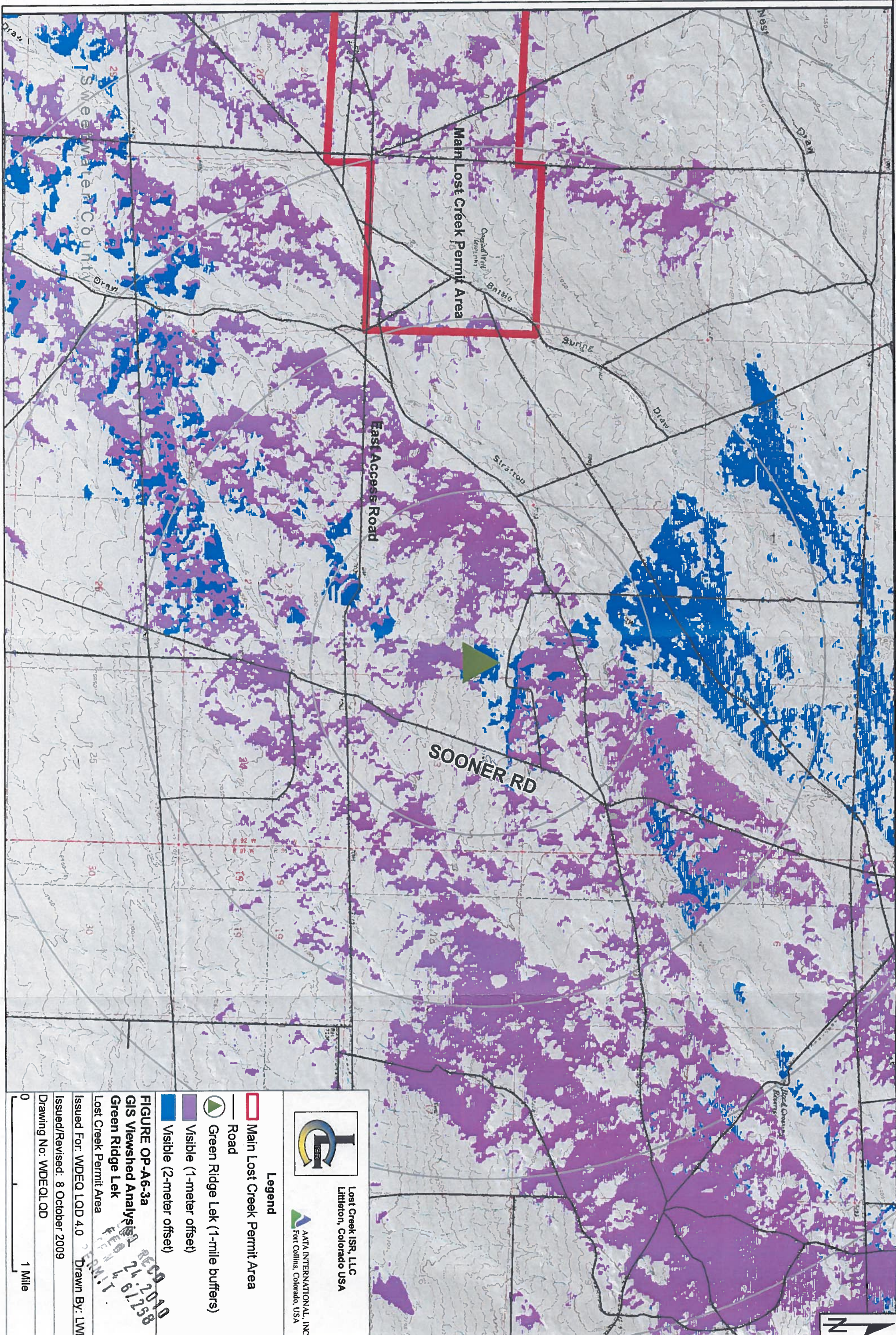
- 0.25-Mile Buffer (lighter for unoccupied)
  - 2-Mile Buffer (lighter for unoccupied)
- Lands to be Affected by Operations**
- Mine Unit 1
  - Mine Unit 2
  - Mine Unit 3
  - Mine Unit 4
  - Mine Unit 5
  - Mine Unit 6

- Pipeline
- Powerline
- Main On-Site Access Roads
- Deep Well Locations
- Plant Site

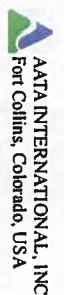
**NOTE:**  
 See Plate OP-1  
 for the up-to-date  
 mine unit layout

**FIGURE OP-A6-2**  
**SAGE GROUSE LEKS PERMIT**  
 LRU  
 SEP 29 2010  
 TFN 6/268

Issued For: WDEQ and USFWS  
 Issued/Revised: 9.25.09 Drawn By: HN  
 Drawing No. WDEQLD FIGOP-A6-2  
 0 1 Mile  
 1 inch = 4,000 feet



Lost Creek ISR, LLC  
Littleton, Colorado USA



AATA INTERNATIONAL, INC.  
Fort Collins, Colorado, USA

**Legend**

- Main Lost Creek Permit Area
- Road
- Green Ridge Lek (1-mile buffers)
- Visible (1-meter offset)
- Visible (2-meter offset)

FIGURE OP-A6-3a

GIS Viewshed Analysis

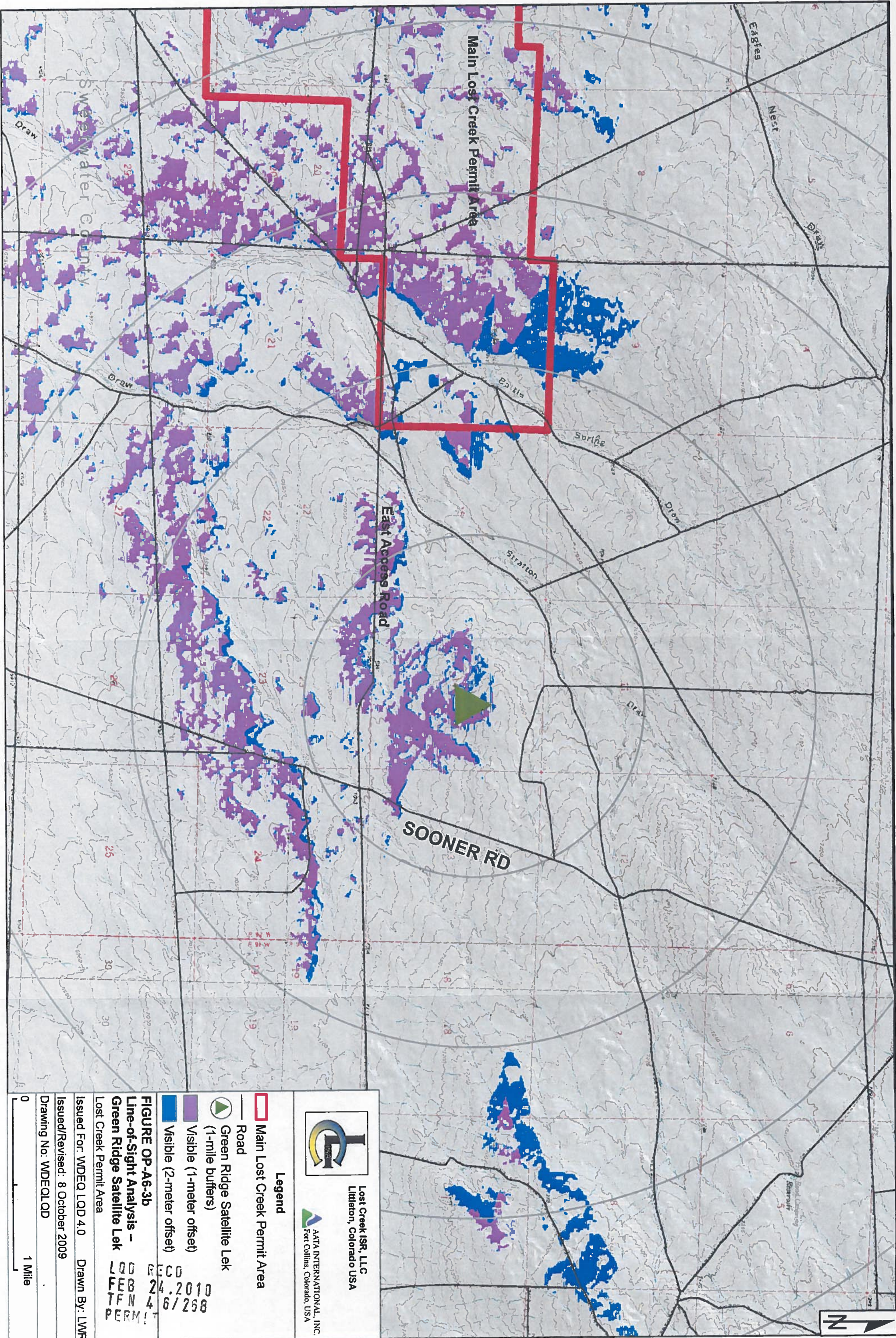
Green Ridge Lek

Lost Creek Permit Area

Issued For: WDEQ LOD 4.0  
Issued/Revised: 8 October 2009  
Drawing No.: WDEQL0D

REC'D 24-2010  
 892758  
 PERMIT

0 1 Mile



Lost Creek ISR, LLC  
 Littleton, Colorado USA  
 AATA INTERNATIONAL, INC.  
 Fort Collins, Colorado, USA

**Legend**

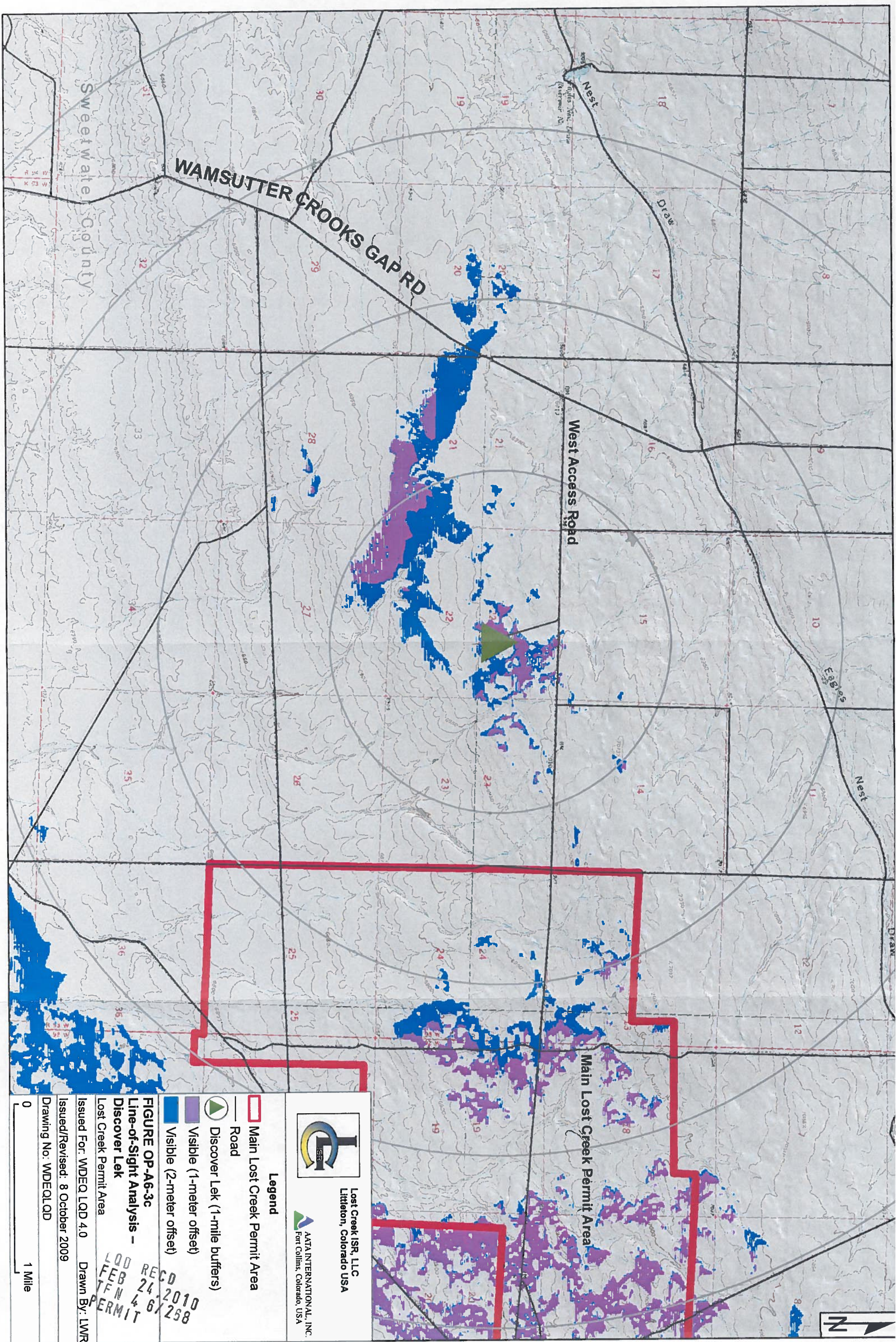
- Main Lost Creek Permit Area
- Road
- ▶ Green Ridge Satellite Lek (1-mile buffers)
- Visible (1-meter offset)
- Visible (2-meter offset)

**FIGURE OP-A6-3b**  
**Line-of-Sight Analysis -**  
**Green Ridge Satellite Lek**  
 Lost Creek Permit Area

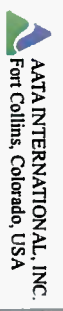
Issued For: WDEQ LOD 4.0      Drawn By: LWR  
 Issued/Revised: 8 October 2009  
 Drawing No. WDEQLOD

0 1 Mile

REC'D  
 FEB 24 2010  
 TFN 4 6/258  
 PERM!



Lost Creek ISR, LLC  
Littleton, Colorado USA



AATA INTERNATIONAL, INC.  
Fort Collins, Colorado, USA

**Legend**

- Main Lost Creek Permit Area
- Road
- Discover Lek (1-1 mile buffers)
- Visible (1-meter offset)
- Visible (2-meter offset)

**FIGURE OP-A6-3c**  
**Line-of-Sight Analysis -**  
**Discover Lek**  
Lost Creek Permit Area

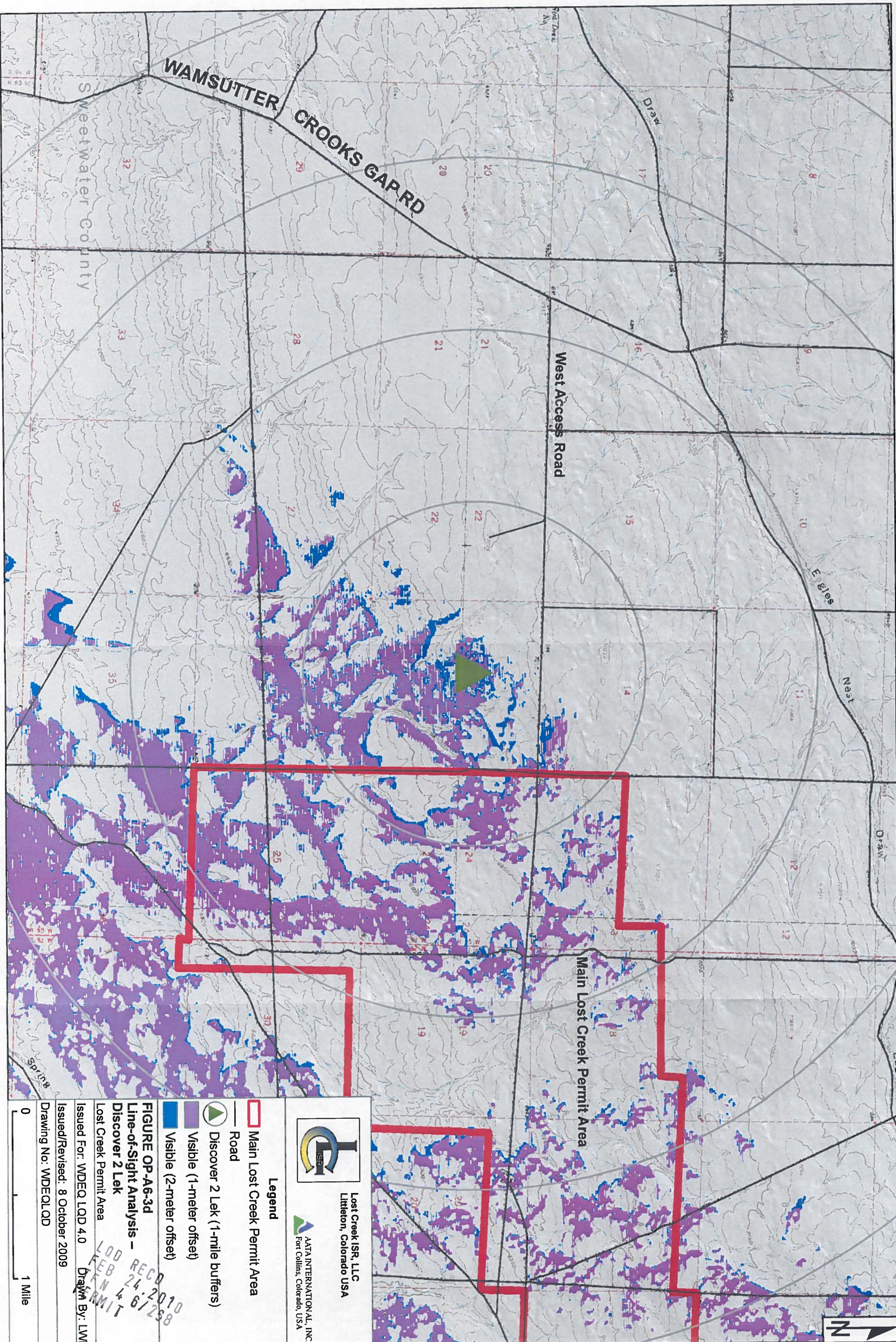
Issued For: WDEQ LQD 4.0 Drawn By: LWR

Issued/Revised: 8 October 2009

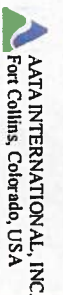
Drawing No: WDEQLQD

0 1 Mile

REC'D  
 FEB 24 2010  
 TFW 4 6 298  
 PERMIT



Lost Creek ISR, LLC  
Littleton, Colorado USA



AATA INTERNATIONAL, INC.  
Fort Collins, Colorado, USA

**Legend**

Main Lost Creek Permit Area

Road

Discover 2 Lek (1-mile buffers)

Visible (1-meter offset)

Visible (2-meter offset)

**FIGURE OP-A6-3d**

**Line-of-Sight Analysis -**

**Discover 2 Lek**

Lost Creek Permit Area

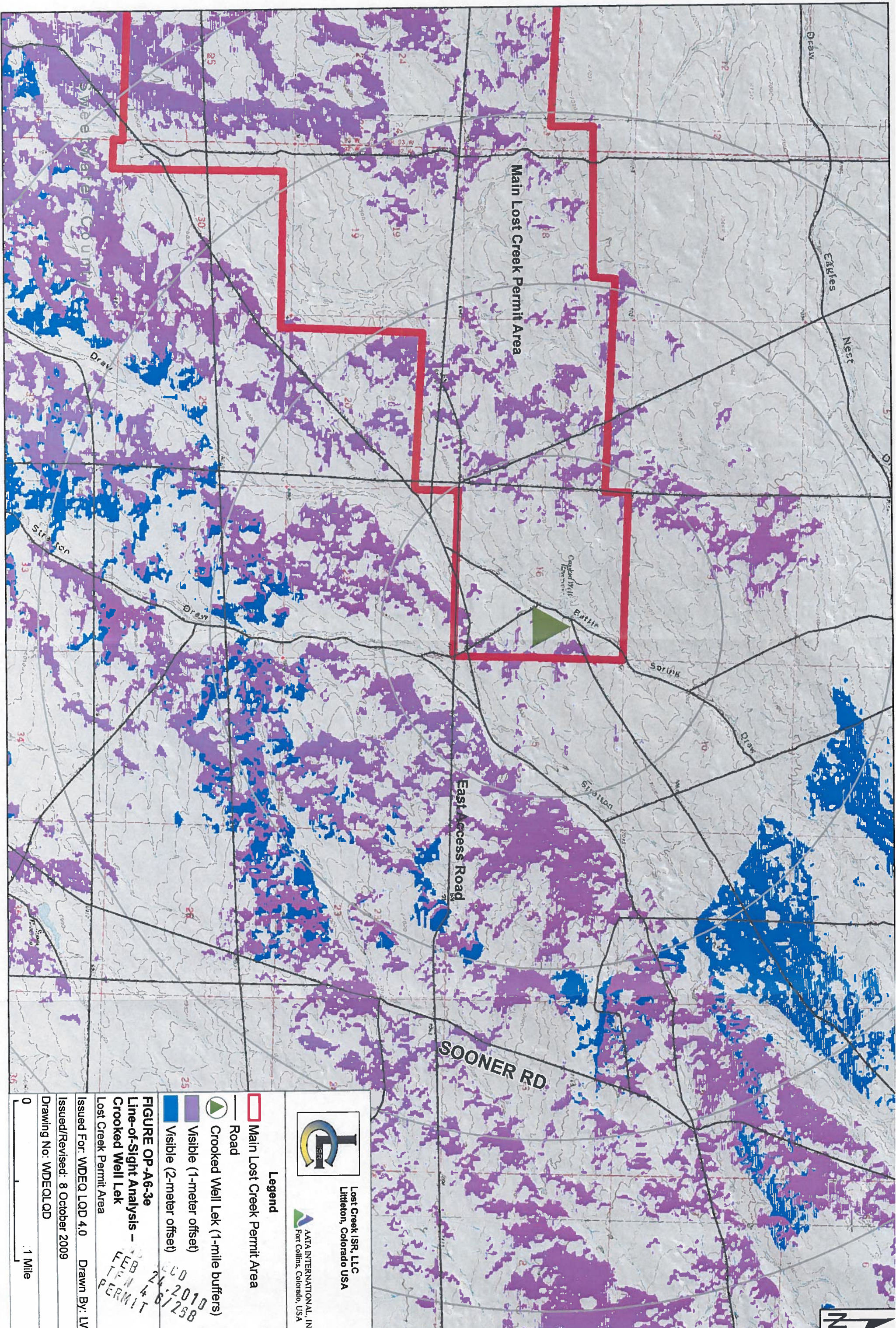
Issued For: WDEQ LOD 4.0 Drawn By: LWR

Issued/Revised: 8 October 2009

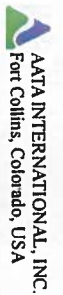
Drawing No: WDEQL0D

0 1 Mile






LOD REC'D  
FEB 24 2010  
FEB 4 6/238  
PERMIT



Lost Creek ISR, LLC  
Littleton, Colorado USA



**Legend**

-  Main Lost Creek Permit Area
-  Road
-  Crooked Well Lek (1-mile buffers)
-  Visible (1-meter offset)
-  Visible (2-meter offset)

**FIGURE OP-A6-3e**  
Line-of-Sight Analysis –  
Crooked Well Lek  
Lost Creek Permit Area

Issued For: WDEQ LOD 4.0 Drawn By: LWR  
Issued/Revised: 8 October 2009  
Drawing No.: WDEQL0D

FEB 24 2010  
TFW 4 8/258  
PERMIT

0 1 Mile

Figure OP-A6-4 - 360° Panoramas from the Discover and Discover 2 Leks - September 2009



Discover Lek  
North

East

South

West

North



Discover 2 Lek  
North

East

South

West

North

IND REC'D  
FEB 24, 2010  
4, 6 / 258  
PERMIT