

# Lost Creek ISR, LLC TYPE LOG – LOST CREEK PROJECT

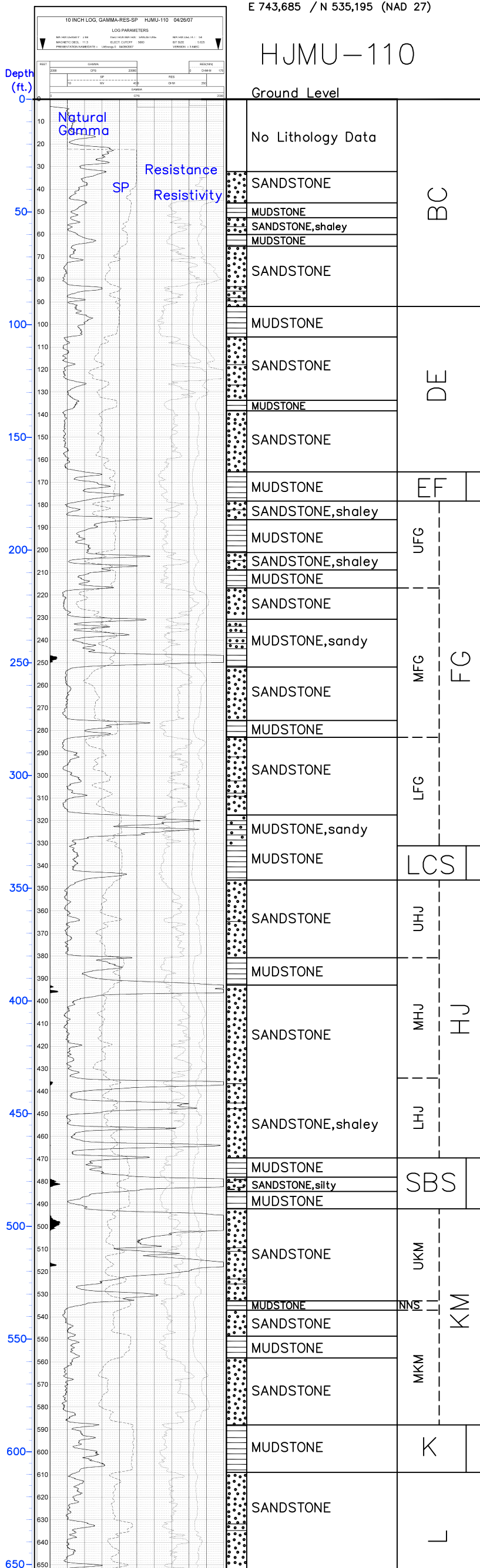
WELL # HJMU-110

E 2,212,004 / N 595,897 (NAD 83)  
E 743,685 / N 535,195 (NAD 27)

## Battle Springs Formation – Typical Lithology

### HJMU-110

Ground Level



**SANDSTONE:** arkosic; medium to very coarse-grained, locally fine-grain; poorly-sorted; subangular to angular; weakly to moderately consolidated, moderately firm. Represents bed-load to mixed-load, channel-fill fluvial environments within a distal alluvial fan system.

**MUDSTONE,** commonly very silty and/or sandy; soft to very firm; and **CLAYSTONE,** moderately firm to very firm, dense, blocky. Secondary amounts of **SILTSTONE,** commonly very sandy, firm to very firm.

Represents inter-channel and overbank fluvial environments.

Considerable lateral facies changes, inter-tonguing, and overlapping occurs between the two dominant lithologies. This can be very dramatic within short distances.

**DE Horizon:** Multiple sandstone units interbedded with mudstones. Host to secondary amounts of uranium mineralization.

**EF (upper No-Name Shale):** Mudstone and claystone, commonly silty and/or sandy; locally with interbedded very fine-grained sands. Does not exhibit lateral continuity throughout project area. Represents a series of overlapping shaley units.

Overlying Aquifer

**FG Horizon:** Multiple sandstone units interbedded with mudstones. Host to secondary amounts of uranium mineralization.

Upper Confining Unit

**LCS (Lost Creek Shale):** Mudstone and claystone, commonly silty and/or sandy; locally with interbedded very fine-grained sands. Exhibits lateral continuity throughout project area. Commonly intertongues with upper portions of the HJ and lower portions of the FG.

Production Zone Aquifer

**HJ Horizon:** Multiple sandstone units interbedded with mudstones. Primary host to uranium mineralization.

Lower Confining Unit

**SBS (Sagebrush Shale):** Mudstone and claystone, commonly silty and/or sandy; locally with interbedded very fine-grained sands. Exhibits lateral continuity throughout project area. Commonly intertongues with upper portions of the KM and lower portions of the HJ.

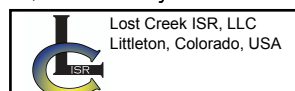
Underlying Aquifer

**KM Horizon:** Multiple sandstone units interbedded with mudstones. Host to significant uranium mineralization.

Includes NNS (No Name Shale) separating UKM from MKM. Does not exhibit regional continuity.

(Note: MKM has recently been renamed LKM).

**K (K Shale):** Mudstone and claystone, commonly silty and/or sandy.



**FIGURE D5-2b**  
**Stratigraphic Column, Upper Battle Spring Formation**  
**Lost Creek Permit Area**

Issued For: WDEQ-LQD 3.0

Issued/Revised: 4.28.09

Drawn By: CVH

Vertical Scale: 1"=50' (TD 850)