

# HJMO-101

## Lost Creek ISR, LLC WELL COMPLETION REPORT

HJMO-101

WELL # HJMO-101 SEO # 179865 Date Drilled: 8-2-07

Location: E 743,281 / N 534,988 (NAD 27)

Ground Elev: 6904.24 Measure Point Elev: 6905.45

TD: 326 ft. Hole Dia.: 7-7/8"

CASED to: 295 Casing: PVC SDR17 ID: 4.5" OD: 5"

GROUT: Portland Cement – Type I/II  
Pumped thru casing, displaced to surface with water

COMPLETION Aquifer: LFG Sand

Static Water Level: Depth 170' Elev: 6736' (avg.)

UNDERREAM: Blade Dia: 10-1/2"

Intervals: from 295' to 326' / length 31'

from \_\_\_\_\_ to \_\_\_\_\_ / length \_\_\_\_\_

### SCREEN LINER ASSEMBLY

Description	Depth	Elev.	Length
	From – To	/ From – To	
K-packer	283'	6622'	
Screen	295' 325'	6610' 6580'	30'

### SCREEN SPECIFICATIONS:

Slot: 0.030" Composition 3" PVC

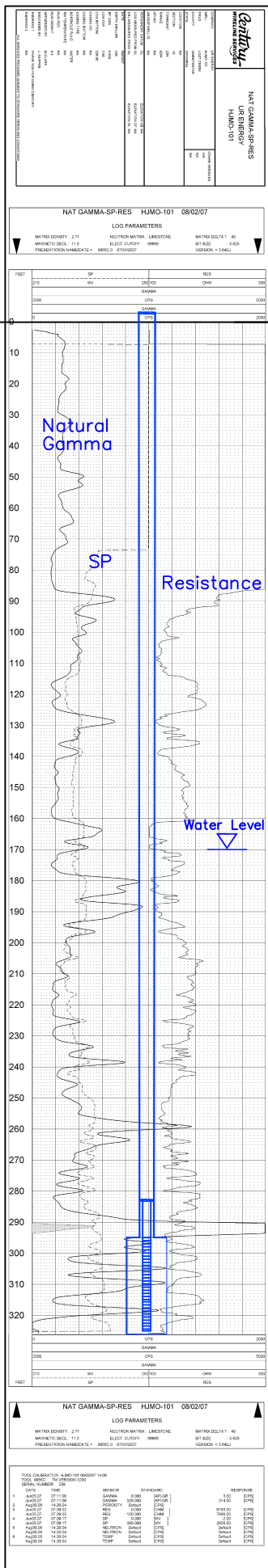
### FILTER PACKING:

Volume: \_\_\_\_\_ (bags)(ft<sup>3</sup>) Sand Specs. \_\_\_\_\_

Method: N/A

WELL STIMULATION: Method Airlift

Yield: Good / Moderate / Poor



Vertical Scale: 1"=50'

HJMO-101