

HJMO-105

Lost Creek ISR, LLC WELL COMPLETION REPORT

HJMO-105

WELL # HJMO-105 SEO # 179877 Date Drilled: 08-13-07

Location: E 742,953 / N 535,074 (NAD 27)

Ground Elev: 6936.84 Measure Point Elev: 6938.00

TD: 326 ft. Hole Dia.: 7-7/8"

CASED to: 300' Casing: PVC SDR17 ID: 4.5" OD: 5"

GROUT: Portland Cement – Type I/II
Pumped thru casing, displaced to surface with water

COMPLETION Aquifer: LFG Sand

Static Water Level: Depth 159' Elev: 6779' (avg.)

UNDERREAM: Blade Dia: 10-1/2"

Intervals: from 300' to 323' /length 23'
from _____ to _____ /length _____

SCREEN LINER ASSEMBLY

Description	Depth	Elev.	Length
	From – To	/ From – To	
K-packer	288'	6650'	
Screen	300' – 320'	6638' – 6618'	20'

SCREEN SPECIFICATIONS:

Slot: 0.030" Composition 3" PVC

FILTER PACKING:

Volume: _____ (bags)(ft³) Sand Specs. _____

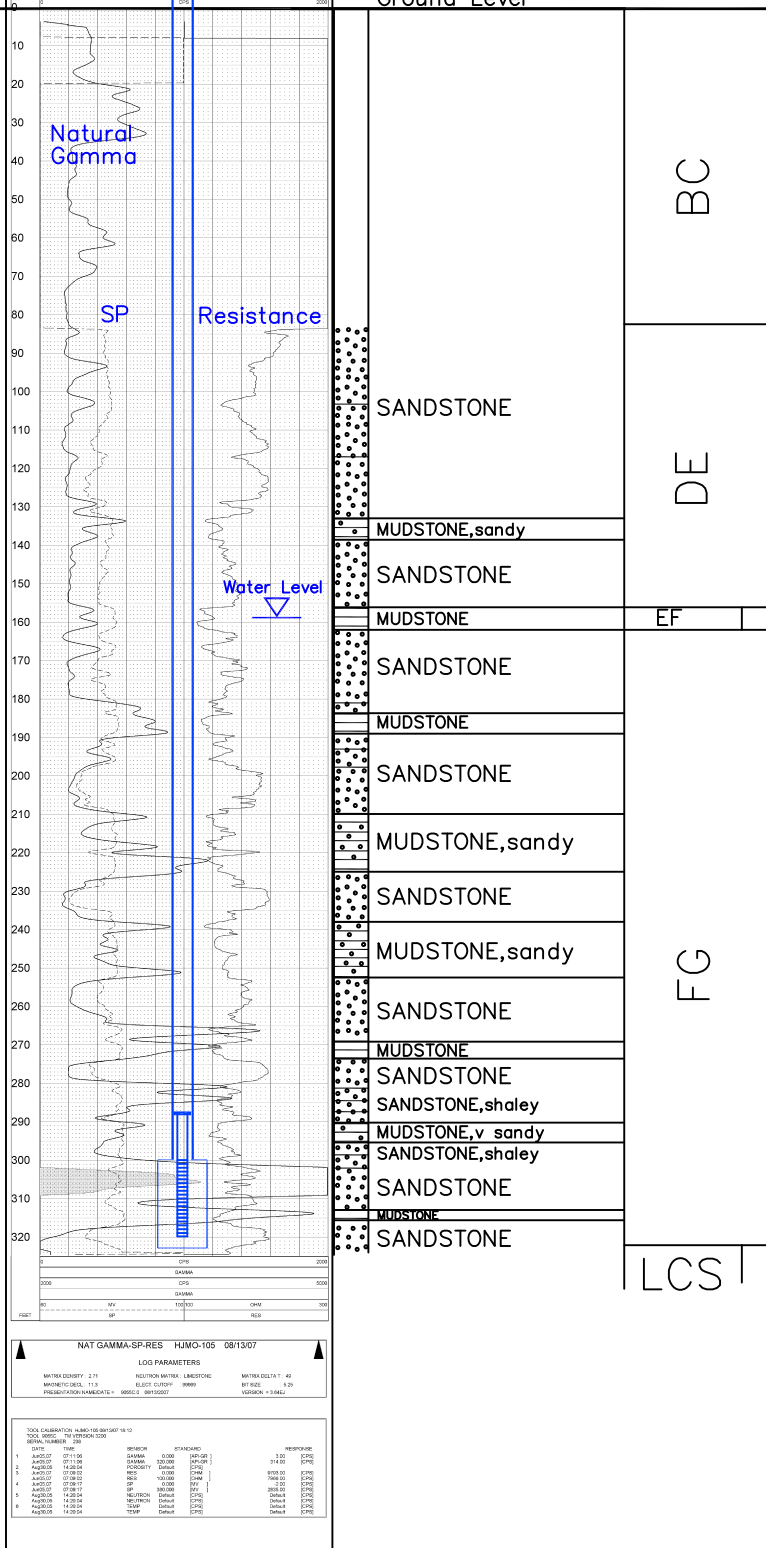
Method: N/A

WELL STIMULATION: Method Airlift

Yield: Good / Moderate / Poor

CENTRAL NAT GAMMA-SP-RES	
HJMO-105	
DATE: 08/13/07	
LOG NUMBER: 081307	
LOG PARAMETERS	
WATER DEPTH: 2.71	NEUTRON METER: LARGSTONE
WATER DEPTH: 11.0	SLIGHT CORRECT: 9999
WATER DEPTH: 11.0	WATER DELTA: 1.40
WATER DEPTH: 11.0	WATER DELTA: 1.40
WATER DEPTH: 11.0	WATER DELTA: 1.40

NAT GAMMA-SP-RES HJMO-105 081307	
LOG PARAMETERS	
WATER DEPTH: 2.71	NEUTRON METER: LARGSTONE
WATER DEPTH: 11.0	SLIGHT CORRECT: 9999
WATER DEPTH: 11.0	WATER DELTA: 1.40
WATER DEPTH: 11.0	WATER DELTA: 1.40
WATER DEPTH: 11.0	WATER DELTA: 1.40



HJMO-105