

# HJMO-108

## Lost Creek ISR, LLC WELL COMPLETION REPORT

HJMO-108

WELL # HJMO-108 SEO # 179886 Date Drilled: 8-2-07

Location: E 743,461 / N 535,298 (NAD 27)

Ground Elev: 6950.64' Measure Point Elev: 6951.64'

TD: 335' Hole Dia.: 7-7/8"

CASED to: 305' Casing: PVC SDR17 ID: 4.5" OD: 5"

GROUT: Portland Cement - Type I/II  
Pumped thru casing, displaced to surface with water

COMPLETION Aquifer: LFG Sand

Static Water Level: Depth 170' Elev: 6782' (avg.)

UNDERREAM: Blade Dia: 10.5"

Intervals: from 305' to 333' / length 28'  
from \_\_\_\_\_ to \_\_\_\_\_ / length \_\_\_\_\_

### SCREEN LINER ASSEMBLY

Description	Depth		Elev.		Length
	From - To	/ From - To	From - To	/ From - To	
K-packer	297'		6655'		
Screen	305' - 335'		6647' - 6617'		30'

### SCREEN SPECIFICATIONS:

Slot: 0.030" Composition 3" PVC

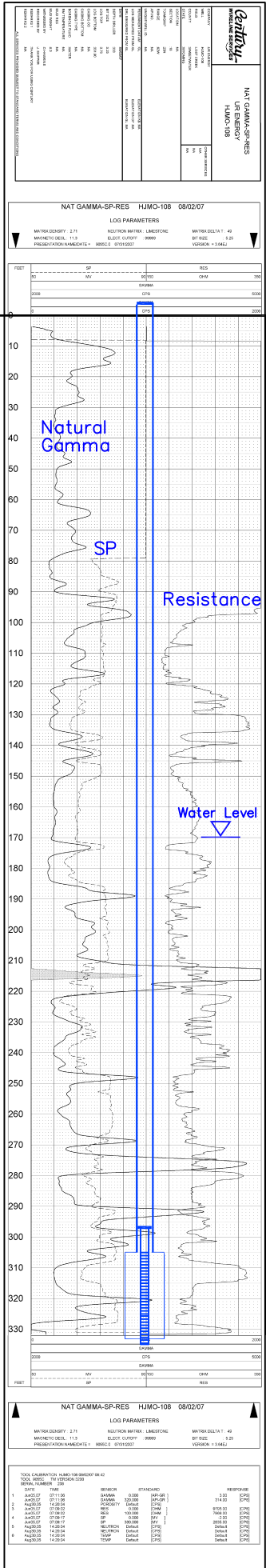
### FILTER PACKING:

Volume: \_\_\_\_\_ (bags)(ft<sup>3</sup>) Sand Specs. \_\_\_\_\_

Method: N/A

WELL STIMULATION: Method Airlift

Yield: Good / Moderate / Poor



Vertical Scale: 1"=50'

HJMO-108