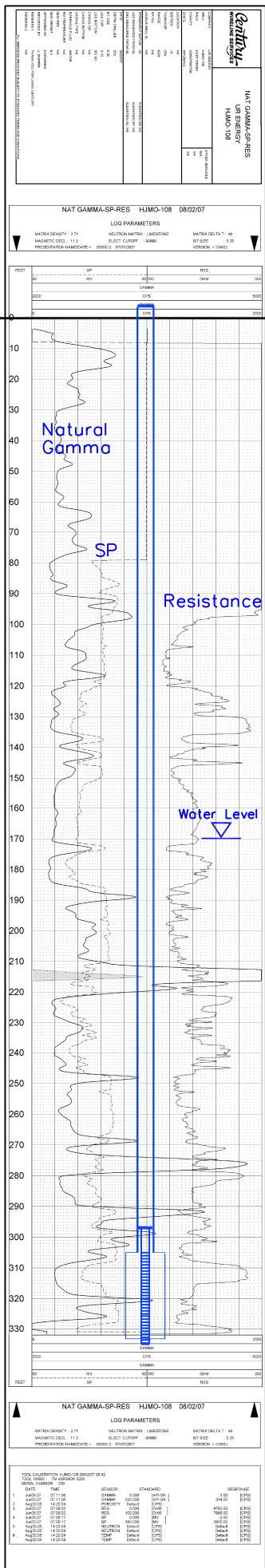


HJMO-108



Vertical Scale: 1"=50'

Lost Creek ISR, LLC WELL COMPLETION REPORT

WELL # HJMO-108 SEO # 179886 Date Drilled: 8-2-07

Location: E 743,461 / N 535,298 (NAD 27)

Ground Elev: 6950.64' Measure Point Elev: 6951.64'

TD: 335' Hole Dia.: 7-7/8"

CASED to: 305' Casing: PVC SDR17 ID: 4.5" OD: 5"

GROUT: Portland Cement – Type I/II
Pumped thru casing, displaced to surface with water

COMPLETION Aquifer: LFG Sand

Static Water Level: Depth 170' Elev: 6782' (avg.)

UNDERREAM: Blade Dia: 10.5"

Intervals: from 305' to 333' / length 28'

from _____ to _____ / length _____

SCREEN LINER ASSEMBLY

Description	Depth	Elev.	Length
	From – To	/ From – To	
K-packer	<u>297'</u>	<u>6655'</u>	
Screen	<u>305'</u> <u>335'</u>	<u>6647'</u> <u>6617'</u>	<u>30'</u>

SCREEN SPECIFICATIONS:

Slot: 0.020" Composition 3" PVC

FILTER PACKING:

Volume: _____ (bags)(ft³) Sand Specs. _____

Method: N/A

WELL STIMULATION: Method Airlift

Yield: Good / Moderate / Poor