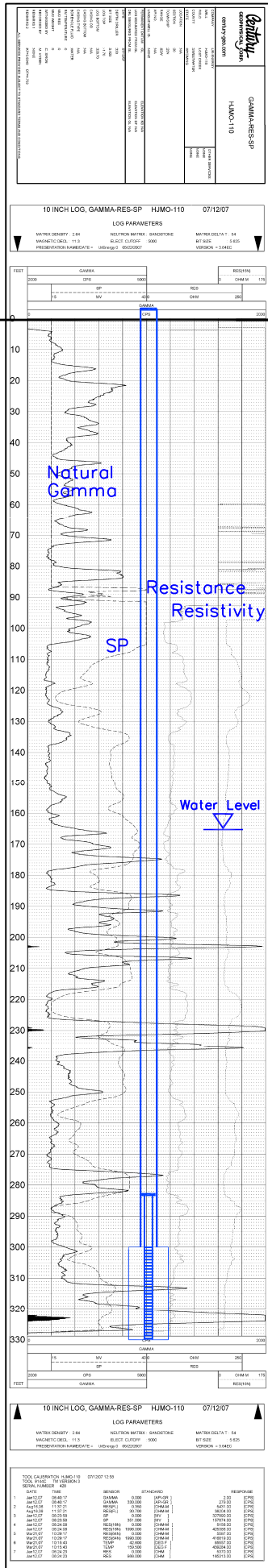


# HJMO-110

# Lost Creek ISR, LLC WELL COMPLETION REPORT



Ground Level

WELL # HJMO-110 SEO # 179892 Date Drilled: 7-12-07

Location: E 743,675 / N 535,194 (NAD 27)

Ground Elev: 6945.92' Measure Point Elev: 6947.13'

TD: 330' Hole Dia.: 7-7/8"

CASED to: 300' Casing: PVC SDR17 ID: 4.5" OD: 5"

GROUT: Portland Cement - Type I/II  
Pumped thru casing, displaced to surface with water

COMPLETION Aquifer: LFG Sand

Static Water Level: Depth 165' Elev: 6782' (avg.)

UNDERREAM: Blade Dia: 10.5"

Intervals: from 300' to 330' / length 30'  
from \_\_\_\_\_ to \_\_\_\_\_ / length \_\_\_\_\_

### SCREEN LINER ASSEMBLY

Description	Depth		Elev.		Length
	From	To	From	To	
K-packer	288'	6659'			
Screen	300'	330'	6647'	6617'	30'

### SCREEN SPECIFICATIONS:

Slot: 0.020" Composition 3" PVC

### FILTER PACKING:

Volume: \_\_\_\_\_ (bags)(ft<sup>3</sup>) Sand Specs. \_\_\_\_\_

Method: N/A

WELL STIMULATION: Method Airlift

Yield: Good / Moderate / Poor

Vertical Scale: 1"=50'

LCS