

# HJMP-104

## Lost Creek ISR, LLC WELL COMPLETION REPORT

WELL # HJMP-104 SEO # 179873 Date Drilled: 7-6-07

Location: E 742,886 / N 534,897 (NAD 27)

Ground Elev: 6939.04' Measure Point Elev: 6941.04'

TD: 432' Hole Dia.: 7-7/8"

CASED to: 402' Casing: PVC SDR17 ID: 4.5" OD: 5"

GROUT: Portland Cement - Type I/II

Pumped thru casing, displaced to surface with water

COMPLETION Aquifer: HJ Sand

Static Water Level: Depth 175' Elev: 6766' (avg.)

UNDERREAM: Blade Dia: 10.5"

Intervals: from 402' to 430' / length 25'

from \_\_\_\_\_ to \_\_\_\_\_ / length \_\_\_\_\_

### SCREEN LINER ASSEMBLY

Description	Depth		Elev.		Length
	From	To	From	To	
K-packer	396'	6545'			
Screen	402'	432'	6539'	6509'	30'

### SCREEN SPECIFICATIONS:

Slot: 0.030" Composition 3" PVC

### FILTER PACKING:

Volume: \_\_\_\_\_ (bags)(ft<sup>3</sup>) Sand Specs. \_\_\_\_\_

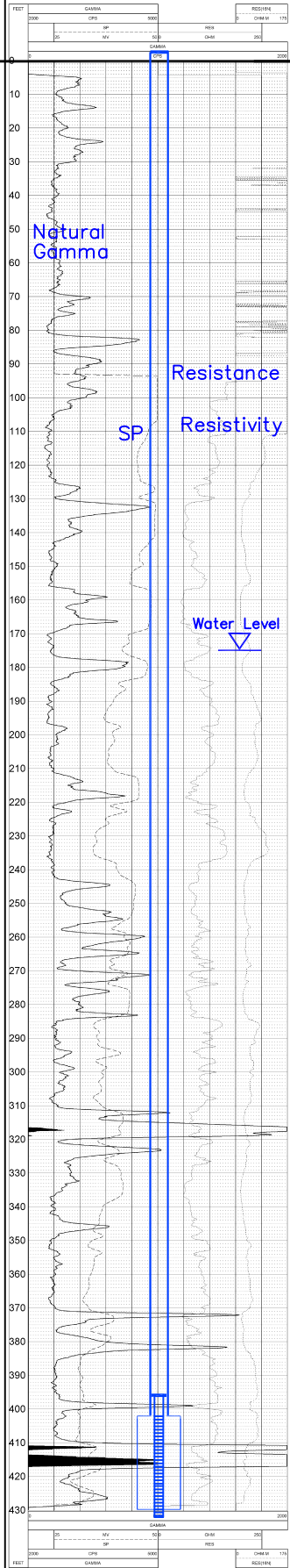
Method: N/A

WELL STIMULATION: Method Airlift

Yield: Good / Moderate / Poor

GAMMA-RES-SP	
HJMP-104	
LOG PARAMETERS	
MATRIX CORRECTED	RESISTIVITY
RESISTIVITY INDEX	RESISTIVITY INDEX
RESISTIVITY INDEX	RESISTIVITY INDEX

LOG PARAMETERS	
MATRIX CORRECTED	RESISTIVITY
RESISTIVITY INDEX	RESISTIVITY INDEX
RESISTIVITY INDEX	RESISTIVITY INDEX



LOG PARAMETERS	
MATRIX CORRECTED	RESISTIVITY
RESISTIVITY INDEX	RESISTIVITY INDEX
RESISTIVITY INDEX	RESISTIVITY INDEX

LOG PARAMETERS	
MATRIX CORRECTED	RESISTIVITY
RESISTIVITY INDEX	RESISTIVITY INDEX
RESISTIVITY INDEX	RESISTIVITY INDEX

## HJMP-104

Ground Level

No lithology data	BC
SANDSTONE	DE
MUDSTONE	
SANDSTONE	
MUDSTONE	EF
SANDSTONE	FG
MUDSTONE	
SANDSTONE	
MUDSTONE	
SANDSTONE, shaley	
MUDSTONE	
SANDSTONE	
MUDSTONE, sandy	LCS
SANDSTONE	
MUDSTONE	HJ
MUDSTONE	
SANDSTONE	