

# HJMP-109

## Lost Creek ISR, LLC WELL COMPLETION REPORT

WELL # HJMP-109 SEO # 179888 Date Drilled: 6-21-07

Location: E 743,895 / N 534,829 (NAD 27)

Ground Elev: 6937.89 Measure Point Elev: 6939.10

TD: 512 ft. Hole Dia.: 7-7/8"

CASED to: 478' Casing: PVC SDR17 ID: 4.5" OD: 5"

GROUT: Portland Cement – Type I/II  
Pumped thru casing, displaced to surface with water

COMPLETION Aquifer: HJ Sand

Static Water Level: Depth 185' Elev: 6754' (avg.)

UNDERREAM: Blade Dia: 10-1/2"

Intervals: from 478' to 512' / length 34'  
from \_\_\_\_\_ to \_\_\_\_\_ / length \_\_\_\_\_

### SCREEN LINER ASSEMBLY

Description	Depth	Elev.	Length
	From – To	From – To	
<u>K-packer</u>	<u>471'</u>	<u>6468'</u>	
<u>Screen</u>	<u>478' 508'</u>	<u>6461' 6431'</u>	<u>30'</u>

### SCREEN SPECIFICATIONS:

Slot: 0.030" Composition 3" PVC

### FILTER PACKING:

Volume: \_\_\_\_\_ (bags)(ft<sup>3</sup>) Sand Specs. \_\_\_\_\_  
Method: N/A

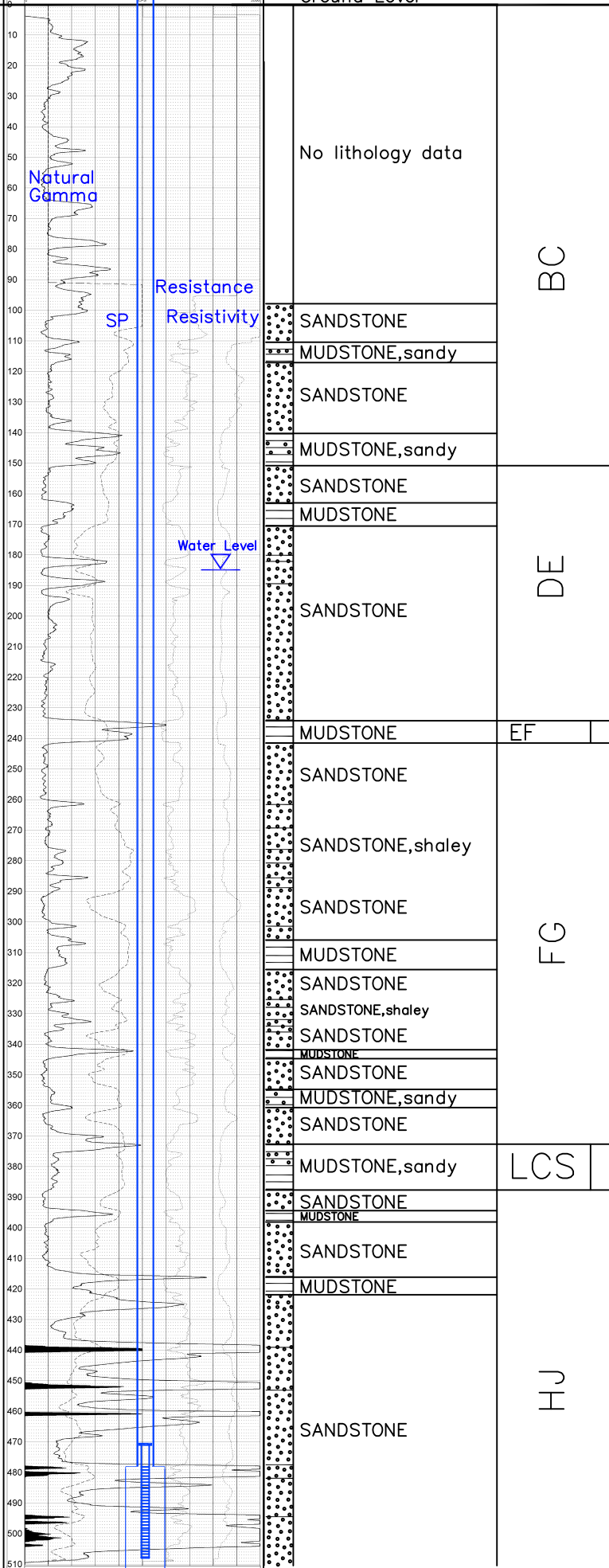
WELL STIMULATION: Method Airlift

Yield: Good / Moderate / Poor

<b>Gamma-Ray</b> GAMMA-RES-SP HJMP-109	
LOG PARAMETERS MATR DENSIY: 2.44 NEUTRON-MODR: SANDSTONE MATR DELTA T: 34 MAGNETIC DEL: 11.3 ELECT COROP: 880 SP RES: 5.29 PRES/TEMP/ANALYST: US/MS/11/06/08007 VER: 000001.1.0.000	10 INCH LOG, GAMMA-RES-SP HJMP-109 06/21/07 FEET 0 10 20 30 40 50 60 70 80 90 100 110 120 130 140 150 160 170 180 190 200 210 220 230 240 250 260 270 280 290 300 310 320 330 340 350 360 370 380 390 400 410 420 430 440 450 460 470 480 490 500 510 GAMA SP RES

## HJMP-109

Ground Level



<b>Gamma-Ray</b> GAMMA-RES-SP HJMP-109	
LOG PARAMETERS MATR DENSIY: 2.44 NEUTRON-MODR: SANDSTONE MATR DELTA T: 34 MAGNETIC DEL: 11.3 ELECT COROP: 880 SP RES: 5.29 PRES/TEMP/ANALYST: US/MS/11/06/08007 VER: 000001.1.0.000	10 INCH LOG, GAMMA-RES-SP HJMP-109 06/21/07 FEET 0 10 20 30 40 50 60 70 80 90 100 110 120 130 140 150 160 170 180 190 200 210 220 230 240 250 260 270 280 290 300 310 320 330 340 350 360 370 380 390 400 410 420 430 440 450 460 470 480 490 500 510 GAMA SP RES

Vertical Scale: 1"=50'

## HJMP-109