

Lost Creek ISR, LLC
WELL COMPLETION REPORT

HJMP-105

WELL # HJMP-105 SEO # 179876 Date Drilled: 9-5-07

Location: E 742,933 / N 535,073 (NAD 27)

Ground Elev: 6936.84 Measure Point Elev: 6937.38

TD: 460 ft. Hole Dia.: 7-7/8"

CASED to: 425' Casing: PVC SDR17 ID: 4.5" OD: 5"

GROUT: Portland Cement - Type I/II
 Pumped thru casing, displaced to surface with water

COMPLETION Aquifer: HJ Sand

Static Water Level: Depth 171' Elev: 6767' (avg.)

UNDERREAM: Blade Dia: 10-1/2"

Intervals: from 435' to 463' / length 28'
 from _____ to _____ / length _____

SCREEN LINER ASSEMBLY

Description	Depth		Elev.		Length
	From - To		From - To		
K-packer	410'		6521'		
Screen	425' - 465'		6512' - 6472'		40'

SCREEN SPECIFICATIONS:

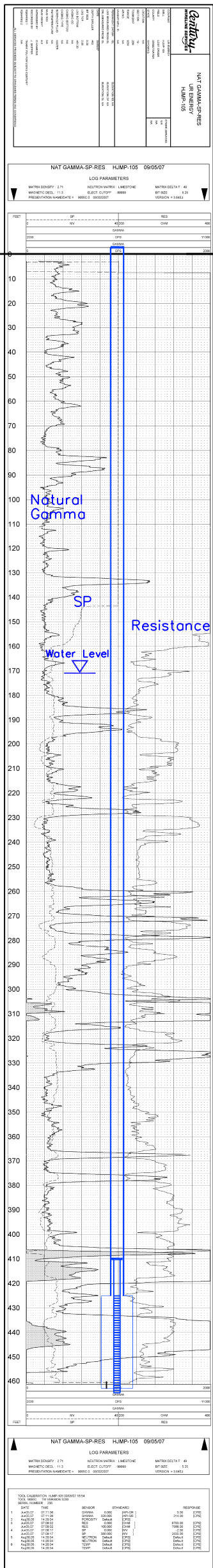
Slot: 0.020" Composition 3" PVC

FILTER PACKING:

Volume: _____ (bags)(ft³) Sand Specs. _____
 Method: N/A

WELL STIMULATION: Method Airlift

Yield: Good / Moderate / Poor



Vertical Scale: 1"=50'