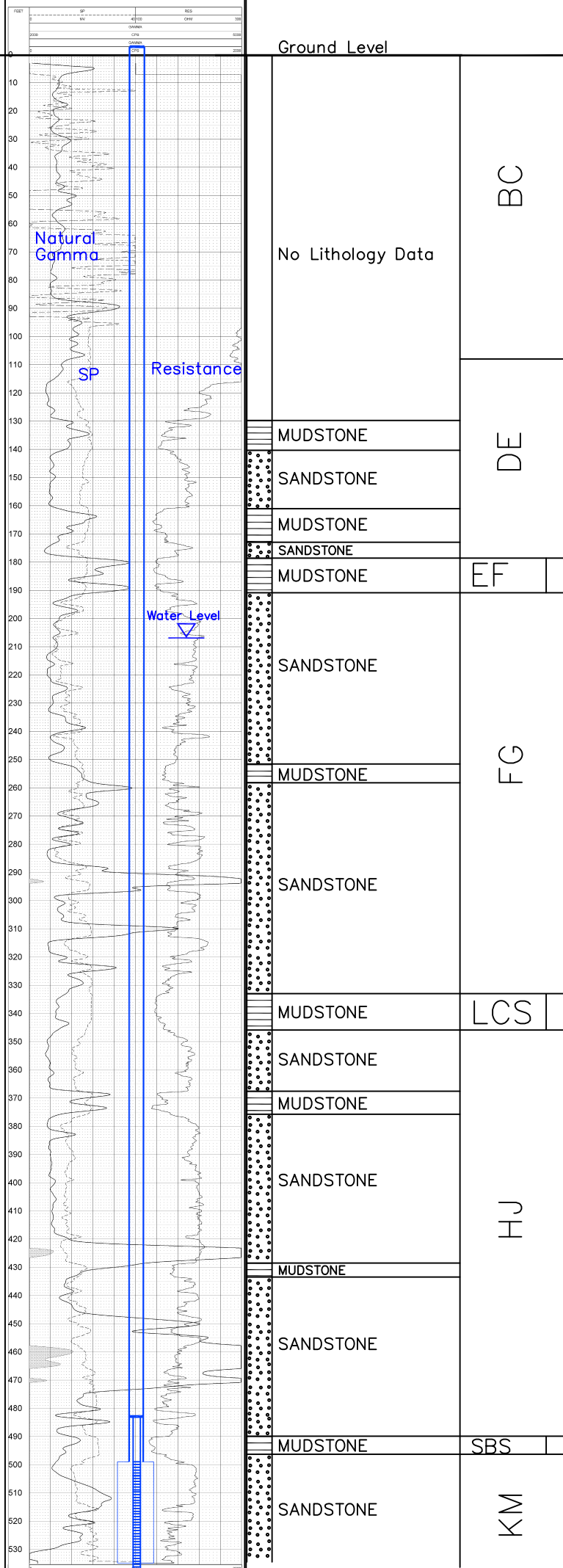


# HJMU-101

## Lost Creek ISR, LLC WELL COMPLETION REPORT

NAT GAMMA-SP-RES HJMU-101 07/30/07	
MATHEIDEPY: 2.71	RESISTIVITY: 1.00
RESISTIVITY: 1.00	RESISTIVITY: 1.00

HJMU-101



NAT GAMMA-SP-RES HJMU-101 07/30/07	
MATHEIDEPY: 2.71	RESISTIVITY: 1.00
RESISTIVITY: 1.00	RESISTIVITY: 1.00

Vertical Scale: 1"=50'

WELL # HJMU-101 SEO # 179863 Date Drilled: 7-30-07

Location: E 743,277 / N 531,997 (NAD 27)

Ground Elev: 6903.50 Measure Point Elev: 6904.71

TD: 535 ft. Hole Dia.: 7-7/8"

CASED to: 499' Casing: PVC SDR17 ID: 4.5" OD: 5"

GROUT: Portland Cement - Type I/II  
Pumped thru casing, displaced to surface with water

COMPLETION Aquifer: UKM Sand

Static Water Level: Depth 207' Elev: 6697'

UNDERREAM: Blade Dia: 10-1/2"

Intervals: from 499' to 535' / length 36'  
from \_\_\_\_\_ to \_\_\_\_\_ / length \_\_\_\_\_

### SCREEN LINER ASSEMBLY

Description	Depth		Elev.		Length
	From - To	/ From - To	From - To		
K-packer	483'		6421'		
Screen	499'	539'	6405'	6365'	40'

### SCREEN SPECIFICATIONS:

Slot: 0.030" Composition 3" PVC

### FILTER PACKING:

Volume: \_\_\_\_\_ (bags)(ft<sup>3</sup>) Sand Specs. \_\_\_\_\_

Method: N/A

WELL STIMULATION: Method Airlift

Yield: Good / Moderate / Poor

HJMU-101