

HJMU-108

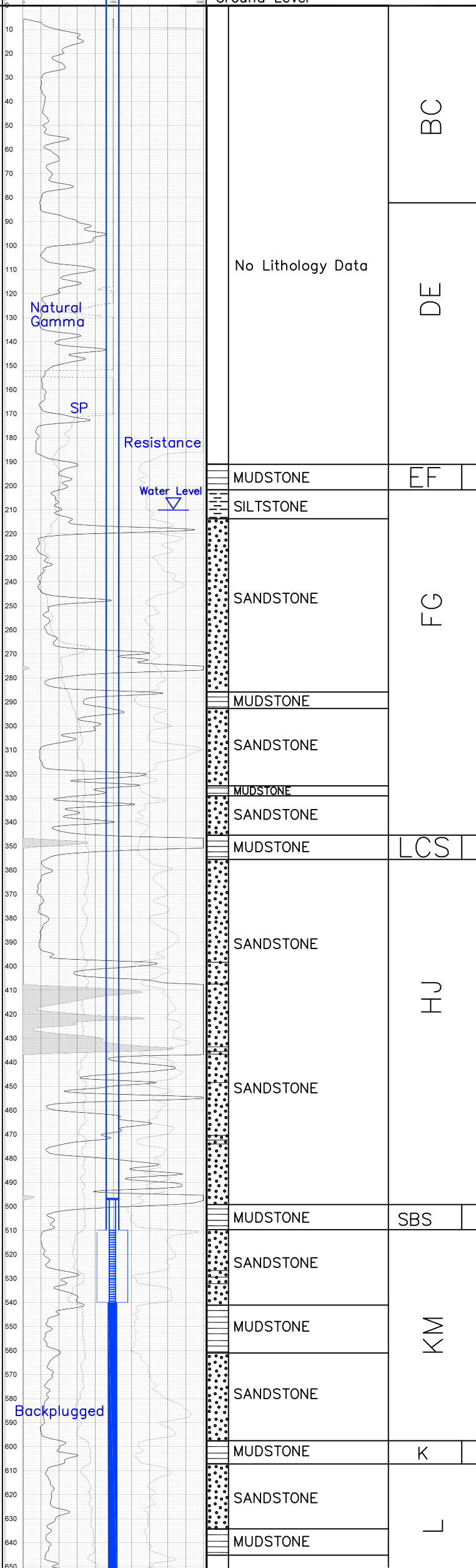
Lost Creek ISR, LLC WELL COMPLETION REPORT

Cathlog	
NAT GAMMA-SP-RES	
HJMU-108	

NAT GAMMA-SP-RES LOG HJMU-108 07/19/07		
LOG PARAMETERS		
WATER SENSITIVITY: 2.45	NEUTRON-MODERATED SANDSTONE	WATER DELTA T: .64
MAGNETIC DELTA: 0	ELECT. CLIFF: 2000	SP SCALE: 0.25
RESISTIVITY CORRECTION: 1.0000	RESISTIVITY: 1.0000	RESISTIVITY: 1.0000

HJMU-108

Ground Level



Vertical Scale: 1"=50'

TD 850

WELL # HJMU-108 SEO # 179884 Date Drilled: 7-19-07

Location: E 743,476 / N 535,299 (NAD 27)

Ground Elev: 6949.97' Measure Point Elev: 6951.51'

TD: 850' Hole Dia.: 7-7/8"

CASED to: 510' Casing: PVC SDR17 ID: 4.5" OD: 5"

GROUT: Portland Cement - Type I/II
Pumped thru casing, displaced to surface with water

COMPLETION Aquifer: UKM Sand

Static Water Level: Depth 210' Elev: 6741' (avg.)

UNDERREAM: Blade Dia: 10.5"

Intervals: from 510' to 540' / length 30'
from _____ to _____ / length _____

SCREEN LINER ASSEMBLY

Description	Depth	Elev.	Length
	From - To	/ From - To	
<u>K-packer</u>	<u>497'</u>	<u>6455'</u>	<u> </u>
<u>Screen</u>	<u>510' 540'</u>	<u>6442' 6412'</u>	<u>30'</u>

SCREEN SPECIFICATIONS:

Slot: 0.030" Composition 3" PVC

FILTER PACKING:

Volume: _____ (bags)(ft³) Sand Specs. _____
Method: N/A

WELL STIMULATION: Method Airlift

Yield: Good / Moderate / Poor

Pilot Hole BACKPLUGGED: 540'-850'

w/ BH Ultragrout slurry - 25% solids