

# HJMU-109

Lost Creek ISR, LLC

## WELL COMPLETION REPORT

HJMU-109

WELL # HJMU-109 SEO # 179887 Date Drilled: 5-24-07

Location: E 743,905 / N 534,835 (NAD 83)

Ground Elev: 6933.92 Measure Point Elev: 6939.38

TD: 850 ft. Hole Dia.: 7-7/8"

CASED to: 524' Casing: PVC SDR17 ID: 4.5" OD: 5"

GROUT: Portland Cement - Type I/II  
Pumped thru casing, displaced to surface with water

COMPLETION Aquifer: UKM Sand

Static Water Level: Depth 192' Elev: 6747'

UNDERREAM: Blade Dia: 10-1/2"

Intervals: from 524' to 574' /length 50'

from \_\_\_\_\_ to \_\_\_\_\_ /length \_\_\_\_\_

### SCREEN LINER ASSEMBLY

Description	Depth		Elev.		Length
	From - To	/ From - To	From - To		
K-packer	511'		6428'		
Screen	524' - 574'		6415' - 6365'		50'

### SCREEN SPECIFICATIONS:

Slot: 0.030" Composition 3" PVC

### FILTER PACKING:

Volume: \_\_\_\_\_ (bags)(ft<sup>3</sup>) Sand Specs. \_\_\_\_\_  
Method: N/A

WELL STIMULATION: Method Airlift

Yield: Good / Moderate / Poor

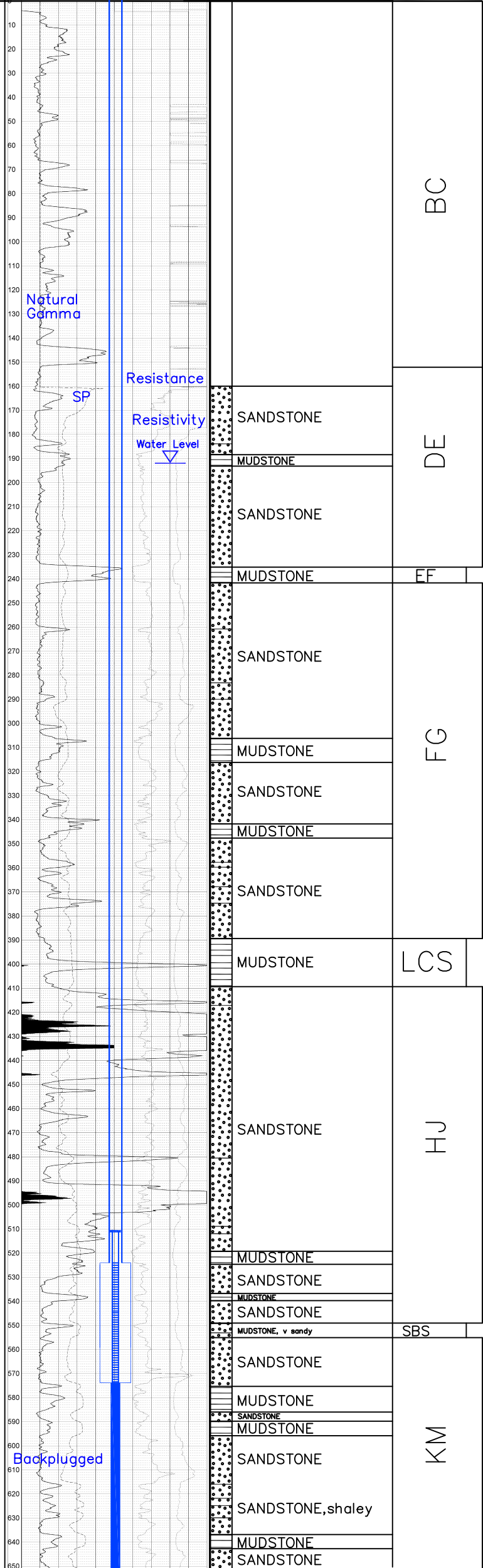
Pilot Hole BACKPLUGGED: 574'-850'

w/ BH Ultragrout slurry - 25% solids

HJMU-109

<b>Gamma-Ray</b> GAMMA-RAY-SP HJMU-109	
DATE: 05/24/07 LOG: 10 INCH LOG, GAMMA-RES-SP LOG: 10 INCH LOG, GAMMA-RES-SP LOG: 10 INCH LOG, GAMMA-RES-SP	LOG: 10 INCH LOG, GAMMA-RES-SP LOG: 10 INCH LOG, GAMMA-RES-SP LOG: 10 INCH LOG, GAMMA-RES-SP

LOG: 10 INCH LOG, GAMMA-RES-SP LOG: 10 INCH LOG, GAMMA-RES-SP LOG: 10 INCH LOG, GAMMA-RES-SP	LOG: 10 INCH LOG, GAMMA-RES-SP LOG: 10 INCH LOG, GAMMA-RES-SP LOG: 10 INCH LOG, GAMMA-RES-SP
--	--



Vertical Scale: 1"=50' — TD 850'