

HJMU-110

Lost Creek ISR, LLC WELL COMPLETION REPORT

WELL # HJMU-110 SEO # 179890 Date Drilled: 4-26-07

Location: E 743,685 / N 535,195 (NAD 27)

Ground Elev: 6945.97' Measure Point Elev: 6947.56'

TD: 850' Hole Dia.: 7-7/8"

CASED to: 492' Casing: PVC SDR17 ID: 4.5" OD: 5"

GROUT: Portland Cement – Type I/II
Pumped thru casing, displaced to surface with water

COMPLETION Aquifer: UKM Sand

Static Water Level: Depth 207' Elev: 6741' (avg.)

UNDERREAM: Blade Dia: 10.5"

Intervals: from 492' to 532' / length 40'

from _____ to _____ / length _____

SCREEN LINER ASSEMBLY

Description	Depth		Elev.		Length
	From	To	From	To	
K-packer	485'	6463'			
Screen	492'	537'	6456'	6411'	45'

SCREEN SPECIFICATIONS:

Slot: 0.030" Composition 3" PVC

FILTER PACKING:

Volume: _____ (bags)(ft³) Sand Specs. _____

Method: N/A

WELL STIMULATION: Method Airlift

Yield: Good / Moderate / Poor

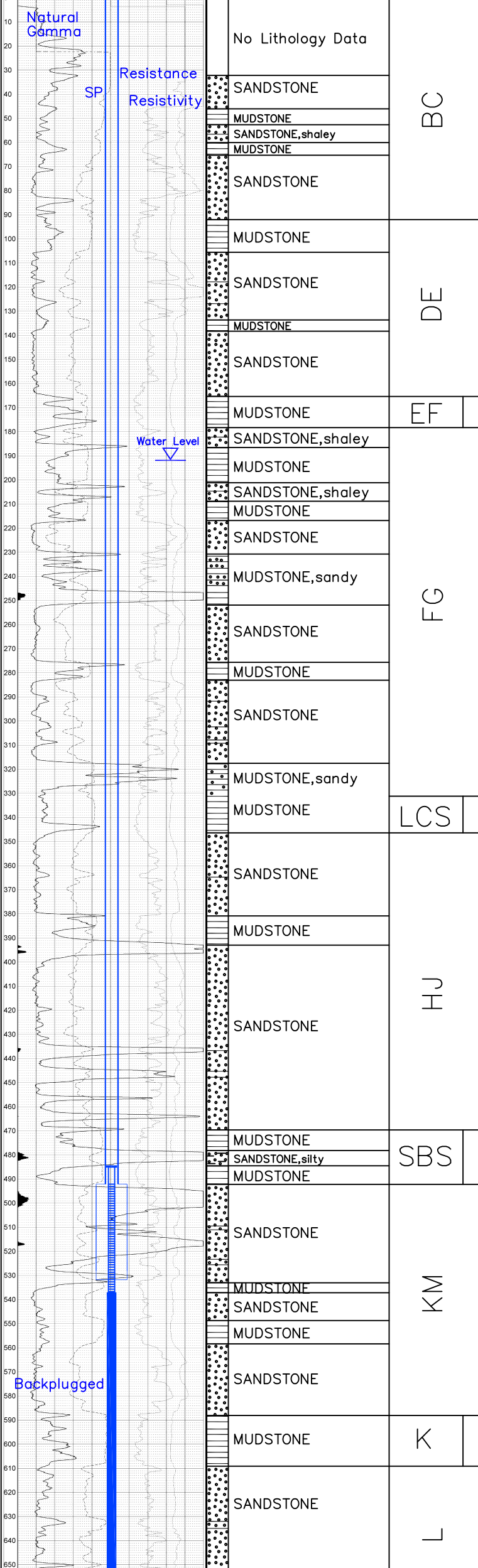
Pilot Hole BACKPLUGGED: 537'-850'

w/ BH Ultragrout slurry – 25% solids

GAMMA-RS-SP	
HJMU-110	
10 INCH LOG, GAMMA-RS-SP HJMU-110 04/26/07	
WATER DEPTH: 2.24	LOG PARAMETER
MAGNETIC DEVIATION: 11.3	ELECTRIC UNIT: SANDSTONE
RESISTIVITY UNIT: OHM-CM	BT SIZE: 100
	VERSION: 1.1A(02)

HJMU-110

Ground Level



Vertical Scale: 1"=50' ——— TD 850

HJMU-110