

Lost Creek ISR, LLC  
WELL COMPLETION REPORT

HJMU-104

WELL # HJMU-104 SEO # 179872 Date Drilled: 8-7-07

Location: E 742891 / N 534907 (NAD 27)

Ground Elev: 6939.01' Measure Point Elev: 6940.51'

TD: 550' Hole Dia.: 7-7/8"

CASED to: 512' Casing: PVC SDR17 ID: 4.5"OD: 5"

GROUT: Portland Cement – Type I/II  
 Pumped thru casing, displaced to surface with water

COMPLETION Aquifer: UKM Sand

Static Water Level: Depth 196' Elev: 6745' (avg.)

UNDERREAM: Blade Dia: 10.5"

Intervals: from 512' to 550' / length 38'  
 from \_\_\_\_\_ to \_\_\_\_\_ / length \_\_\_\_\_

SCREEN LINER ASSEMBLY

Description	Depth	Elev.	Length
	From – To	/ From – To	
K-packer	495	6446'	
Screen	512' – 552'	6429' – 6389'	40'

SCREEN SPECIFICATIONS:

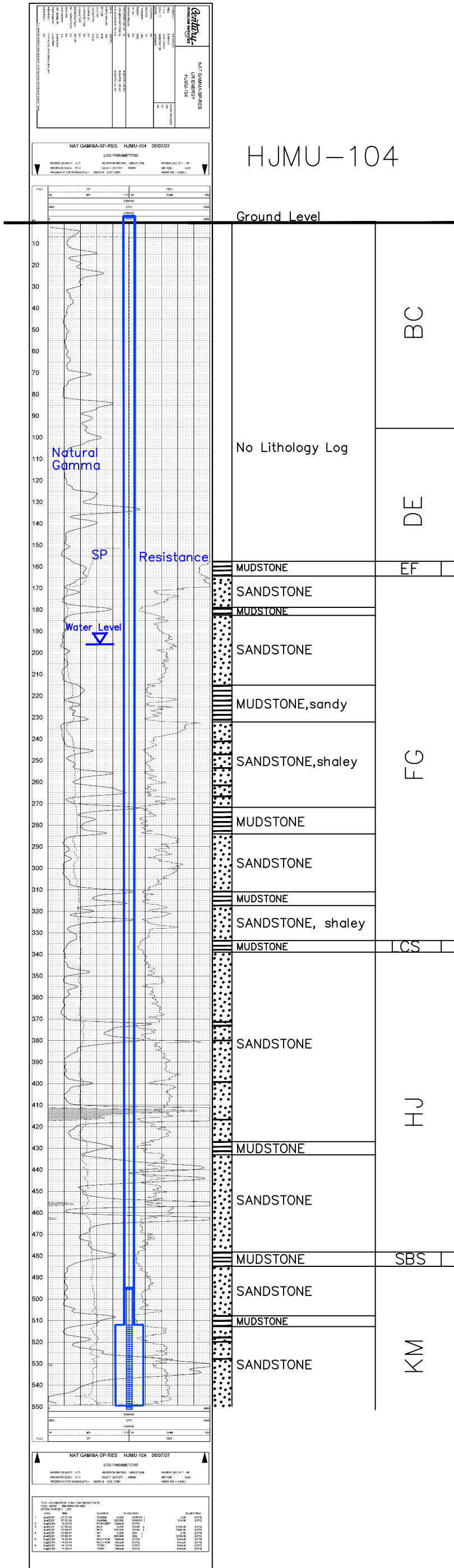
Slot: 0.030" Composition 3" PVC

FILTER PACKING:

Volume: \_\_\_\_\_ (bags)(ft<sup>3</sup>) Sand Specs. \_\_\_\_\_  
 Method: N/A

WELL STIMULATION: Method Airlift

Yield: Good / Moderate / Poor



Vertical Scale: 1"=50'

HJMU-104