

# HJMU-106 (MU-106)

## Lost Creek ISR, LLC WELL COMPLETION REPORT

WELL # HJMU-106 SEO # 179878 Date Drilled: 8-8-07

Location: E 743159 / N 535258 (NAD 27)

Ground Elev: 6940.59' Measure Point Elev: 6941.75'

TD: 550' Hole Dia.: 7-7/8"

CASED to: 500' Casing: PVC SDR17 ID: 4.5" OD: 5"

GROUT: Portland Cement - Type I/II  
Pumped thru casing, displaced to surface with water

COMPLETION Aquifer: UKM Sand

Static Water Level: Depth 201' Elev: 6741'

UNDERREAM: Blade Dia: 10.5"

Intervals: from 500' to 546' / length 46'  
from \_\_\_\_\_ to \_\_\_\_\_ / length \_\_\_\_\_

### SCREEN LINER ASSEMBLY

Description	Depth		Elev.		Length
	From - To		From - To		
<u>K-packer</u>	<u>483'</u>		<u>6459'</u>		
<u>Screen</u>	<u>500'</u>	<u>550'</u>	<u>6442'</u>	<u>6392'</u>	<u>50'</u>

### SCREEN SPECIFICATIONS:

Slot: 0.020" Composition 3" PVC

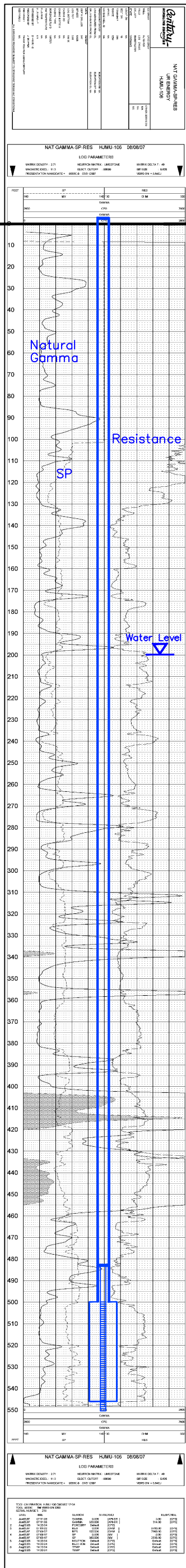
### FILTER PACKING:

Volume: \_\_\_\_\_ (bags)(ft<sup>3</sup>) Sand Specs. \_\_\_\_\_

Method: N/A

WELL STIMULATION: Method Airlift

Yield: Good / Moderate / Poor



Vertical Scale: 1"=50'