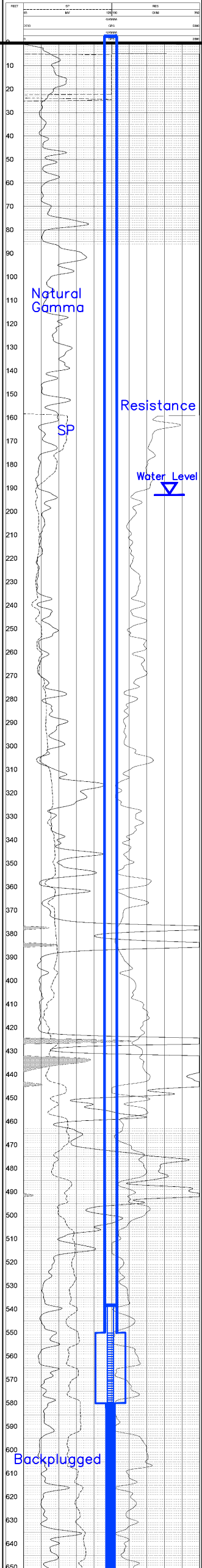


| | | | | | | | |
|------------------|--|------------------|--|----------|--|----------|--|
| CENTURY | | NAT GAMMA SP RES | | HJMU-107 | | 07/23/07 | |
| LOG PARAMETERS | | NAT GAMMA SP RES | | HJMU-107 | | 07/23/07 | |
| NAT GAMMA SP RES | | HJMU-107 | | 07/23/07 | | | |

HJMU-107
(MU-104)

Lost Creek ISR, LLC
WELL COMPLETION REPORT

| | | | | | | | |
|------------------|--|------------------|--|----------|--|----------|--|
| NAT GAMMA SP RES | | HJMU-107 | | 07/23/07 | | | |
| LOG PARAMETERS | | NAT GAMMA SP RES | | HJMU-107 | | 07/23/07 | |
| NAT GAMMA SP RES | | HJMU-107 | | 07/23/07 | | | |



Ground Level

WELL # HJMU-107 SEO # 179881 Date Drilled: 7-23-07

Location: E 743,686 / N 534,788 (NAD 83)

Ground Elev: 6936.84 Measure Point Elev: 6937.88

TD: 855 ft. Hole Dia.: 7-7/8"

CASED to: 550' Casing: PVC SDR17 ID: 4.5" OD: 5"

GROUT: Portland Cement - Type I/II
Pumped thru casing, displaced to surface with water

COMPLETION Aquifer: UKM Sand

Static Water Level: Depth 193' Elev: 6745'

UNDERREAM: Blade Dia: 10-1/2"

Intervals: from 550' to 580' /length 30'

from _____ to _____ /length _____

SCREEN LINER ASSEMBLY

| Description | Depth | Elev. | Length |
|-------------|--------------------|----------------------|------------|
| | From - To | From - To | |
| K-packer | <u>538'</u> | <u>6399</u> | |
| Screen | <u>550' - 580'</u> | <u>6387' - 6357'</u> | <u>30'</u> |
| | | | |
| | | | |

SCREEN SPECIFICATIONS:

Slot: 0.020" Composition 3" PVC

FILTER PACKING:

Volume: _____ (bags)(ft³) Sand Specs. _____

Method: N/A

WELL STIMULATION: Method Airlift

Yield: Good / Moderate / Poor

Pilot Hole BACKPLUGGED: 550'-855'

w/ BH Ultragrout slurry - 25% solids

Vertical Scale: 1"=50' TD 855