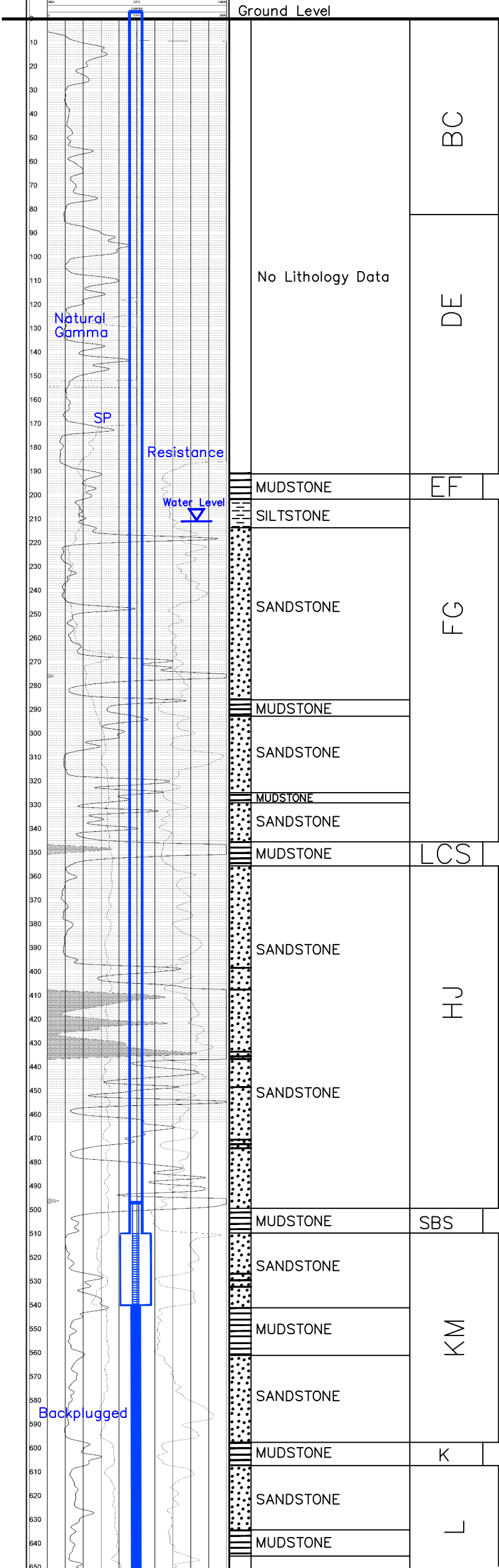


BENTONITE		DATE	
CEMENT		TIME	
FLUID LOSS		TEST	
GROUT		TYPE	
MATERIALS		SOURCE	
MIXTURE		RATIO	
PLACEMENT		METHOD	
CURE		CONDITIONS	
TESTS		RESULTS	
COMMENTS			

NAT GAMMA-SP-RES LOG HJMU-108 07/19/07	
LOG NUMBER	HJMU-108
DATE	07/19/07
WELL NAME	
LOG TYPE	
LOG SCALE	
LOG UNIT	
LOG INTERVAL	
LOG START	
LOG END	
LOG TOTAL	
LOG STATUS	
LOG COMMENTS	

HJMU-108

Lost Creek ISR, LLC
WELL COMPLETION REPORT



WELL # HJMU-108 SEO # 179884 Date Drilled: 7-19-07

Location: E 743,476 / N 535,299 (NAD 27)

Ground Elev: 6949.97' Measure Point Elev: 6951.51'

TD: 850' Hole Dia.: 7-7/8"

CASED to: 510' Casing: PVC SDR17 ID: 4.5" OD: 5"

GROUT: Portland Cement – Type I/II
 Pumped thru casing, displaced to surface with water

COMPLETION Aquifer: UKM Sand

Static Water Level: Depth 210' Elev: 6741' (avg.)

UNDERREAM: Blade Dia: 10.5"

Intervals: from 510' to 540' / length 30'
 from _____ to _____ / length _____

SCREEN LINER ASSEMBLY

Description	Depth	Elev.	Length
	From – To	/ From – To	
K-packer	497'	6455'	
Screen	510' – 540'	6442' – 6412'	30'

SCREEN SPECIFICATIONS:

Slot: 0.020" Composition 3" PVC

FILTER PACKING:

Volume: _____ (bags)(ft³) Sand Specs. _____
 Method: N/A

WELL STIMULATION: Method Airlift

Yield: Good / Moderate / Poor

Pilot Hole BACKPLUGGED: 540'–850'

w/ BH Ultragrout slurry – 25% solids

Vertical Scale: 1"=50'
 TD 850'