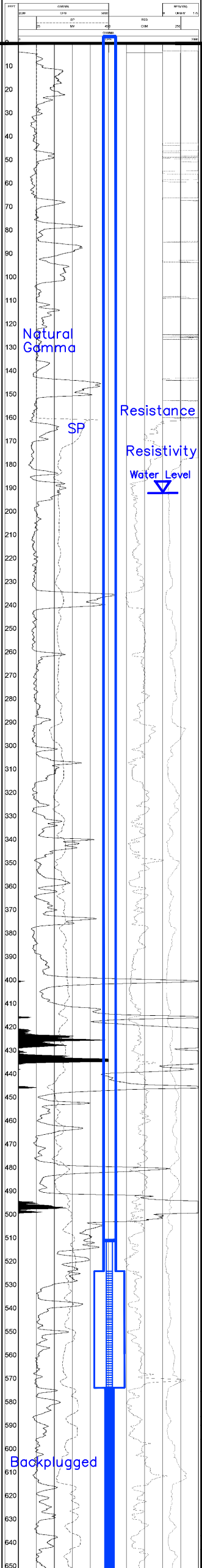


10 INCH LOG, GAMMA-RES-SP HJMU-109 052407

HJMU-109

# Lost Creek ISR, LLC WELL COMPLETION REPORT



Ground Level

WELL # HJMU-109 SEO # 179887 Date Drilled: 5-24-07

Location: E 743,905 / N 534,835 (NAD 83)

Ground Elev: 6933.92 Measure Point Elev: 6939.38

TD: 850 ft. Hole Dia.: 7-7/8"

CASED to: 524' Casing: PVC SDR17 ID: 4.5" OD: 5"

GROUT: Portland Cement – Type I/II  
Pumped thru casing, displaced to surface with water

COMPLETION Aquifer: UKM Sand

Static Water Level: Depth 192' Elev: 6747'

UNDERREAM: Blade Dia: 10-1/2"

Intervals: from 524' to 574' / length 50'

from \_\_\_\_\_ to \_\_\_\_\_ / length \_\_\_\_\_

## SCREEN LINER ASSEMBLY

Description	Depth		Elev.		Length
	From	To	From	To	
K-packer	511'	6428'			
Screen	524'	574'	6415'	6365'	50'

## SCREEN SPECIFICATIONS:

Slot: 0.020" Composition 3" PVC

## FILTER PACKING:

Volume: \_\_\_\_\_ (bags)(ft<sup>3</sup>) Sand Specs. \_\_\_\_\_  
Method: N/A

WELL STIMULATION: Method Airlift

Yield: Good / Moderate / Poor

Pilot Hole BACKPLUGGED: 574'-850'

w/ BH Ultragrout slurry – 25% solids

Vertical Scale: 1"=50'

TD 850