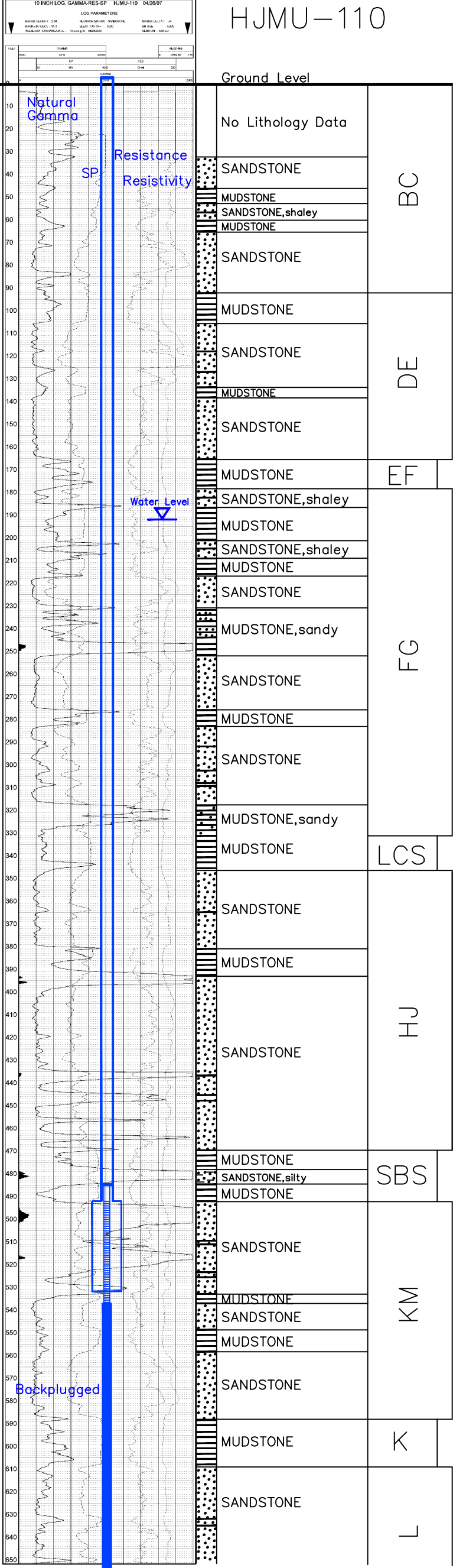


Gamma-Ray Log
 HJMU-110
 1-10-110

HJMU-110

Lost Creek ISR, LLC WELL COMPLETION REPORT



WELL # HJMU-110 SEO # 179890 Date Drilled: 4-26-07

Location: E 743,685 / N 535,195 (NAD 27)

Ground Elev: 6945.97' Measure Point Elev: 6947.56'

TD: 850' Hole Dia.: 7-7/8"

CASED to: 492' Casing: PVC SDR17 ID: 4.5" OD: 5"

GROUT: Portland Cement – Type I/II
 Pumped thru casing, displaced to surface with water

COMPLETION Aquifer: UKM Sand

Static Water Level: Depth 207' Elev: 6741' (avg.)

UNDERREAM: Blade Dia: 10.5"

Intervals: from 492' to 532' / length 40'
 from _____ to _____ / length _____

SCREEN LINER ASSEMBLY

Description	Depth		Elev.		Length
	From	To	From	To	
K-packer		<u>485'</u>		<u>6463'</u>	
Screen	<u>492'</u>	<u>537'</u>	<u>6456'</u>	<u>6411'</u>	<u>45'</u>

SCREEN SPECIFICATIONS:

Slot: 0.020" Composition 3" PVC

FILTER PACKING:

Volume: _____ (bags)(ft³) Sand Specs. _____

Method: N/A

WELL STIMULATION: Method Airlift

Yield: Good / Moderate / Poor

Pilot Hole BACKPLUGGED: 537'-850'

w/ BH Ultragrout slurry – 25% solids

Vertical Scale: 1"=50'
 TD 850