

Company
GAMMA-RES-SP

LOG PARAMETERS

10 INCH LOG, GAMMA-RES-SP HJMU-111 042407

WATER DENSITY: 1.04
MUD WEIGHT: 11.8
MUD VOLUME: 0.0000
MUD GRAVITY: 1.14

LOG PARAMETERS

LOG DATE: 04/24/07
LOG TIME: 08:00
LOG BY: J. J. J.

HJMU-111 (MU-105)

Lost Creek ISR, LLC WELL COMPLETION REPORT

WELL # HJMU-111 SEO # 179893 Date Drilled: 4-24-07

Location: E 743,841 / N 535,374 (NAD 27)

Ground Elev: 6948.93 Measure Point Elev: 6950.08

TD: 853 ft. Hole Dia.: 7-7/8"

CASED to: 507' Casing: PVC SDR17 ID: 4.5" OD: 5"

GROUT: Portland Cement - Type I/II
Pumped thru casing, displaced to surface with water

COMPLETION Aquifer: UKM Sand

Static Water Level: Depth 209' Elev: 6741'

UNDERREAM: Blade Dia: 10-1/2"

Intervals: from 507' to 545' / length 38'
from _____ to _____ / length _____

SCREEN LINER ASSEMBLY

Description	Depth	Elev.	Length
	From - To	/ From - To	
K-packer	492'	6458'	
Screen	507' - 547'	6443' - 6403'	40'

SCREEN SPECIFICATIONS:

Slot: 0.020" Composition 3" PVC

FILTER PACKING:

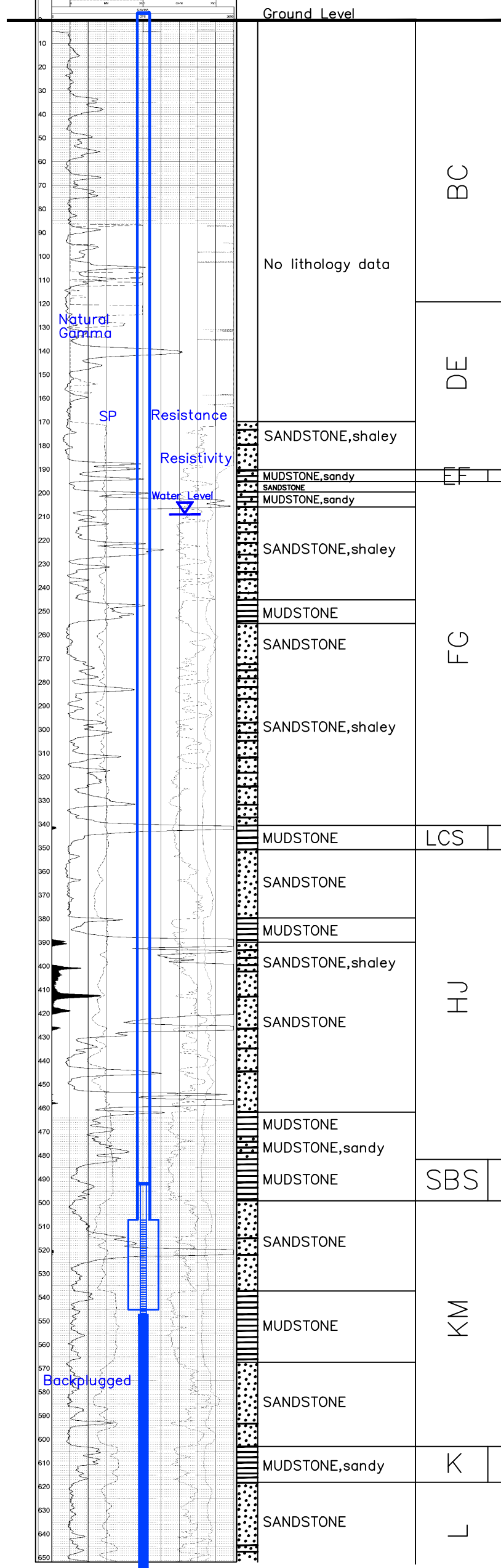
Volume: _____ (bags)(ft³) Sand Specs. _____
Method: N/A

WELL STIMULATION: Method Airlift

Yield: Good / Moderate / Poor

Pilot Hole BACKPLUGGED: 547'-850'

w/ BH Ultragrout slurry - 25% solids



Vertical Scale: 1"=50'