

Company QAMVA-RES-SP HJMU-113	
10 INCH LOG, GAMMA-RES-SP HJMU-113 060407	LOG PARAMETERS MATRIX CORRECTED: 0.04 NATURAL GAMMA: 0.15 RESISTIVITY: 1.00 SP: 1.00 WATER DELTA T: 0.4 RESISTIVITY: 1.00 SP: 1.00

HJMU-113

Lost Creek ISR, LLC
WELL COMPLETION REPORT

WELL # HJMU-113 SEO # 179899 Date Drilled: 6-4-07

Location: E 744,277 / N 534,807 (NAD 27)

Ground Elev: 6935.16 Measure Point Elev: 6936.99

TD: 800 ft. Hole Dia.: 7-7/8"

CASED to: 524' Casing: PVC SDR17 ID: 4.5" OD: 5"

GROUT: Portland Cement – Type I/II
 Pumped thru casing, displaced to surface with water

COMPLETION Aquifer: UKM Sand

Static Water Level: Depth 188' Elev: 6749' (avg.)

UNDERREAM: Blade Dia: 10-1/2"

Intervals: from 524' to 555' / length 31'
 from _____ to _____ / length _____

SCREEN LINER ASSEMBLY

Description	Depth		Elev.		Length
	From	To	From	To	
K-packer	512'	6424'			
Screen	524'	554'	6412'	6382'	30'

SCREEN SPECIFICATIONS:

Slot: 0.020" Composition 3" PVC

FILTER PACKING:

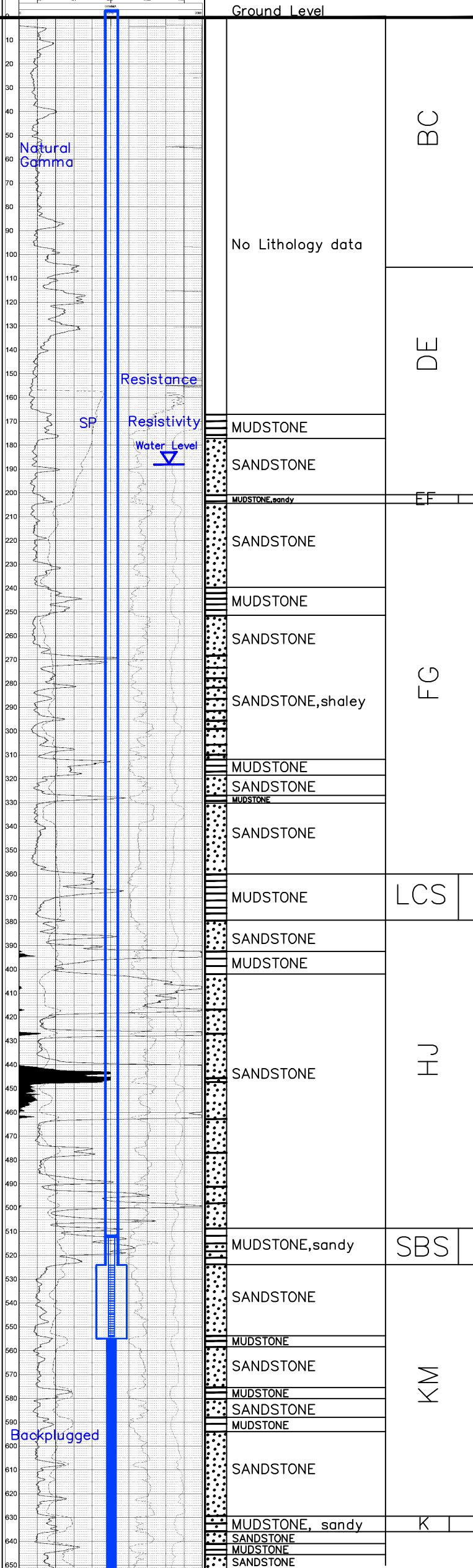
Volume: _____ (bags)(ft³) Sand Specs. _____
 Method: N/A

WELL STIMULATION: Method Airlift

Yield: Good / Moderate / Poor

Pilot Hole BACKPLUGGED: 555'-800'

w/ BH Ultragrout slurry – 25% solids



Vertical Scale: 1"=50'

TD 800