

10 INCH LOG, GAMMA, RES, SP HJMU-114 07/04/07

LOG PARAMETERS

WELL ID: HJMU-114

DATE: 07/04/07

HJMU-114 (MU-102)

Lost Creek ISR, LLC WELL COMPLETION REPORT

WELL # HJMU-114 SEO # 179902 Date Drilled: 7-4-07

Location: E 744,966 / N 534,678 (NAD 27)

Ground Elev: 6939.10' Measure Point Elev: 6940.43'

TD: 557' Hole Dia.: 7-7/8"

CASED to: 525' Casing: PVC SDR17 ID: 4.5" OD: 5"

GROUT: Portland Cement – Type I/II
Pumped thru casing, displaced to surface with water

COMPLETION Aquifer: UKM Sand

Static Water Level: Depth 190' Elev: 6750' (avg.)

UNDERREAM: Blade Dia: 10.5"
Intervals: from 525' to 553' / length 28'
from _____ to _____ / length _____

SCREEN LINER ASSEMBLY

Description	Depth	Elev.	Length
	From – To	From – To	
K-packer	512'	6428'	
Screen	525' – 555'	6415' – 6385'	30'

SCREEN SPECIFICATIONS:

Slot: 0.020" Composition 3" PVC

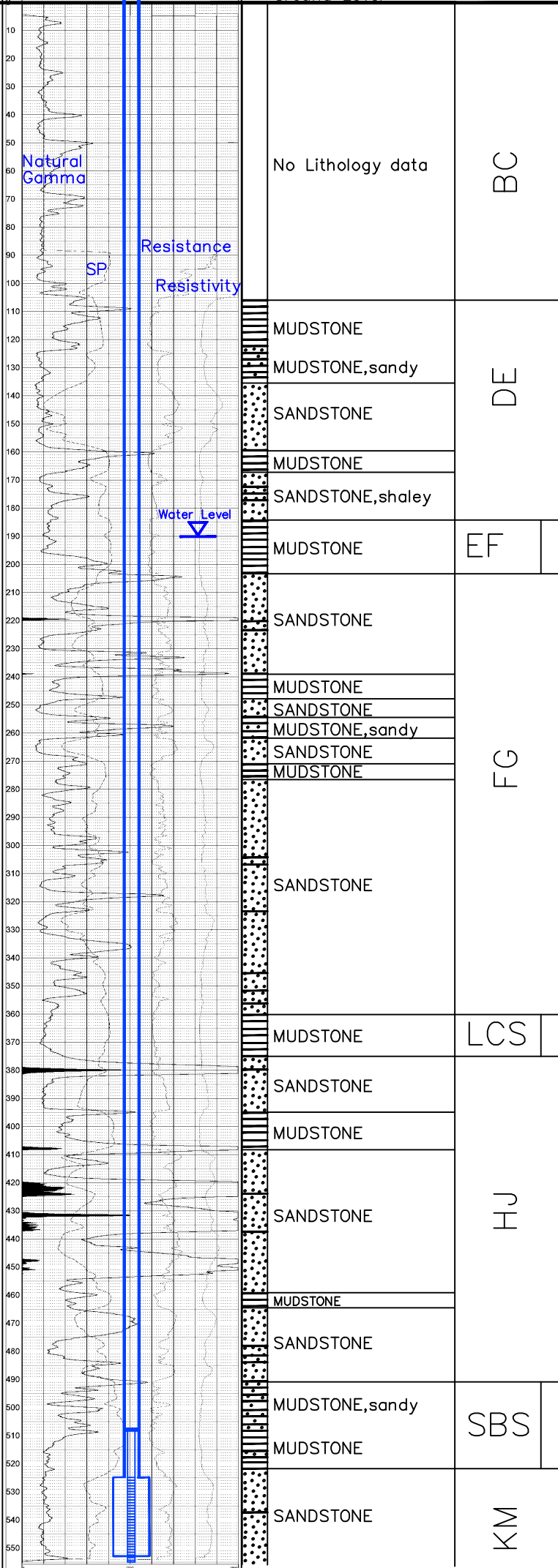
FILTER PACKING:

Volume: _____ (bags)(ft³) Sand Specs. _____
Method: N/A

WELL STIMULATION: Method Airlift

Yield: Good / Moderate / Poor

Ground Level



10 INCH LOG, GAMMA, RES, SP HJMU-114 07/04/07

LOG PARAMETERS

WELL ID: HJMU-114

DATE: 07/04/07

Vertical Scale: 1"=50'