

# HJT-101

Lost Creek ISR, LLC

## WELL COMPLETION REPORT

### HJT-101

WELL # HJT-101 SEO # 179856 Date Drilled: 8-10-07

Location: E 742,561 / N 534,610 (NAD 27)

Ground Elev: 6937.12 Measure Point Elev: 6937.56

TD: 478 ft. Hole Dia.: 7-7/8"

CASED to: 437' Casing: PVC SDR17 ID: 4.5" OD: 5"

GROUT: Portland Cement – Type I/II  
Pumped thru casing, displaced to surface with water

COMPLETION Aquifer: HJ Sand

Static Water Level: Depth 176' Elev: 6762' (avg.)

UNDERREAM: Blade Dia: 10-1/2"

Intervals: from 437' to 477' /length 40'  
from \_\_\_\_\_ to \_\_\_\_\_ /length \_\_\_\_\_

### SCREEN LINER ASSEMBLY

| Description | Depth            | Elev.              | Length     |
|-------------|------------------|--------------------|------------|
|             | From – To        | From – To          |            |
| K-packer    | <u>424'</u>      | <u>6514'</u>       |            |
| Screen      | <u>437' 477'</u> | <u>6501' 6461'</u> | <u>40'</u> |
|             |                  |                    |            |
|             |                  |                    |            |

### SCREEN SPECIFICATIONS:

Slot: 0.030" Composition 3" PVC

### FILTER PACKING:

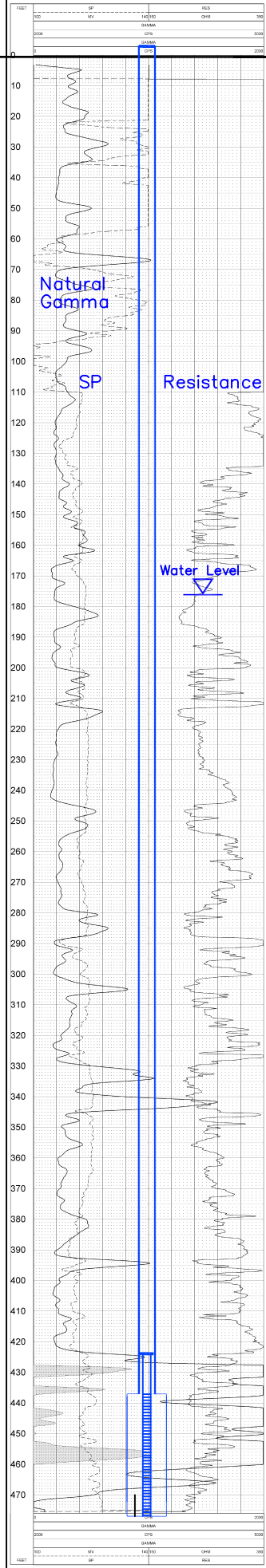
Volume: \_\_\_\_\_ (bags)(ft<sup>3</sup>) Sand Specs. \_\_\_\_\_  
Method: N/A

WELL STIMULATION: Method Airlift

Yield: Good / Moderate / Poor

| NAT GAMMA-SP-RES HJT-101 08/10/07 |                          |
|-----------------------------------|--------------------------|
| LOG PARAMETERS                    | LOG PARAMETERS           |
| MAGNETIC DEVIATION: 11.5          | RESISTIVITY UNIT: OHM CM |
| RESISTIVITY UNIT: OHM CM          | RESISTIVITY UNIT: OHM CM |
| RESISTIVITY UNIT: OHM CM          | RESISTIVITY UNIT: OHM CM |

| NAT GAMMA-SP-RES HJT-101 08/10/07 |                          |
|-----------------------------------|--------------------------|
| LOG PARAMETERS                    | LOG PARAMETERS           |
| MAGNETIC DEVIATION: 11.5          | RESISTIVITY UNIT: OHM CM |
| RESISTIVITY UNIT: OHM CM          | RESISTIVITY UNIT: OHM CM |
| RESISTIVITY UNIT: OHM CM          | RESISTIVITY UNIT: OHM CM |



| NAT GAMMA-SP-RES HJT-101 08/10/07 |                          |
|-----------------------------------|--------------------------|
| LOG PARAMETERS                    | LOG PARAMETERS           |
| MAGNETIC DEVIATION: 11.5          | RESISTIVITY UNIT: OHM CM |
| RESISTIVITY UNIT: OHM CM          | RESISTIVITY UNIT: OHM CM |
| RESISTIVITY UNIT: OHM CM          | RESISTIVITY UNIT: OHM CM |

| TOOL CALIBRATION HJT-101 08/10/07 |          |       |             |             |             |
|-----------------------------------|----------|-------|-------------|-------------|-------------|
| DATE                              | TIME     | DEPTH | RESISTIVITY | RESISTIVITY | RESISTIVITY |
| 1                                 | 08/10/07 | 0     | 1000        | 1000        | 1000        |
| 2                                 | 08/10/07 | 10    | 1000        | 1000        | 1000        |
| 3                                 | 08/10/07 | 20    | 1000        | 1000        | 1000        |
| 4                                 | 08/10/07 | 30    | 1000        | 1000        | 1000        |
| 5                                 | 08/10/07 | 40    | 1000        | 1000        | 1000        |
| 6                                 | 08/10/07 | 50    | 1000        | 1000        | 1000        |
| 7                                 | 08/10/07 | 60    | 1000        | 1000        | 1000        |
| 8                                 | 08/10/07 | 70    | 1000        | 1000        | 1000        |
| 9                                 | 08/10/07 | 80    | 1000        | 1000        | 1000        |
| 10                                | 08/10/07 | 90    | 1000        | 1000        | 1000        |

Vertical Scale: 1"=50'