

HJT-103

HJT-103

Lost Creek ISR, LLC WELL COMPLETION REPORT

WELL # HJT-103 SEO # 179858 Date Drilled: 8-14-07

Location: E 743,180 / N 534,670 (NAD 27)

Ground Elev: 6937.56 Measure Point Elev: 6938.22

TD: 450 ft. Hole Dia.: 7-7/8"

CASED to: 423' Casing: PVC SDR17 ID: 4.5" OD: 5"

GROUT: Portland Cement – Type I/II
Pumped thru casing, displaced to surface with water

COMPLETION Aquifer: HJ Sand

Static Water Level: Depth 190' Elev: 6748' (avg.)

UNDERREAM: Blade Dia: 10-1/2"

Intervals: from 423' to 450' / length 27'
from _____ to _____ / length _____

SCREEN LINER ASSEMBLY

Description	Depth		Elev.		Length
	From	To	From	To	
K-packer	407'		6531'		
Screen	423'	450'	6515'	6488'	27'

SCREEN SPECIFICATIONS:

Slot: 0.020" Composition 3" PVC

FILTER PACKING:

Volume: _____ (bags)(ft³) Sand Specs. _____

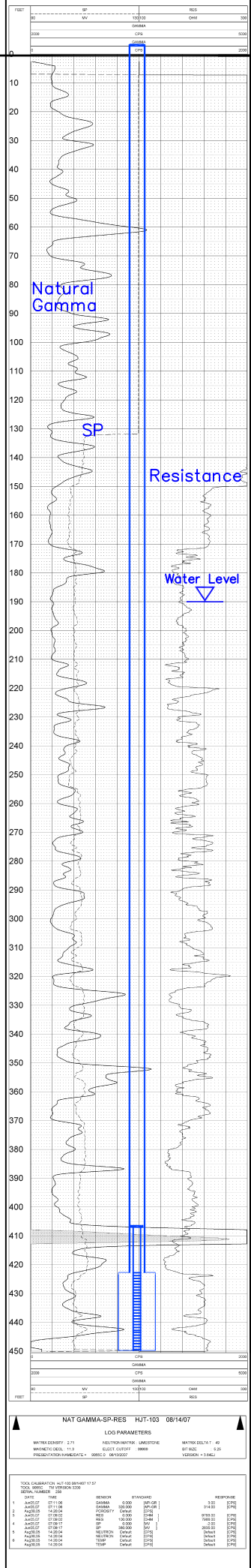
Method: N/A

WELL STIMULATION: Method Airlift

Yield: Good / Moderate / Poor

NAT GAMMA-RES	
HJT-103	
DATE: 08/14/07	
LOG PARAMETERS	
MATNO: 271	RESISTIVITY: 1000
MATNO: 113	RESISTIVITY: 1000
MATNO: 113	RESISTIVITY: 1000
MATNO: 113	RESISTIVITY: 1000

NAT GAMMA-RES HJT-103 08/14/07	
LOG PARAMETERS	
MATNO: 271	RESISTIVITY: 1000
MATNO: 113	RESISTIVITY: 1000
MATNO: 113	RESISTIVITY: 1000
MATNO: 113	RESISTIVITY: 1000



Vertical Scale: 1"=50'