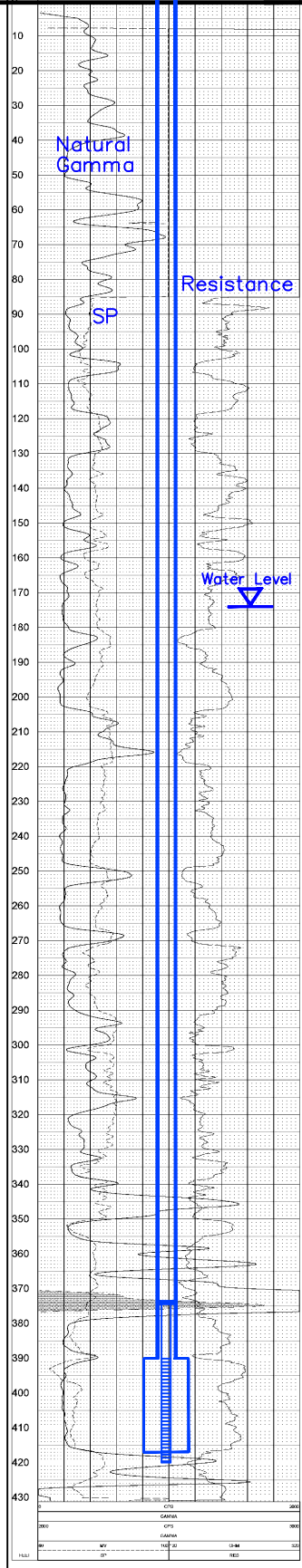


| | |
|--------------------------|--------------------------|
| Gentiva | |
| NAT GAMMA-SP-RES | |
| HJT-102 | |
| 08/06/07 | |
| LOG PARAMETERS | |
| MARKER DEPTH: 1.0 | RESISTIVITY UNIT: OHM-CM |
| MARKER ELEV: 11.0 | SP LOG: 5000 |
| RESISTIVITY UNIT: OHM-CM | SP LOG: 5000 |

| | |
|-----------------------------------|--------------------------|
| NAT GAMMA-SP-RES HJT-102 08/06/07 | |
| LOG PARAMETERS | |
| MARKER DEPTH: 1.0 | RESISTIVITY UNIT: OHM-CM |
| MARKER ELEV: 11.0 | SP LOG: 5000 |
| RESISTIVITY UNIT: OHM-CM | SP LOG: 5000 |

| | |
|-----------------------------------|--------------------------|
| NAT GAMMA-SP-RES HJT-102 08/06/07 | |
| LOG PARAMETERS | |
| MARKER DEPTH: 1.0 | RESISTIVITY UNIT: OHM-CM |
| MARKER ELEV: 11.0 | SP LOG: 5000 |
| RESISTIVITY UNIT: OHM-CM | SP LOG: 5000 |



| | |
|-----------------------------------|--------------------------|
| NAT GAMMA-SP-RES HJT-102 08/06/07 | |
| LOG PARAMETERS | |
| MARKER DEPTH: 1.0 | RESISTIVITY UNIT: OHM-CM |
| MARKER ELEV: 11.0 | SP LOG: 5000 |
| RESISTIVITY UNIT: OHM-CM | SP LOG: 5000 |

| | |
|-----------------------------------|--------------------------|
| NAT GAMMA-SP-RES HJT-102 08/06/07 | |
| LOG PARAMETERS | |
| MARKER DEPTH: 1.0 | RESISTIVITY UNIT: OHM-CM |
| MARKER ELEV: 11.0 | SP LOG: 5000 |
| RESISTIVITY UNIT: OHM-CM | SP LOG: 5000 |

Vertical Scale: 1"=50'

HJT-102

Ground Level

| | | | |
|-----|--------------------|--|--|
| 10 | | | |
| 20 | | | |
| 30 | | | |
| 40 | | | |
| 50 | | | |
| 60 | | | |
| 70 | | | |
| 80 | | | |
| 90 | | | |
| 100 | SANDSTONE | | |
| 105 | MUDSTONE | | |
| 110 | SANDSTONE | | |
| 115 | MUDSTONE | | |
| 120 | | | |
| 130 | | | |
| 140 | SANDSTONE | | |
| 150 | | | |
| 160 | | | |
| 170 | | | |
| 174 | Water Level | | |
| 180 | MUDSTONE | | |
| 190 | SANDSTONE | | |
| 200 | | | |
| 210 | MUDSTONE | | |
| 220 | | | |
| 230 | SANDSTONE | | |
| 240 | | | |
| 250 | MUDSTONE | | |
| 260 | SANDSTONE | | |
| 270 | MUDSTONE | | |
| 280 | SANDSTONE | | |
| 290 | | | |
| 300 | MUDSTONE, sandy | | |
| 310 | SANDSTONE, shaley | | |
| 320 | MUDSTONE, sandy | | |
| 330 | SANDSTONE, shaley | | |
| 340 | SANDSTONE | | |
| 350 | MUDSTONE, v. sandy | | |
| 355 | SANDSTONE | | |
| 360 | | | |
| 370 | MUDSTONE, v. sandy | | |
| 380 | | | |
| 390 | SANDSTONE | | |
| 400 | | | |
| 410 | | | |
| 420 | MUDSTONE | | |
| 430 | SANDSTONE | | |

BC

DE

EF

FG

LCS

HJ

Lost Creek ISR, LLC WELL COMPLETION REPORT

WELL # HJT-102 SEO # 179857 Date Drilled: 8-6-07

Location: E 742,886 / N 534,696 (NAD 27)

Ground Elev: 6937.82' Measure Point Elev: 6939.15'

TD: 430' Hole Dia.: 7-7/8"

CASED to: 390' Casing: PVC SDR17 ID: 4.5" OD: 5"

GROUT: Portland Cement – Type I/II
Pumped thru casing, displaced to surface with water

COMPLETION Aquifer: HJ Sand

Static Water Level: Depth 174' Elev: 6765' (avg.)

UNDERREAM: Blade Dia: 10.5"

Intervals: from 390 to 417 /length 27'
from _____ to _____ /length _____

SCREEN LINER ASSEMBLY

| Description | Depth | Elev. | Length |
|-------------|-----------|-------------|--------|
| | From – To | / From – To | |
| K-packer | 374' | 6565' | |
| Screen | 390' 420' | 6549' 6519' | 30' |
| | | | |
| | | | |

SCREEN SPECIFICATIONS:

Slot: 0.020" Composition 3" PVC

FILTER PACKING:

Volume: _____ (bags)(ft³) Sand Specs. _____

Method: N/A

WELL STIMULATION: Method Airlift

Yield: Good / Moderate / Poor