

GAMMA RES-SP	
HJT-104	
LOG PARAMETERS	
LOG DEPTH: 200	LOG DEPTH: 200
LOG DEPTH: 11.5	LOG DEPTH: 11.5
LOG DEPTH: 11.5	LOG DEPTH: 11.5

HJT-104

Lost Creek ISR, LLC
WELL COMPLETION REPORT

WELL # HJT0104 SEO # 179859 Date Drilled: 6-6-07

Location: E 743,653 / N 534,892 (NAD 27)

Ground Elev: 6937.48' Measure Point Elev: 6940.15'

TD: 460' Hole Dia.: 7-7/8"

CASED to: 410' Casing: PVC SDR17 ID: 4.5" OD: 5"

GROUT: Portland Cement – Type I/II
Pumped thru casing, displaced to surface with water

COMPLETION Aquifer: HJ Sand

Static Water Level: Depth 172' Elev: 6768' (avg.)

UNDERREAM: Blade Dia: 10.5"

Intervals: from 410' to 463' / length 50'
from _____ to _____ / length _____

SCREEN LINER ASSEMBLY

Description	Depth	Elev.	Length
	From – To	From – To	
K-packer	403'	6537'	
Screen	410' – 460'	6530' – 6480'	50'

SCREEN SPECIFICATIONS:

Slot: 0.020" Composition 3" PVC

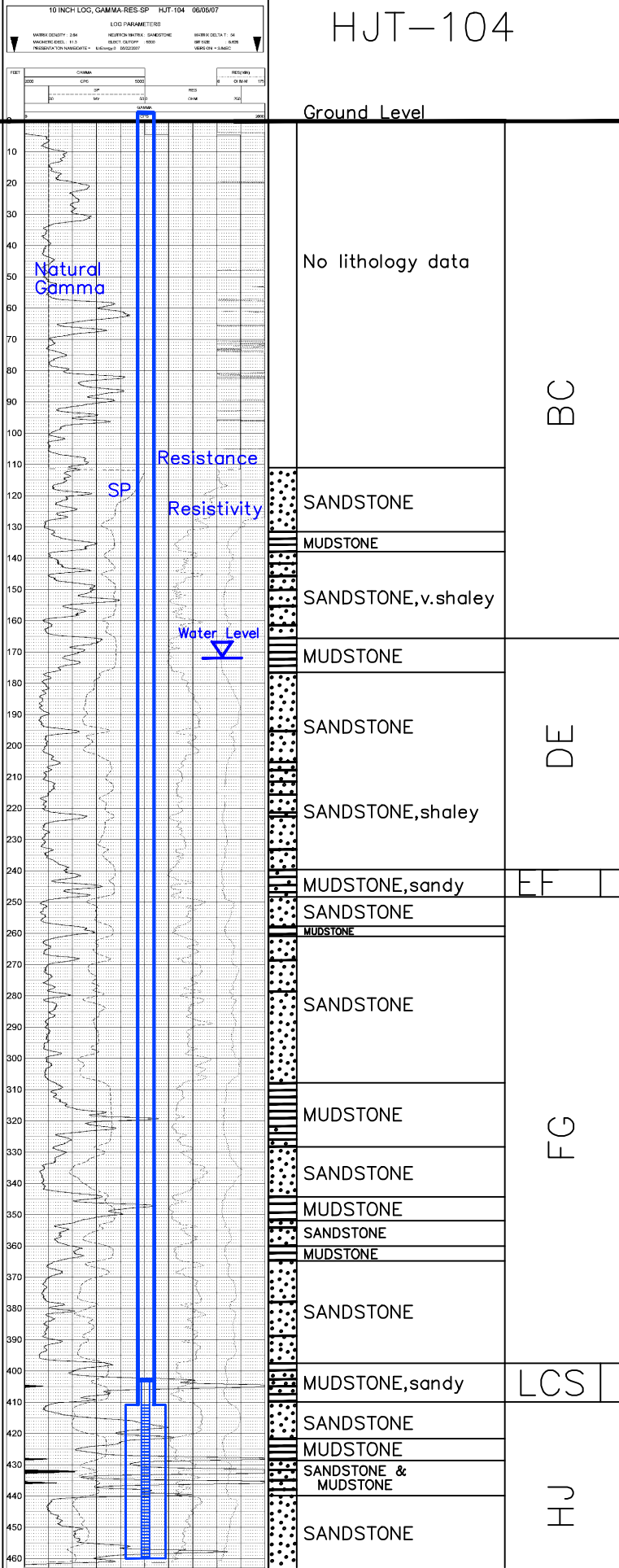
FILTER PACKING:

Volume: _____ (bags)(ft³) Sand Specs. _____

Method: N/A

WELL STIMULATION: Method Airlift

Yield: Good / Moderate / Poor



LOG PARAMETERS	
LOG DEPTH: 200	LOG DEPTH: 200
LOG DEPTH: 11.5	LOG DEPTH: 11.5
LOG DEPTH: 11.5	LOG DEPTH: 11.5

Vertical Scale: 1"=50'