

Gamma-Ray Log

LOG PARAMETERS

LOG NUMBER: HJT-105 042807

WELL: HJT-105

DATE: 04/26/07

LOG TYPE: 19 INCH LOG, GAMMA-RES-SP

HJT-105

Lost Creek ISR, LLC
WELL COMPLETION REPORT

WELL # HJT-105 SEO # 179860 Date Drilled: 4-26-07

Location: E 744,423 / N 535,024 (NAD 27)

Ground Elev: 6937.45 Measure Point Elev: 6938.87

TD: 850 ft. Hole Dia.: 7-7/8"

CASED to: 407' Casing: PVC SDR17 ID: 4.5" OD: 5"

GROUT: Portland Cement - Type I/II
 Pumped thru casing, displaced to surface with water

COMPLETION Aquifer: HJ Sand

Static Water Level: Depth 172' Elev: 6766' (avg.)

UNDERREAM: Blade Dia: 10-1/2"

Intervals: from 407' to 438' / length 31'
 from _____ to _____ / length _____

SCREEN LINER ASSEMBLY

Description	Depth		Elev.		Length
	From	To	From	To	
K-packer	403'	403'	6535'	6535'	
Screen	407'	437'	6531'	6501'	30'

SCREEN SPECIFICATIONS:

Slot: 0.020" Composition 3" PVC

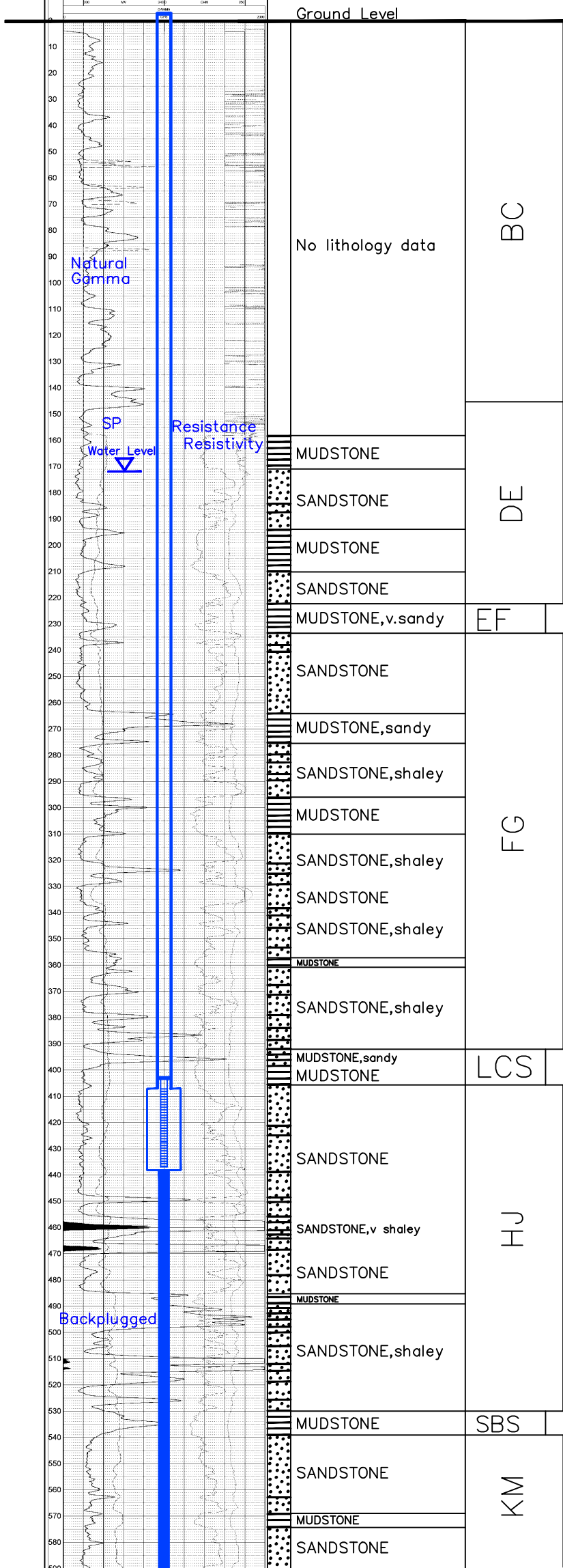
FILTER PACKING:

Volume: _____ (bags)(ft³) Sand Specs. _____
 Method: N/A

WELL STIMULATION: Method Airlift

Yield: Good / Moderate / Poor

Pilot Hole BACKPLUGGED: 438'-850'
 w/ BH Ultragrout slurry - 25% solids



Vertical Scale: 1"=50'
 TD 850