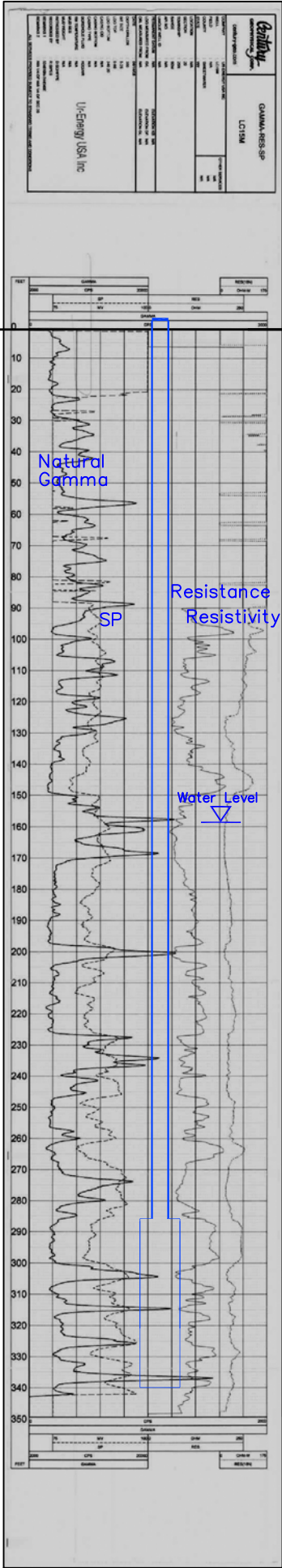


# LC15M



Vertical Scale: 1"=50'

LC15M

Ground Level

0 - 120	SANDSTONE	BC
120 - 130	MUDSTONE	DE
130 - 140	SANDSTONE, shaley	
140 - 150	SANDSTONE	
150 - 160	SANDSTONE, shaley	
160 - 170	MUDSTONE	EF
170 - 180	SANDSTONE	
180 - 190	MUDSTONE	FG
190 - 200	SANDSTONE	
200 - 210	MUDSTONE	
210 - 220	SANDSTONE	
220 - 230	MUDSTONE	
230 - 240	SANDSTONE, v. shaley	
240 - 250	MUDSTONE	LCS I
250 - 260	SANDSTONE	
260 - 270	MUDSTONE, sandy	
270 - 280	SANDSTONE	
280 - 290	MUDSTONE	
290 - 300	SANDSTONE	
300 - 310	MUDSTONE	
310 - 320	SANDSTONE	
320 - 330	MUDSTONE	
330 - 340	SANDSTONE, shaley	
340 - 350	MUDSTONE	

Lost Creek ISR, LLC

## WELL COMPLETION REPORT

WELL # LC15M SEO # 175260 Date Drilled: 8-14-06

Location: E 744,532 / N 534,820 (NAD 27)

Ground Elev: 6935.13 Measure Point Elev: 6936.55

TD: 350 ft. Hole Dia.: 7-7/8"

CASED to: 286' Casing: PVC SDR17 ID: 4.5" OD: 5"

GROUT: Portland Cement – Type I/II  
Pumped thru casing, displaced to surface with water

COMPLETION Aquifer: LFG Sand

Static Water Level: Depth 158' Elev: 6779' (avg.)

UNDERREAM: Blade Dia: 10-1/2"

Intervals: from 286' to 340' / length 54'

from \_\_\_\_\_ to \_\_\_\_\_ / length \_\_\_\_\_

### OPEN-HOLE COMPLETION

Description	Depth		Elev.		Length
	From	To	From	To	
K-packer	N/A				
Open-hole	286'	340'	6650'	6596'	54'

### SCREEN SPECIFICATIONS:

Slot: \_\_\_\_\_ Composition N/A

### FILTER PACKING:

Volume: \_\_\_\_\_ (bags)(ft<sup>3</sup>) Sand Specs. \_\_\_\_\_

Method: N/A

WELL STIMULATION: Method Airlift

Yield: Good / Moderate / Poor

LC15M