

# LC16M

LC16M

## Lost Creek ISR, LLC WELL COMPLETION REPORT

WELL # LC16M SEO # 175260 Date Drilled: 8-14-07

Location: E 744,549 / N 534,818 (NAD 27)

Ground Elev: 6934.73' Measure Point Elev: 6936.15'

TD: 472' Hole Dia.: 7-7/8"

CASED to: 410' Casing: PVC SDR17 ID: 4.5" OD: 5"

GROUT: Portland Cement – Type I/II  
Pumped thru casing, displaced to surface with water

COMPLETION Aquifer: HJ Sand

Static Water Level: Depth 179' Elev: 6757' (avg.)

UNDERREAM: Blade Dia: 10.5"

Intervals: from 410' to 467' / length 57'  
from \_\_\_\_\_ to \_\_\_\_\_ / length \_\_\_\_\_

### OPEN-HOLE COMPLETION

Description	Depth		Elev.		Length
	From	To	From	To	
K-packer		N/A			
Open-Hole	410'	467'	6526'	6469'	57'

### SCREEN SPECIFICATIONS:

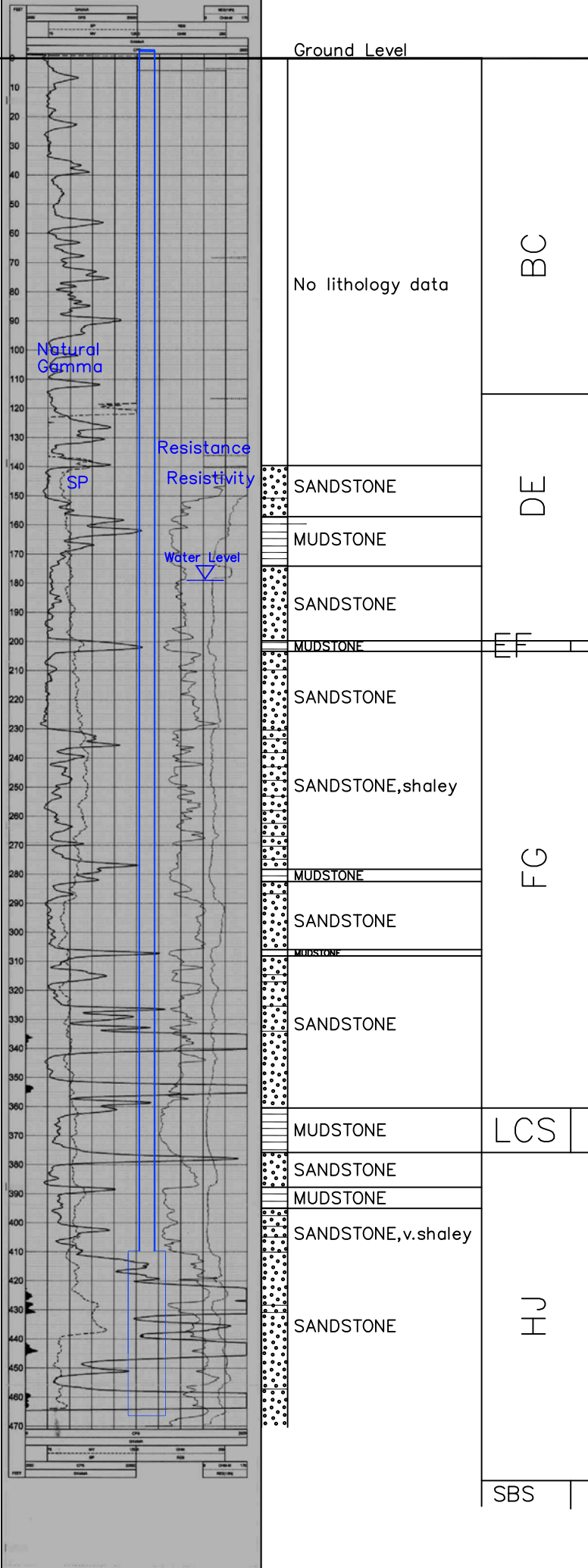
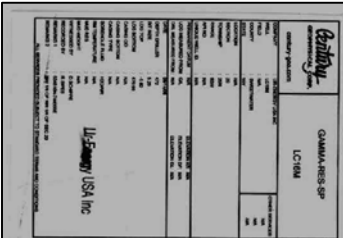
Slot: \_\_\_\_\_ Composition N/A

### FILTER PACKING:

Volume: \_\_\_\_\_ (bags)(ft<sup>3</sup>) Sand Specs. \_\_\_\_\_  
Method: N/A

WELL STIMULATION: Method Airlift

Yield: Good / Moderate / Poor



Vertical Scale: 1"=50'

LC16M