

LC17M

LC17M

Lost Creek ISR, LLC WELL COMPLETION REPORT

WELL # LC17M SEO # 175260 Date Drilled: 8-14-06

Location: E 744,548 / N 534,838 (NAD 27)

Ground Elev: 6935.32 Measure Point Elev: 6936.90

TD: 575 ft. Hole Dia.: 7-7/8"

CASED to: 529' Casing: PVC SDR17 ID: 4.5" OD: 5"

GROUT: Portland Cement – Type I/II
Pumped thru casing, displaced to surface with water

COMPLETION Aquifer: UKM Sand
Static Water Level: Depth 187' Elev: 6750' (avg.)

UNDERREAM: Blade Dia: 10-1/2"
Intervals: from 529' to 565' / length 36'
from _____ to _____ / length _____

OPEN-HOLE COMPLETION

Description	Depth		Elev.		Length
	From	To	From	To	
K-packer	N/A				
Open-hole	529'	565'	6408'	6372'	36'

SCREEN SPECIFICATIONS:

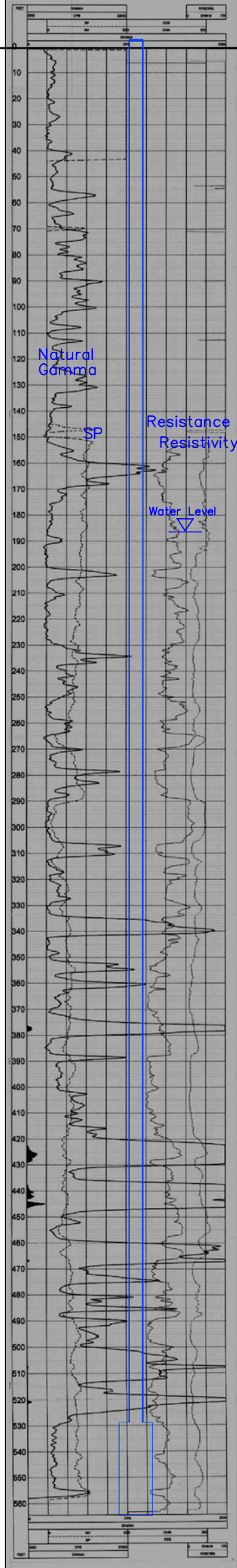
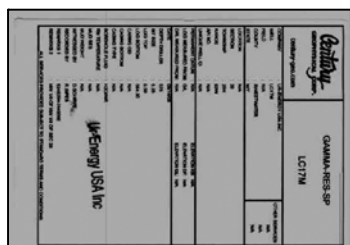
Slot: _____ Composition N/A

FILTER PACKING:

Volume: _____ (bags)(ft³) Sand Specs. _____
Method: N/A

WELL STIMULATION: Method Airlift

Yield: Good / Moderate / Poor



Depth (ft)	Lithology	Interval
0 - 110	No lithology data	BC
110 - 155	SANDSTONE	DE
155 - 165	MUDSTONE	
165 - 175	SANDSTONE	EF
175 - 185	MUDSTONE	
185 - 275	SANDSTONE	FG
275 - 285	SANDSTONE, shaley	
285 - 295	SANDSTONE	
295 - 305	MUDSTONE	
305 - 315	SANDSTONE	
315 - 325	MUDSTONE	
325 - 365	SANDSTONE	LCS
365 - 375	MUDSTONE	
375 - 425	SANDSTONE	HJ
425 - 435	MUDSTONE	
435 - 445	MUDSTONE, sandy	
445 - 455	MUDSTONE	
455 - 475	SANDSTONE	SBS
475 - 485	MUDSTONE	
485 - 495	SANDSTONE	
495 - 505	MUDSTONE	KM
505 - 515	SANDSTONE	
515 - 525	SANDSTONE, shaley	
525 - 565	SANDSTONE	

Vertical Scale: 1"=50'