

COMPANY: LC19M PROJECT: LC19M CLIENT: U-Energy/ISA Inc	DATE: 8-14-06 TIME: 10:00 AM LOCATION:

LC19M

Lost Creek ISR, LLC
WELL COMPLETION REPORT

WELL # LC19M SEO # 175261 Date Drilled: 8-14-06

Location: E 743,383 / N 535,317 (NAD 27)

Ground Elev: 6949.32 Measure Point Elev: 6950.52

TD: 463 ft. Hole Dia.: 7-7/8"

CASED to: 412' Casing: PVC SDR17 ID: 4.5" OD: 5"

GROUT: Portland Cement - Type I/II
 Pumped thru casing, displaced to surface with water

COMPLETION Aquifer: HJ Sand

Static Water Level: Depth 181' Elev: 6769' (avg.)

UNDERREAM: Blade Dia: 10-1/2"

Intervals: from 412' to 463' / length 51'
 from _____ to _____ / length _____

OPEN-HOLE COMPLETION

Description	Depth		Elev.		Length
	From	To	From	To	
K-packer	N/A				
Open-hole	412'	463'	6538'	6487'	51'

SCREEN SPECIFICATIONS:

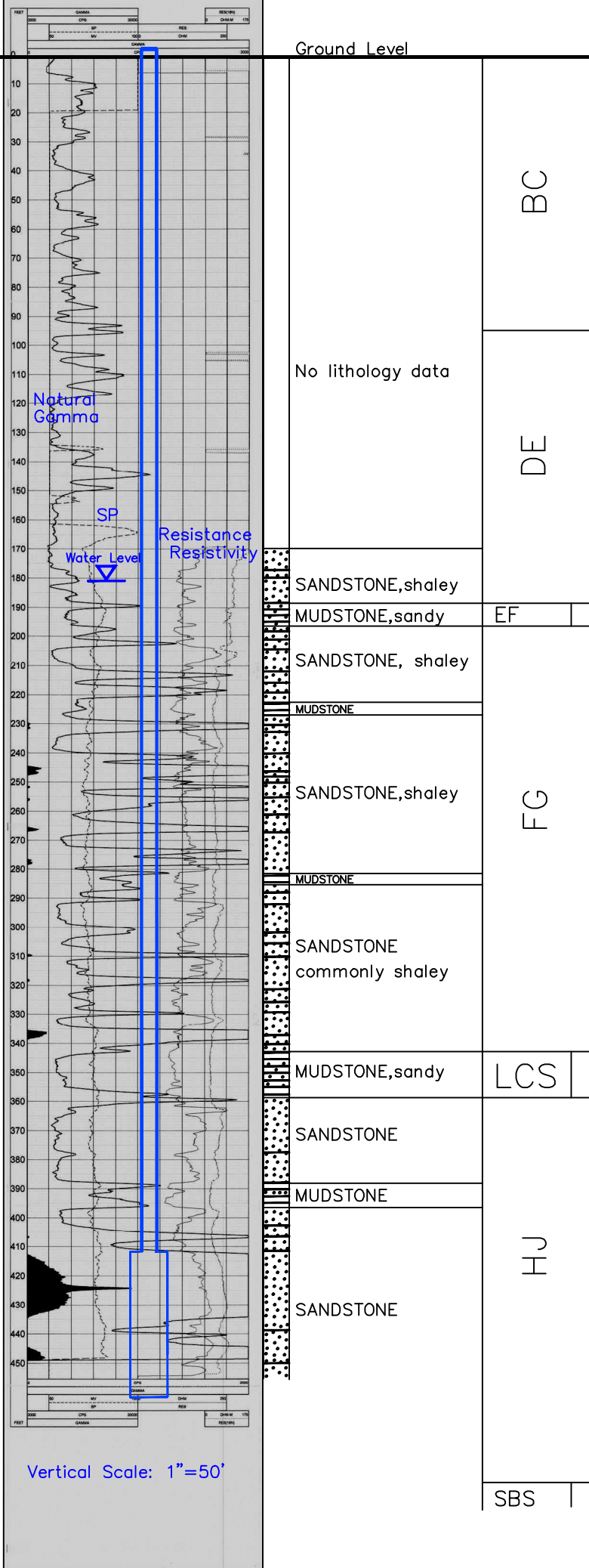
Slot: _____ Composition N/A

FILTER PACKING:

Volume: _____ (bags)(ft³) Sand Specs. _____
 Method: N/A

WELL STIMULATION: Method Airlift

Yield: Good / Moderate / Poor



Ground Level		
No lithology data	BC	
	DE	
SANDSTONE, shaley		
MUDSTONE, sandy	EF	
SANDSTONE, shaley		
MUDSTONE		
SANDSTONE, shaley	FG	
MUDSTONE		
SANDSTONE commonly shaley		
MUDSTONE, sandy	LCS	
SANDSTONE		
MUDSTONE		
SANDSTONE	HJ	
	SBS	