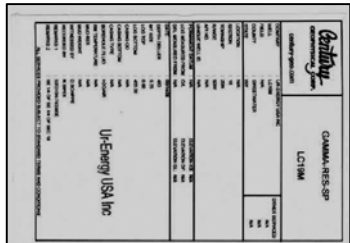


# LC19M



LC19M

## Lost Creek ISR, LLC WELL COMPLETION REPORT

WELL # LC19M SEO # 175261 Date Drilled: 8-14-06

Location: E 743,383 / N 535,317 (NAD 27)

Ground Elev: 6949.32 Measure Point Elev: 6950.52

TD: 463 ft. Hole Dia.: 7-7/8"

CASED to: 412' Casing: PVC SDR17 ID: 4.5" OD: 5"

GROUT: Portland Cement – Type I/II  
Pumped thru casing, displaced to surface with water

COMPLETION Aquifer: HJ Sand

Static Water Level: Depth 181' Elev: 6769' (avg.)

UNDERREAM: Blade Dia: 10-1/2"

Intervals: from 412' to 463' / length 51'  
from \_\_\_\_\_ to \_\_\_\_\_ / length \_\_\_\_\_

### OPEN-HOLE COMPLETION

| Description | Depth |      | Elev. |       | Length |
|-------------|-------|------|-------|-------|--------|
|             | From  | To   | From  | To    |        |
| K-packer    | N/A   |      |       |       |        |
| Open-hole   | 412'  | 463' | 6538' | 6487' | 51'    |
|             |       |      |       |       |        |
|             |       |      |       |       |        |

### SCREEN SPECIFICATIONS:

Slot: \_\_\_\_\_ Composition N/A

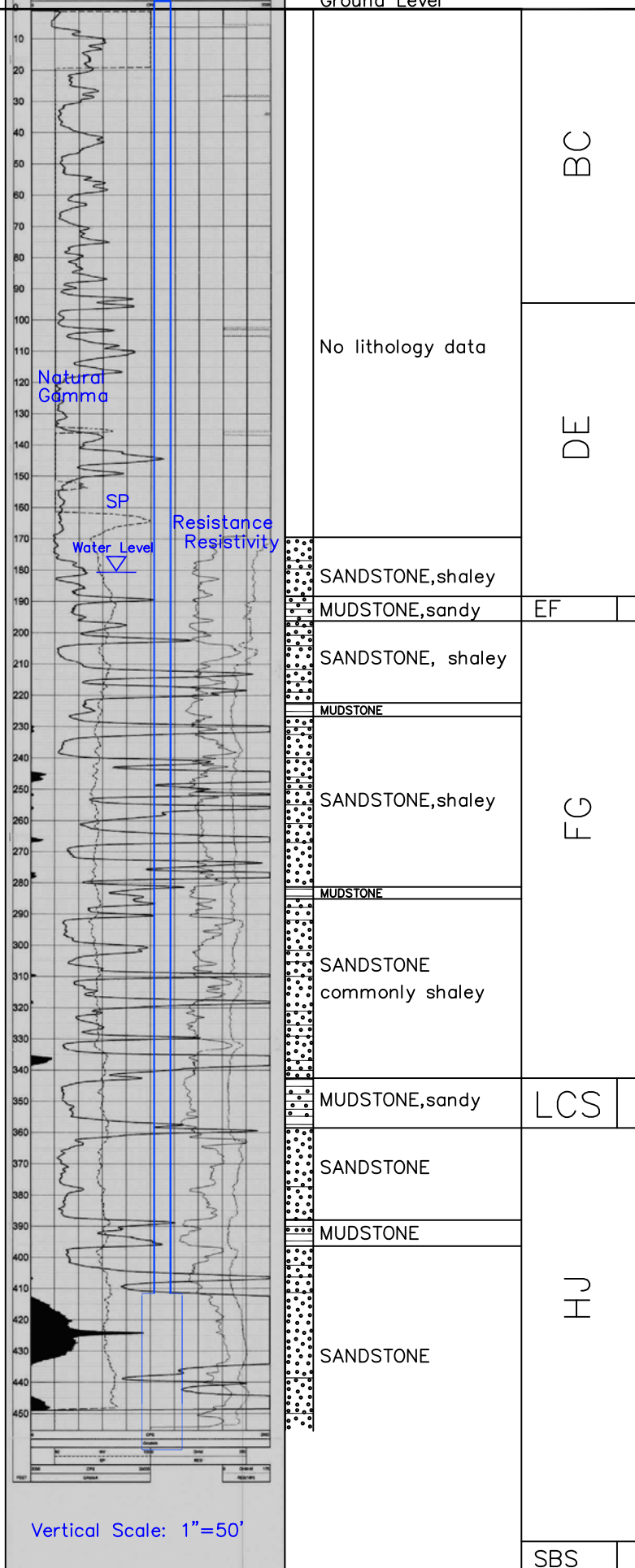
### FILTER PACKING:

Volume: \_\_\_\_\_ (bags)(ft<sup>3</sup>) Sand Specs. \_\_\_\_\_  
Method: N/A

WELL STIMULATION: Method Airlift

Yield: Good / Moderate / Poor

Ground Level



LC19M