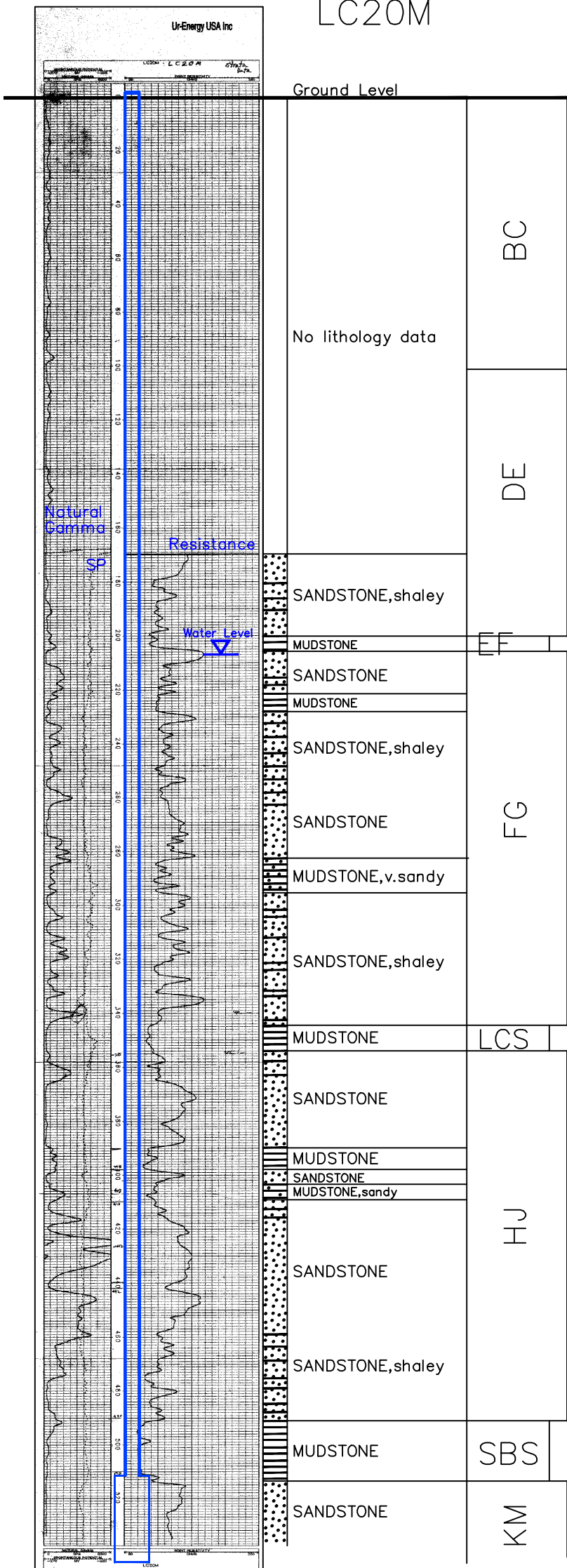


Lost Creek ISR, LLC

WELL COMPLETION REPORT

LC20M

Ur-Energy USA Inc



Vertical Scale: 1"=50'

WELL # LC20M SEO # 175261 Date Drilled: 8-30-06

Location: E 743,383 / N 535,331 (NAD 27)

Ground Elev: 6949.27' Measure Point Elev: 6950.64'

TD: 543' Hole Dia.: 7-7/8"

CASED to: 511' Casing: PVC SDR17 ID: 4.5" OD: 5"

GROUT: Portland Cement - Type I/II  
Pumped thru casing, displaced to surface with water

COMPLETION Aquifer: UKM Sand

Static Water Level: Depth 209' Elev: 6742' (avg.)

UNDERREAM: Blade Dia: 10.5"

Intervals: from 511' to 543' / length 32'  
from \_\_\_\_\_ to \_\_\_\_\_ / length \_\_\_\_\_

OPEN-HOLE COMPLETION

Description	Depth		Elev.		Length
	From	To	From	To	
<u>K-packer</u>				<u>N/A</u>	
<u>Open-hole</u>	<u>511'</u>	<u>543'</u>	<u>6440'</u>	<u>6408'</u>	<u>32'</u>

SCREEN SPECIFICATIONS:

Slot: \_\_\_\_\_ Composition N/A

FILTER PACKING:

Volume: \_\_\_\_\_ (bags)(ft<sup>3</sup>) Sand Specs. \_\_\_\_\_  
Method: N/A

WELL STIMULATION: Method Airlift

Yield: Good / Moderate / Poor