

LC20M

Lost Creek ISR, LLC

WELL COMPLETION REPORT

LC20M

WELL # LC20M SEO # 175261 Date Drilled: 8-30-06

Location: E 743,383 / N 535,331 (NAD 27)

Ground Elev: 6949.27' Measure Point Elev: 6950.64'

TD: 543' Hole Dia.: 7-7/8"

CASED to: 511' Casing: PVC SDR17 ID: 4.5" OD: 5"

GROUT: Portland Cement – Type I/II
Pumped thru casing, displaced to surface with water

COMPLETION Aquifer: UKM Sand

Static Water Level: Depth 209' Elev: 6742' (avg.)

UNDERREAM: Blade Dia: 10.5"

Intervals: from 511' to 543' /length 32'
from _____ to _____ /length _____

OPEN-HOLE COMPLETION

Description	Depth		Elev.		Length
	From	To	From	To	
K-packer				N/A	
Open-hole	511'	543'	6440'	6408'	32'

SCREEN SPECIFICATIONS:

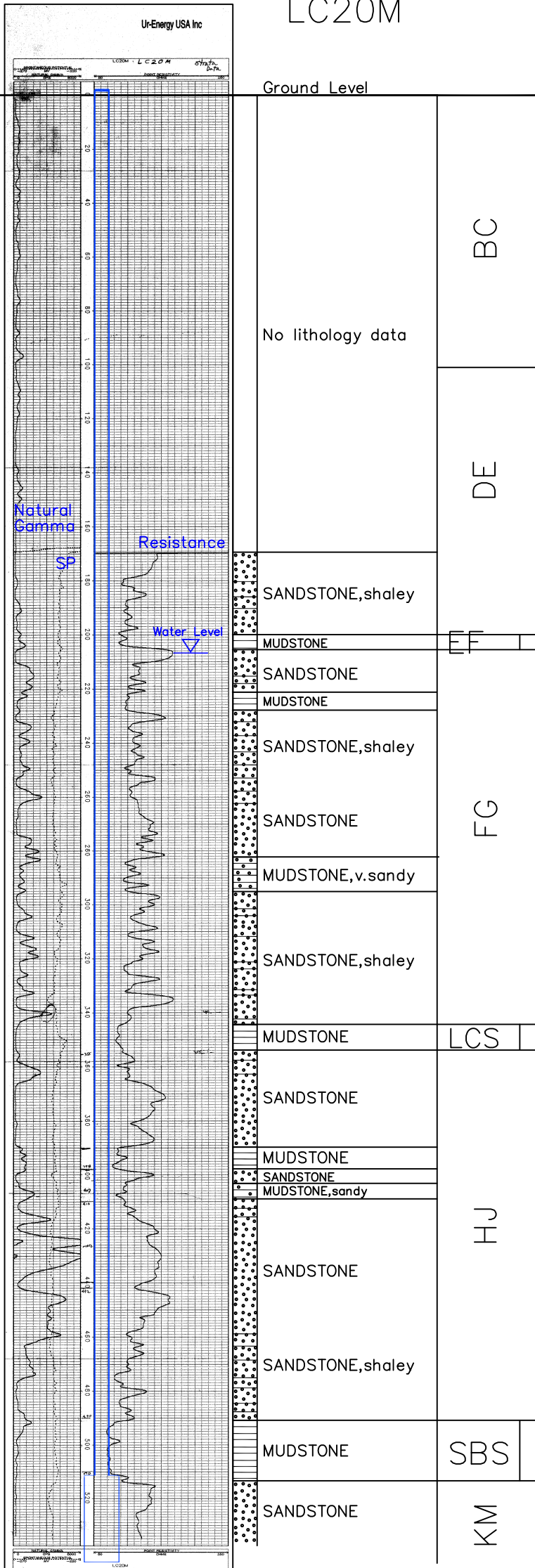
Slot: _____ Composition N/A

FILTER PACKING:

Volume: _____ (bags)(ft³) Sand Specs. _____
Method: N/A

WELL STIMULATION: Method Airlift

Yield: Good / Moderate / Poor



Vertical Scale: 1"=50'