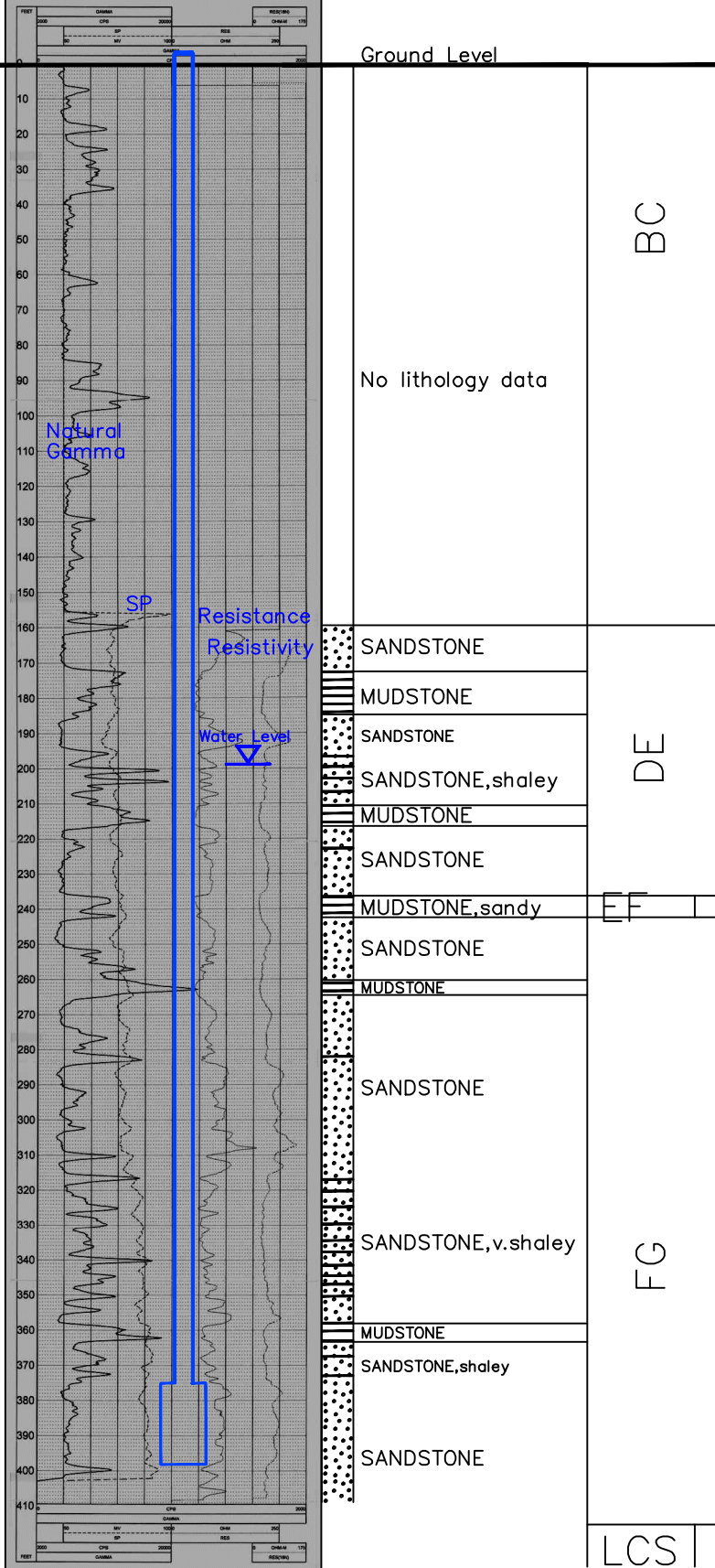


LC21M

Lost Creek ISR, LLC  
WELL COMPLETION REPORT



WELL # LC21M    SEO # 175262    Date Drilled: 8-30-06  
 Location: E 736,277 / N 532,850 (NAD 27)  
 Ground Elev: 6925.00'    Measure Point Elev: 6927.13  
 TD: 410 ft.    Hole Dia.: 7-7/8"  
 CASED to: 375'    Casing: PVC SDR17 ID: 4.5" OD: 5"  
 GROUT: Portland Cement – Type I/II  
 Pumped thru casing, displaced to surface with water  
 COMPLETION Aquifer:    LFG Sand  
 Static Water Level: Depth 199'    Elev: 6728' (avg.)

UNDERREAM:    Blade Dia: 10-1/2"  
 Intervals: from 375' to 398' / length 23'  
                   from \_\_\_\_\_ to \_\_\_\_\_ / length \_\_\_\_\_

OPEN-HOLE COMPLETION

Description	Depth		Elev.		Length
	From	To	From	To	
K-packer	N/A				
Open-hole	375'	398'	6353'	6330'	23'

SCREEN SPECIFICATIONS:  
 Slot: \_\_\_\_\_    Composition N/A

FILTER PACKING:  
 Volume: \_\_\_\_\_ (bags)(ft<sup>3</sup>)    Sand Specs. \_\_\_\_\_  
 Method: N/A

WELL STIMULATION: Method N/A  
 Yield: Good / Moderate / Poor