

Gamma-Ray Log
 GAMMA-RAY LOG
 LC23M
 U-ENERGY USA, INC.

LC23M

Lost Creek ISR, LLC
WELL COMPLETION REPORT

WELL # LC23M SEO # 175262 Date Drilled: 8-23-06

Location: E 736,262 / N 532,835 (NAD 27)

Ground Elev: 6924.41 Measure Point Elev: 6926.80

TD: 634 ft. Hole Dia.: 7-7/8"

CASED to: 595' Casing: PVC SDR17 ID: 4.5" OD: 5"

GROUT: Portland Cement – Type I/II
 Pumped thru casing, displaced to surface with water

COMPLETION Aquifer: UKM Sand

Static Water Level: Depth 220' Elev: 6706' (avg.)

UNDERREAM: Blade Dia: 10-1/2"

Intervals: from 595' to 630' / length 35'
 from _____ to _____ / length _____

OPEN-HOLE COMPLETION

Description	Depth		Elev.		Length
	From	To	From	To	
K-packer	N/A				
Open-hole	595'	630'	6331'	6296'	35'

SCREEN SPECIFICATIONS:

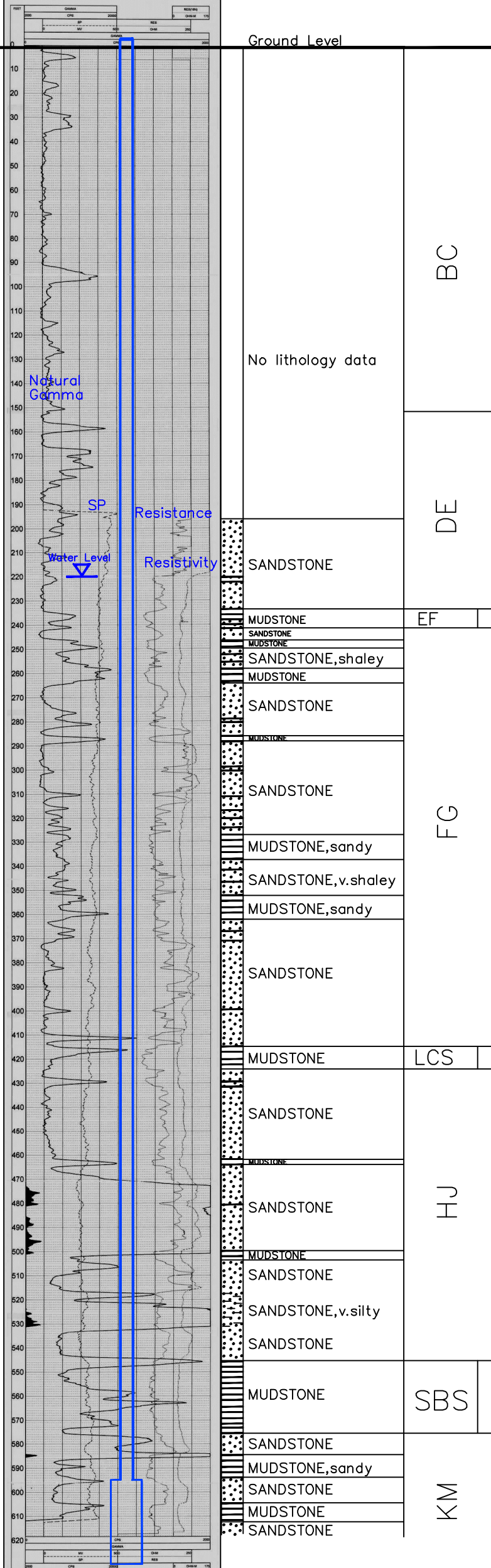
Slot: _____ Composition N/A

FILTER PACKING:

Volume: _____ (bags)(ft³) Sand Specs. _____
 Method: N/A

WELL STIMULATION: Method Airfit

Yield: Good / Moderate / Poor



Vertical Scale: 1"=50'