

Lost Creek ISR, LLC  
WELL COMPLETION REPORT

LC24M

WELL # LC24M    SEO # 175263    Date Drilled: 8-30-06

Location: E 744,566 / N 535,200 (NAD 27)

Ground Elev: 6942.33'    Measure Point Elev: 6944.33'

TD: 542'    Hole Dia.: 7-7/8"

CASED to: 478'    Casing: PVC SDR17 ID: 4.5" OD: 5"

GROUT: Portland Cement – Type I/II  
 Pumped thru casing, displaced to surface with water

COMPLETION Aquifer:    UKM Sand

Static Water Level: Depth 204'    Elev: 6740' (avg.)

UNDERREAM:    Blade Dia: 10.5"

Intervals: from 478' to 531' / length 53'  
 from \_\_\_\_\_ to \_\_\_\_\_ / length \_\_\_\_\_

OPEN-HOLE COMPLETION

Description	Depth		Elev.		Length
	From	To	From	To	
K-packer	N/A				
Open-hole	478'	531'	6466'	6413'	53'

SCREEN SPECIFICATIONS:

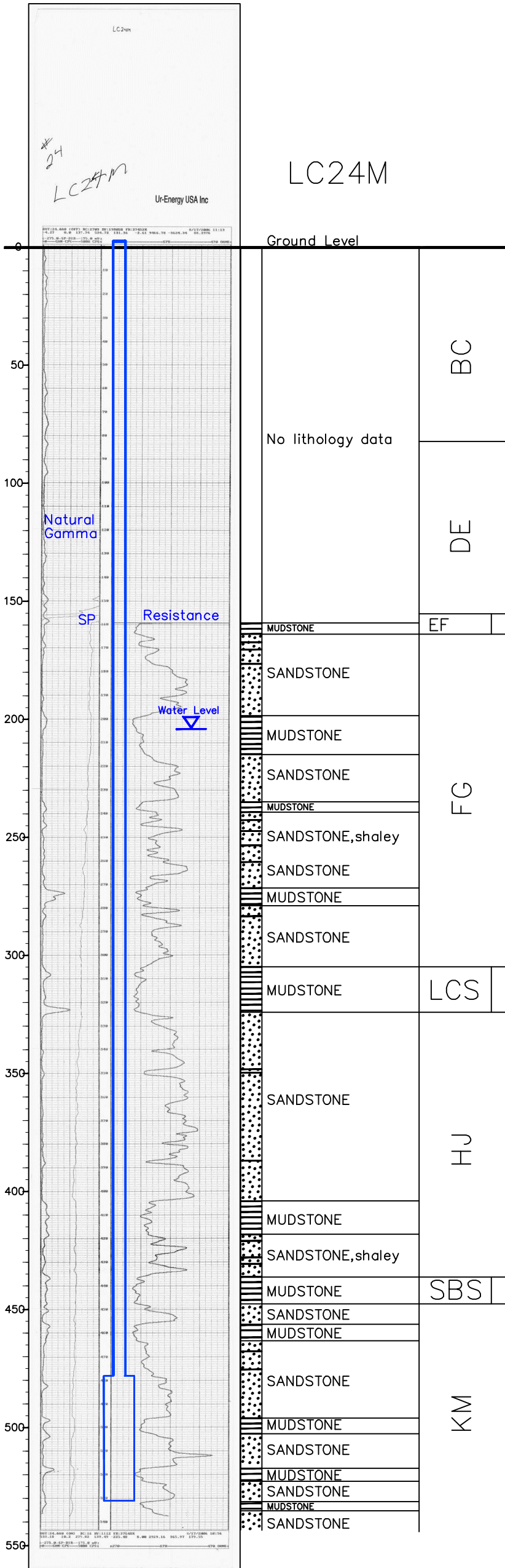
Slot: \_\_\_\_\_    Composition N/A

FILTER PACKING:

Volume: \_\_\_\_\_ (bags)(ft<sup>3</sup>)    Sand Specs. \_\_\_\_\_  
 Method: N/A

WELL STIMULATION: Method Airlift

Yield: Good / Moderate / Poor



Vertical Scale: 1"=50'