

LC25M

Lost Creek ISR, LLC

WELL COMPLETION REPORT

LC25M

WELL # LC25M SEO # 175264 Date Drilled: 9-19-06

Location: E 743,397 / N 534,601 (NAD 27)

Ground Elev: 6935.00 Measure Point Elev: 6936.52

TD: 380 ft. Hole Dia.: 7-7/8"

CASED to: 316' Casing: PVC SDR17 ID: 4.5" OD: 5"

GROUT: Portland Cement - Type I/II
Pumped thru casing, displaced to surface with water

COMPLETION Aquifer: LFG Sand

Static Water Level: Depth 161' Elev: 6775' (avg.)

UNDERREAM: Blade Dia: 10-1/2"

Intervals: from 316' to 349' /length 33'
from _____ to _____ /length _____

OPEN-HOLE COMPLETION

Description	Depth		Elev.		Length
	From - To	/	From - To		
K-packer	N/A				
Open-hole	316'	349'	6620'	6587'	33'

SCREEN SPECIFICATIONS:

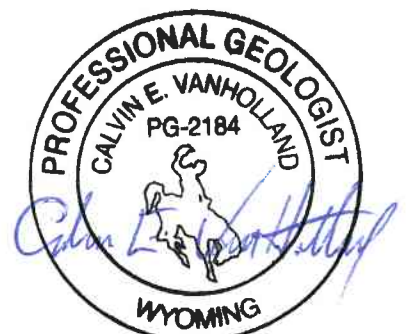
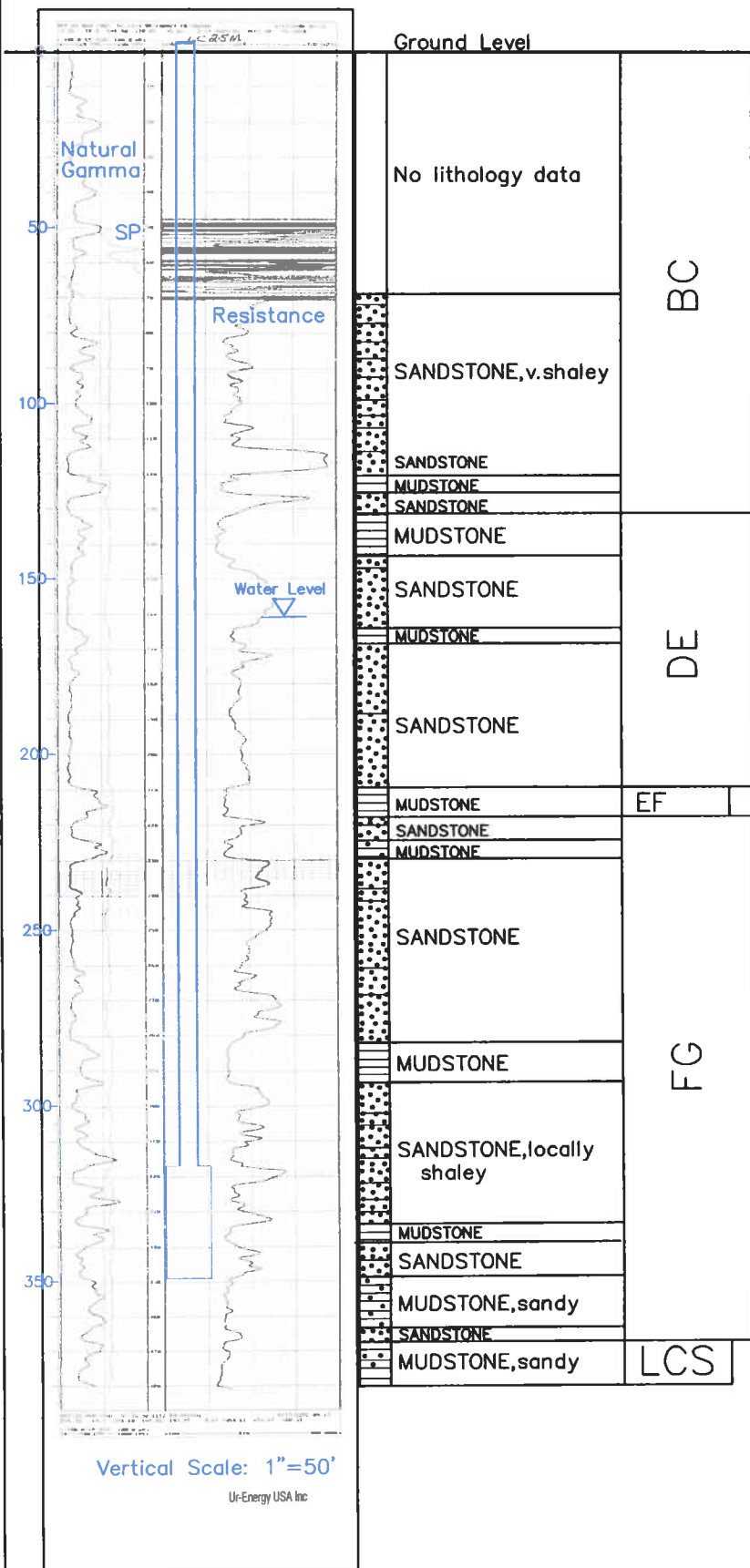
Slot: _____ Composition N/A

FILTER PACKING:

Volume: _____ (bags)(ft³) Sand Specs. _____
Method: N/A

WELL STIMULATION: Method Airlift

Yield: Good / Moderate / Poor



LC25M