

Geology
 COMPANY: GAMMA-RES-SP
 WELL: LC28M
 U-ENERGY USA INC

LC28M

Lost Creek ISR, LLC
WELL COMPLETION REPORT

WELL # LC28M SEO # 175267 Date Drilled: 8-30-06

Location: E 733,364 / N 524,437 (NAD 27)

Ground Elev: 6804' Measure Point Elev: 6805.19'

TD: 563' Hole Dia.: 7-7/8"

CASED to: 502' Casing: PVC SDR17 ID: 4.5" OD: 5"

GROUT: Portland Cement – Type I/II
 Pumped thru casing, displaced to surface with water

COMPLETION Aquifer: UKM Sand
 Static Water Level: Depth 154' Elev: 6651' (avg.)

UNDERREAM: Blade Dia: 10.5"
 Intervals: from 502' to 557' / length 55'
 from _____ to _____ / length _____

OPEN-HOLE COMPLETION

Description	Depth		Elev.		Length
	From	To	From	To	
K-packer	N/A				
Open-hole	502'	557'	6303'	6248'	55'

SCREEN SPECIFICATIONS:

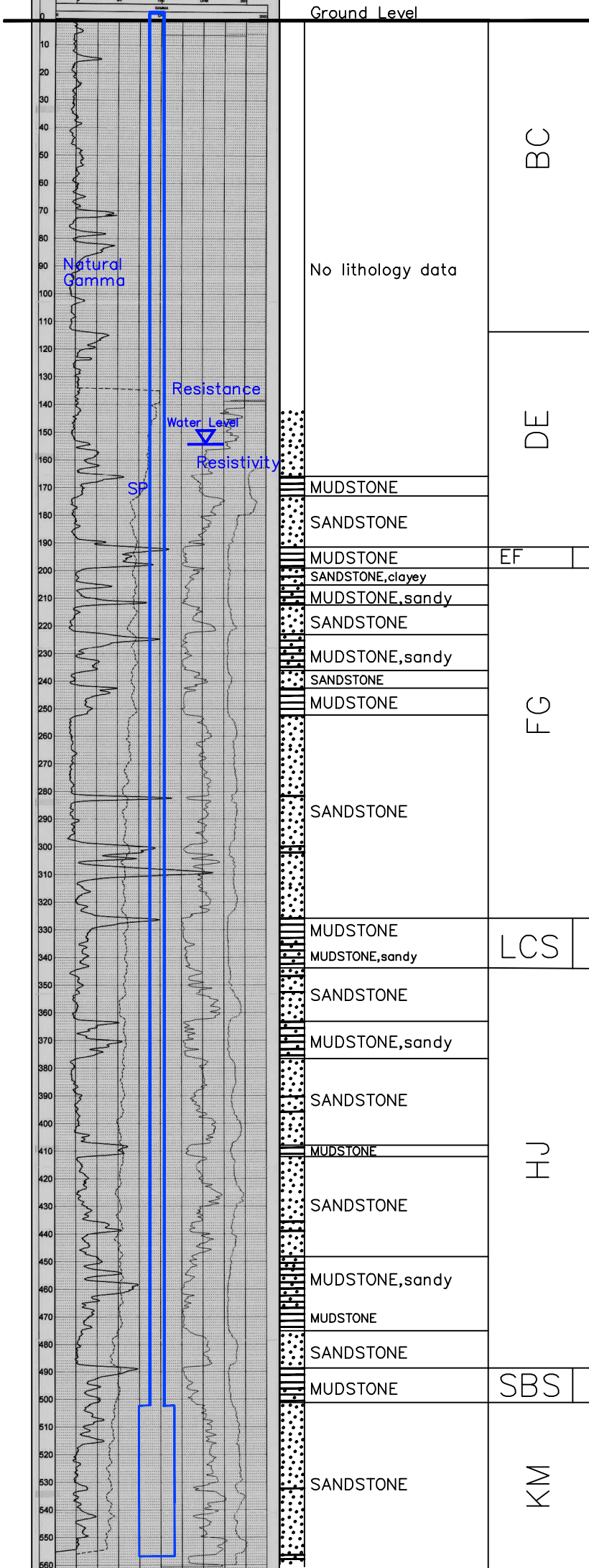
Slot: _____ Composition N/A

FILTER PACKING:

Volume: _____ (bags)(ft³) Sand Specs. _____
 Method: N/A

WELL STIMULATION: Method Airlift

Yield: Good / Moderate / Poor



Vertical Scale: 1"=50'