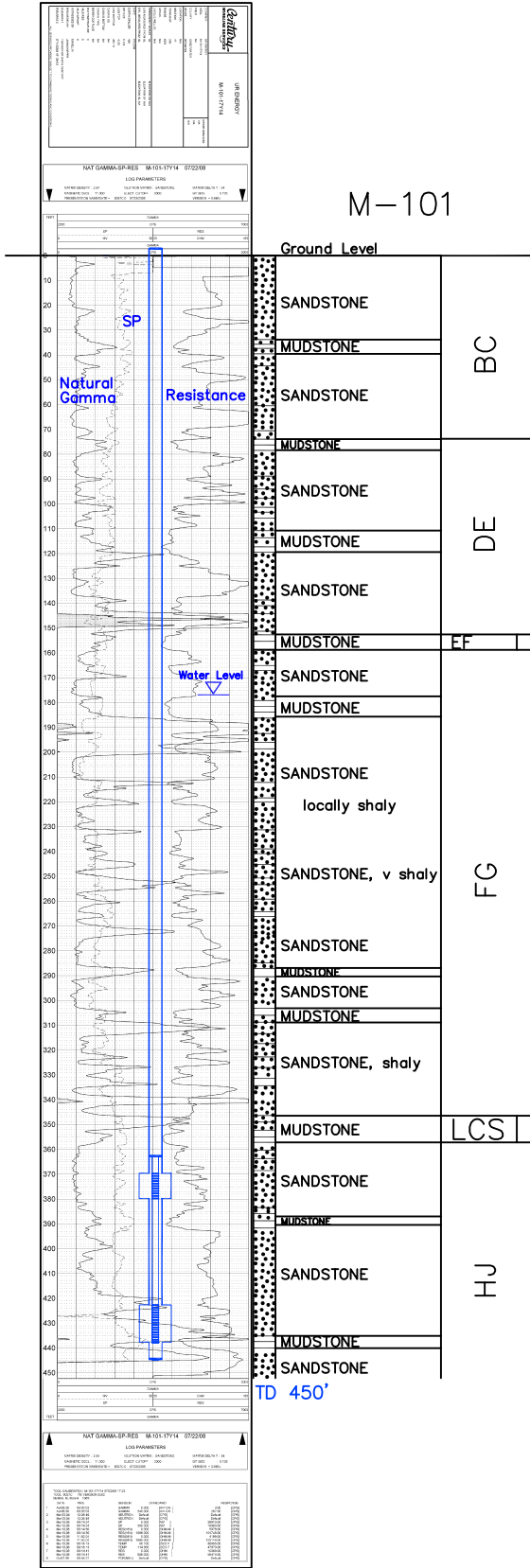


M-101

Lost Creek ISR, LLC  
WELL COMPLETION REPORT

M-101



WELL # M-101 SEO # 187651 Date Drilled: 7/22/08

Location: E 2,214,619 / N 595,288' (NAD 83)

Ground Elev: 6948.8' Measure Point Elev: 6949.24

TD: 450' Hole Dia.: 7-7/8"

CASED to: 445' Casing: PVC SDR17 ID: 4.5" OD: 5"

GROUT: Portland Cement - Type I/II  
 Pumped thru casing, displaced to surface with water

COMPLETION Aquifer: UHJ\*, MHJ Sands

Static Water Level: Depth 177' Elev: 6772' (avg.)

UNDERREAM: Blade Dia: 10.5"

Intervals: from 370' to 380' / length 10'\*  
 from 423' to 438' / length 15'

SCREEN LINER ASSEMBLY

Description	Depth		Elev.		Length
	From - To	/	From - To		
K-packer	363'		6586'		
Screen	370'	380'	6579'	6569'	10'*
Screen	423'	438'	6526'	6511'	15'

SCREEN SPECIFICATIONS:

Slot: 0.020" Composition 3" PVC

FILTER PACKING:

Volume: \_\_\_\_\_ (bags)(ft<sup>3</sup>) Sand Specs. \_\_\_\_\_  
 Method: N/A

WELL STIMULATION: Method Airlift

Yield: Good / Moderate / Poor

\* Worked-over 9/15/10:

New Completion Interval: 370'-380'

M-101