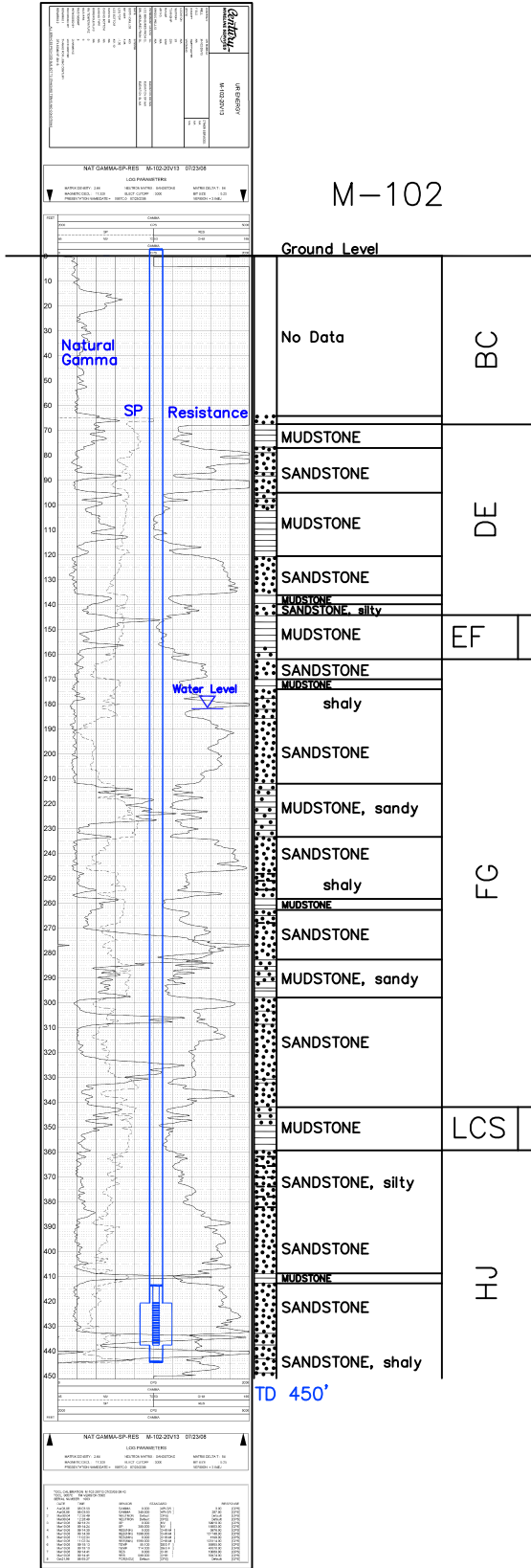


M-102

Lost Creek ISR, LLC
WELL COMPLETION REPORT

M-102



WELL # M-102 SEO # 187651 Date Drilled: 7/23/08

Location: E 2,214,476 / N 594,822 (NAD 83)

Ground Elev: 6951.4' Measure Point Elev: 6952.73'

TD: 450 Hole Dia.: 7-7/8"

CASED to: 445 Casing: PVC SDR17 ID: 4.5" OD: 5"

GROUT: Portland Cement – Type I/II
 Pumped thru casing, displaced to surface with water

COMPLETION Aquifer: MHJ Sand

Static Water Level: Depth 182' Elev: 6769' (avg.)

UNDERREAM: Blade Dia: 10"

Intervals: from 421' to 438' / length 17'
 from _____ to _____ / length _____

SCREEN LINER ASSEMBLY

Description	Depth		Elev.	Length
	From – To	/ From – To		
K-packer	414'		6537'	
Screen	421'	438'	6530' 6513'	17'

SCREEN SPECIFICATIONS:

Slot: 0.020" Composition 3" PVC

FILTER PACKING:

Volume: _____ (bags)(ft³) Sand Specs. _____
 Method: N/A

WELL STIMULATION: Method Airlift

Yield: Good / Moderate / Poor

M-102