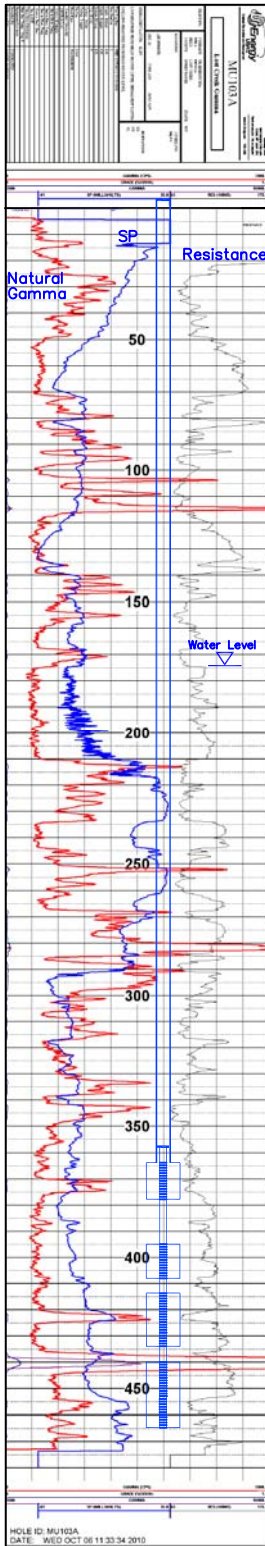


M-103A

Lost Creek ISR, LLC

WELL COMPLETION REPORT

M-103A



WELL # M-103A SEO # 187651 Date Drilled: 10/14/10

Location: E 2,214,025 / N 594,644 (NAD 83)

Ground Elev: 6945.0' Measure Point Elev: 6946.0'

TD: 475' Hole Dia.: 7-7/8"

CASED to: 364' Casing: PVC SDR17 ID: 4.5" OD: 5"

GROUT: Portland Cement - Type I/II  
Pumped thru casing, displaced to surface with water

COMPLETION Aquifer: UHJ, MHJ, LHJ Sands

Static Water Level: Depth 174' Elev: 6771' (avg.)

UNDERREAM: Blade Dia: 10"  
Intervals: from 364' to 378' / length 14'  
from 395' to 408' / length 13'  
from 414' to 434' / length 20'  
from 440' to 465' / length 25'

SCREEN LINER ASSEMBLY

Description	Depth		Elev.		Length
	From - To	/ From - To	From - To		
K-packer	358'		6587'		
Screen	364'	378'	6581'	6567'	14'
Screen	395'	408'	6550'	6537'	13'
Screen	414'	434'	6531'	6511'	20'
Screen	440'	465'	6505'	6480'	25'

SCREEN SPECIFICATIONS:

Slot: 0.020" Composition 3" PVC

FILTER PACKING:

Volume: \_\_\_\_\_ (bags)(ft<sup>3</sup>) Sand Specs. \_\_\_\_\_

Method: N/A

WELL STIMULATION: Method Airlift

Yield: Good / Moderate / Poor

M-103A

M-103A Replaces M-103.