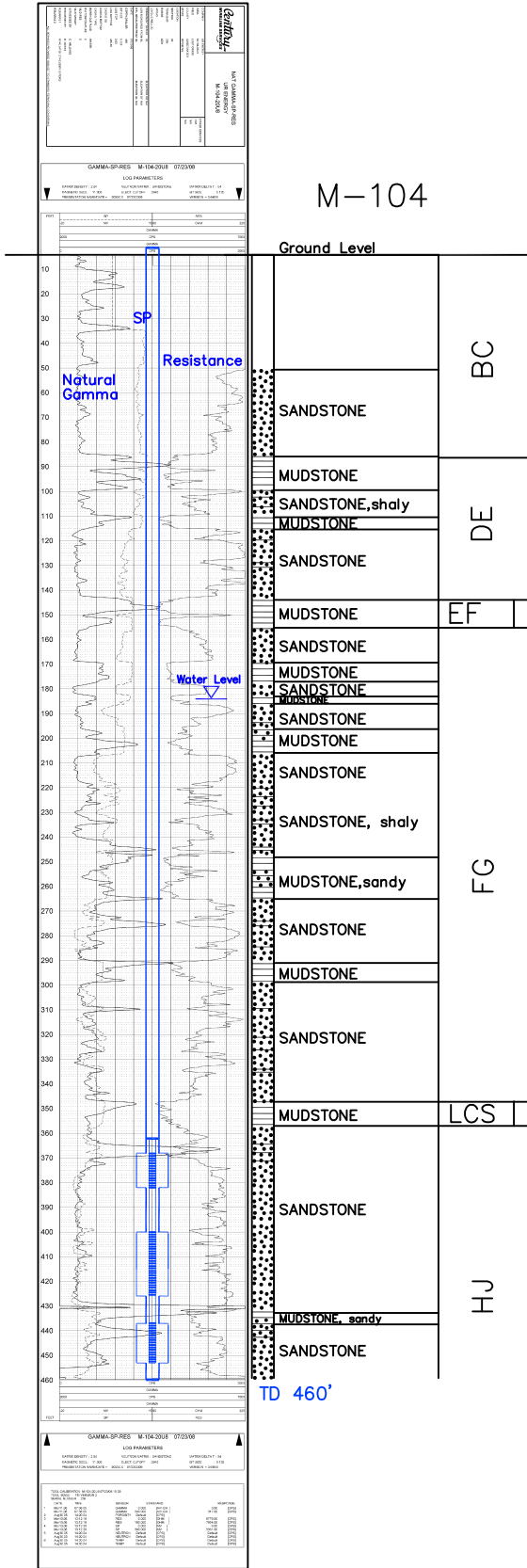


Lost Creek ISR, LLC
WELL COMPLETION REPORT

M-104



WELL # M-104 SEO # 187651 Date Drilled: 7/23/08

Location: E 2,213,543 / N 594,565 (NAD 83)

Ground Elev: 6941.7' Measure Point Elev: 6942.11'

TD: 460' Hole Dia.: 7-7/8"

CASED to: 460' Casing: PVC SDR17 ID: 4.5" OD: 5"

GROUT: Portland Cement - Type I/II
 Pumped thru casing, displaced to surface with water

COMPLETION Aquifer: UHJ, MHJ, LHJ Sands

Static Water Level: Depth 184' Elev: 6758' (avg.)

UNDERREAM: Blade Dia: 10.5"

Intervals: from 368' to 382' / length 14'

from 400' to 415' / length 15'

from 415' to 426' / length 11'*

from 437' to 453' / length 16'

SCREEN LINER ASSEMBLY

Description	Depth		Elev.		Length
	From - To	/ From - To			
K-packer	362'		6580'		
Screen	368'	382'	6574'	6560'	14'
Screen	400'	426'	6542'	6516'	26'*
Screen	437'	453'	6505'	6489'	16'

SCREEN SPECIFICATIONS:

Slot: 0.020" Composition 3" PVC

FILTER PACKING:

Volume: _____ (bags)(ft³) Sand Specs. _____

Method: N/A

WELL STIMULATION: Method Airlift

Yield: Good / Moderate / Poor

* Worked-over 9/20/10:

New Completion Interval: 415'-426'

M-104