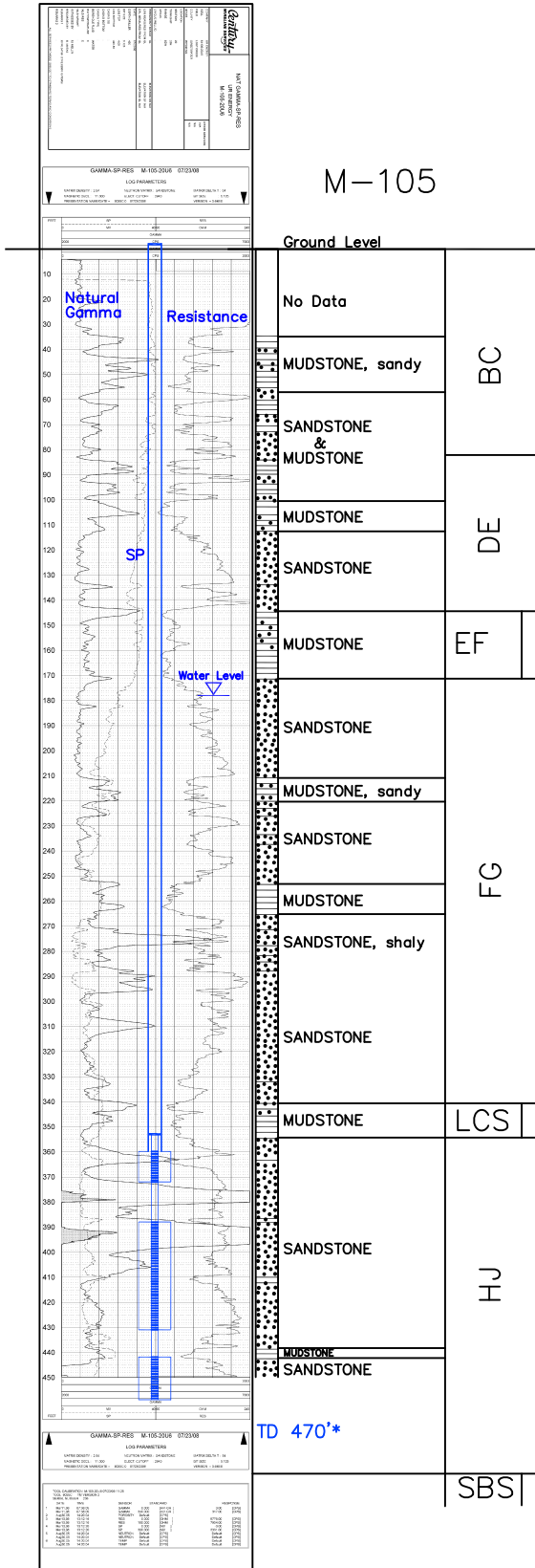


M-105

Lost Creek ISR, LLC

WELL COMPLETION REPORT

M-105



WELL # M-105 SEO # 187652 Date Drilled: 7/23/08

Location: E 2,213,052 / N 594,631 (NAD 83)

Ground Elev: 6933.2' Measure Point Elev: 6933.45'

TD: 470'* Hole Dia.: 7-7/8"

CASED to: 360' Casing: PVC SDR17 ID: 4.5" OD: 5"

GROUT: Portland Cement - Type I/II
 Pumped thru casing, displaced to surface with water

COMPLETION Aquifer: UHJ, MHJ, LHJ* Sands

Static Water Level: Depth 178' Elev: 6755' (avg.)

UNDERREAM: Blade Dia: 10.5"

Intervals: from 360' to 372' / length 12'

from 388' to 431' / length 43'

from 442' to 459' / length 17'*

SCREEN LINER ASSEMBLY

Description	Depth		Elev.		Length
	From	To	From	To	
K-packer	353'		6580'		
Screen	360'	372'	6573'	6561'	12'
Screen	388'	431'	6545'	6502'	43'
Screen	442'	459'	6491'	6474'	17'*

SCREEN SPECIFICATIONS:

Slot: 0.020" Composition 3" PVC

FILTER PACKING:

Volume: _____ (bags)(ft³) Sand Specs. _____

Method: N/A

WELL STIMULATION: Method Airlift

Yield: Good / Moderate / Poor

M-105

* Worked-over 9/21/10:

Deepened 450'-470'

New Completion Interval: 442'-459'