

M-106

Lost Creek ISR, LLC

WELL COMPLETION REPORT

M-106

WELL # M-106 SEO # 187652 Date Drilled: 7/24/08

Location: E 2,212,578 / N 594,746 (NAD 83)

Ground Elev: 6922.6' Measure Point Elev: 6922.85'

TD: 470'* Hole Dia.: 7-7/8"

CASED to: 356' Casing: PVC SDR17 ID: 4.5" OD: 5"

GROUT: Portland Cement - Type I/II
Pumped thru casing, displaced to surface with water

COMPLETION Aquifer: UHJ, MHJ, LHJ* Sands

Static Water Level: Depth 169' Elev: 6954' (avg.)

UNDERREAM: Blade Dia: 10.5"

Intervals: from 356' to 401' / length 45'

from 414' to 430' / length 16'*

from 440' to 459' / length 19'*

SCREEN LINER ASSEMBLY

Description	Depth		Elev.		Length
	From	To	From	To	
K-packer	349'		6574'		
Screen	356'	401'	6567'	6522'	45'
Screen	414'	430'	6509	6493'	16'*
Screen	440'	459'	6483'	6464'	19'*

SCREEN SPECIFICATIONS:

Slot: 0.020" Composition 3" PVC

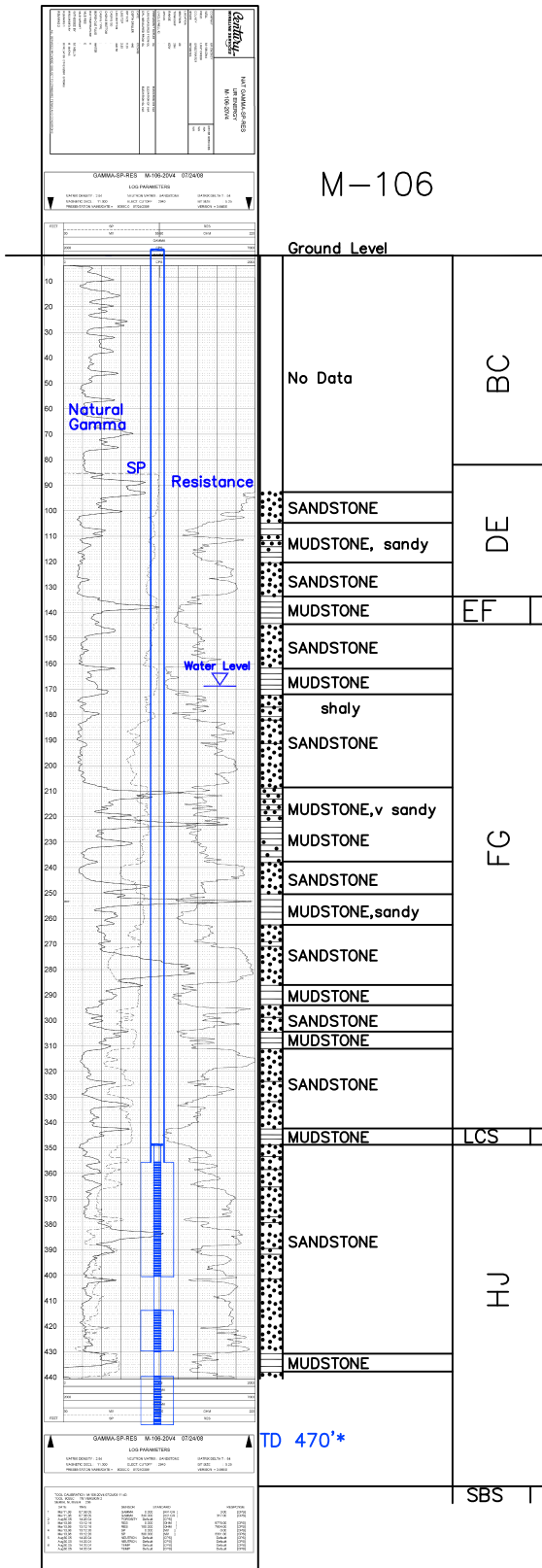
FILTER PACKING:

Volume: _____ (bags)(ft³) Sand Specs. _____

Method: N/A

WELL STIMULATION: Method Airlift

Yield: Good / Moderate / Poor



M-106

* Worked-over 9/22/10:

Deepened 440'-470'

New Completion Intervals: 414'-430'

440'-459'