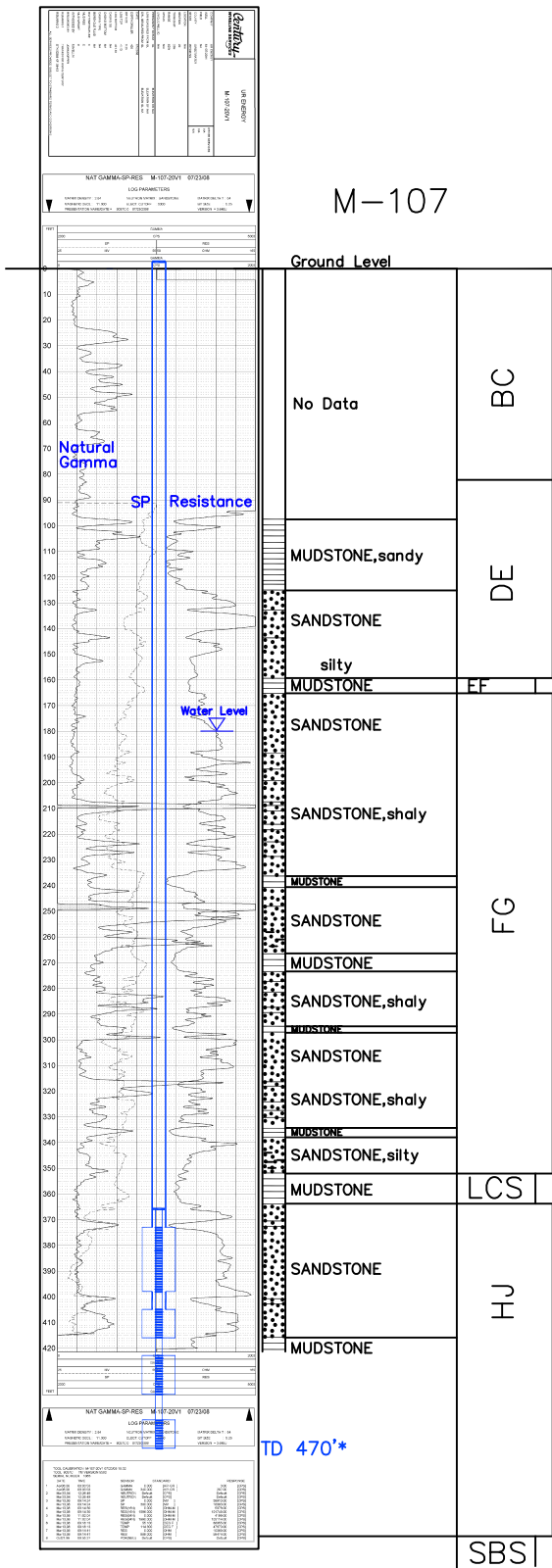


M-107

Lost Creek ISR, LLC
WELL COMPLETION REPORT

M-107



WELL # M-107 SEO # 187652 Date Drilled: 7/24/08

Location: E 2,212,095 / N 594,681 (NAD 83)

Ground Elev: 6927.6' Measure Point Elev: 6927.93'

TD: 470'* Hole Dia.: 7-7/8"

CASED to: 405' Casing: PVC SDR17 ID: 4.5" OD: 5"

GROUT: Portland Cement - Type I/II
Pumped thru casing, displaced to surface with water

COMPLETION Aquifer: UHJ, MHJ*, LHJ* Sands

Static Water Level: Depth 180' Elev: 6748' (avg.)

UNDERREAM: Blade Dia: 10.5"

Intervals: from 373' to 398' / length 25'

from 405' to 416' / length 11'*

from 423' to 438' / length 15'*

from 448' to 459' / length 11'*

SCREEN LINER ASSEMBLY

Description	Depth		Elev.		Length
	From - To	/ From - To	From - To		
K-packer	366'		6562'		
Screen	373	398'	6555'	6530'	25'
Screen	405'	416'	6523'	6512'	11'*
Screen	423'	438'	6505'	6490'	15'*
Screen	448'	459'	6480'	6469'	11'*

SCREEN SPECIFICATIONS:

Slot: 0.020" Composition 3" PVC

FILTER PACKING:

Volume: (bags)(ft³) Sand Specs.

Method: N/A

WELL STIMULATION: Method Airlift

Yield: Good / Moderate / Poor

M-107

* Worked-over 10/4/10:

Deepened 420'-470'

New Completion Intervals: 405'-416'

423'-438'

448'-459'