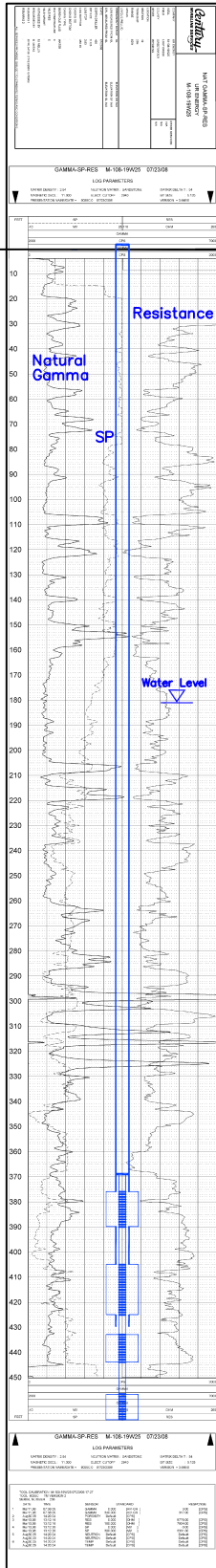


M-108

Lost Creek ISR, LLC WELL COMPLETION REPORT



M-108

WELL # M-108 SEO # 187653 Date Drilled: 7/23/08

Location: E 2,211,634 / N 594,854 (NAD 83)

Ground Elev: 6926.7' Measure Point Elev: 6927.87'

TD: 475'* Hole Dia.: 7-7/8"

CASED to: 430' Casing: PVC SDR17 ID: 4.5" OD: 5"

GROUT: Portland Cement - Type I/II
Pumped thru casing, displaced to surface with water

COMPLETION Aquifer: UHJ*, MHJ, LHJ* Sands
Static Water Level: Depth 181' Elev: 6746' (avg.)

UNDERREAM: Blade Dia: 10.5"
Intervals: from 376' to 390' / length 14'*
from 405' to 425' / length 20'
from 433' to 444' / length 11'*
from 457' to 467' / length 10'*

SCREEN LINER ASSEMBLY

| Description | Depth | | Elev. | | Length |
|-------------|-------|------|-------|-------|--------|
| | From | To | From | To | |
| K-packer | 369' | | 6558' | | |
| Screen | 376' | 390' | 6551' | 6537' | 14'* |
| Screen | 405' | 425' | 6522' | 6502' | 20' |
| Screen | 433' | 444' | 6494' | 6483' | 11'* |
| Screen | 457' | 467' | 6470' | 6460' | 10'* |

SCREEN SPECIFICATIONS:

Slot: 0.020" Composition 3" PVC

FILTER PACKING:

Volume: _____ (bags)(ft³) Sand Specs. _____

Method: N/A

WELL STIMULATION: Method Airlift

Yield: Good / Moderate / Poor

* Worked-over 10/5/10:

Deepened 450'-475'

New Completion Intervals: 376'-390''

433'-444'

457'-467'

M-108